

additional services...

We also offer specialist advice, information and assistance to professional colleagues and voluntary agencies. As well as developing our own initiatives, we are always interested to hear other ideas.

how to contact us...

Referrals usually come from school doctors, teachers, area team social workers, GP's, Child Development Centre Staff, Child & Family Nurses or other people working professionally with children who have a disability. Parents can also contact us directly, and their consent is always needed before a referral can be made.

Please send referrals to:

Children's Disability Team, Douglas House
18 Trumpington Street, Cambridge CB2 2AH

Tel: 01223 568808

Fax: 01223 568815

For further information, or to informally discuss a referral, please telephone between 9am and 12.30pm, Monday to Friday.

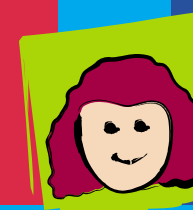
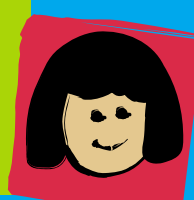
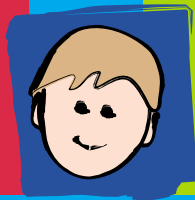
the area we cover...



If you have any comments, suggestions or complaints about the Children's Disability Team, please contact the Team Co-ordinator.

children's disability team





Who we are...

The Children's Disability Team is a joint enterprise between **Cambridge and Peterborough Mental Health Trust** and **Cambridgeshire Social Services Department**.

The team offers an inter-disciplinary approach to working with children with disabilities. It provides a home-based service, working in partnership with school age children and their families. The child may have learning, physical or sensory disabilities, often of a complex nature.

In supporting children and their families, the team works in close co-operation with other agencies – Child Development Centre, the School Health Service, Education Service, Social Services, Brookside Family Consultation Clinic, respite care providers and voluntary organisations.

the team...

- clinical psychologist
- community nurses – learning disabilities
- consultant paediatrician
- consultant psychiatrist
- social workers
- support workers
- admin support

Children referred to us are visited at home by one or two members of the team. We undertake an assessment and identify the needs of the child and his, or her, family.



services we can offer...

Specialist advice, help and support to carers on a range of issues associated with disabilities, including:

- psychological support for the family
- managing difficult behaviours associated with disabilities
- teaching and developing appropriate social behaviours
- arranging and co-ordinating specialist services for children with complex needs; severe physical, learning and sensory disabilities
- encouraging integration where appropriate
- counselling
- teaching and developing self-help skills; continence, personal hygiene, dressing and feeding
- arranging respite care, primarily at home
- assessing the health and social needs of children and their carers
- opportunities for children and parents to express their needs
- information on disability services: support groups • welfare benefits • holiday activities access to voluntary organisations • recreation and equipment