

SECONDARY AGE PUPILS IN CAMBRIDGESHIRE: 2008/2009 school year

STUDENT DESTINATIONS AT 16+

Destinations of Y11 Leavers from Cambridgeshire LA Schools

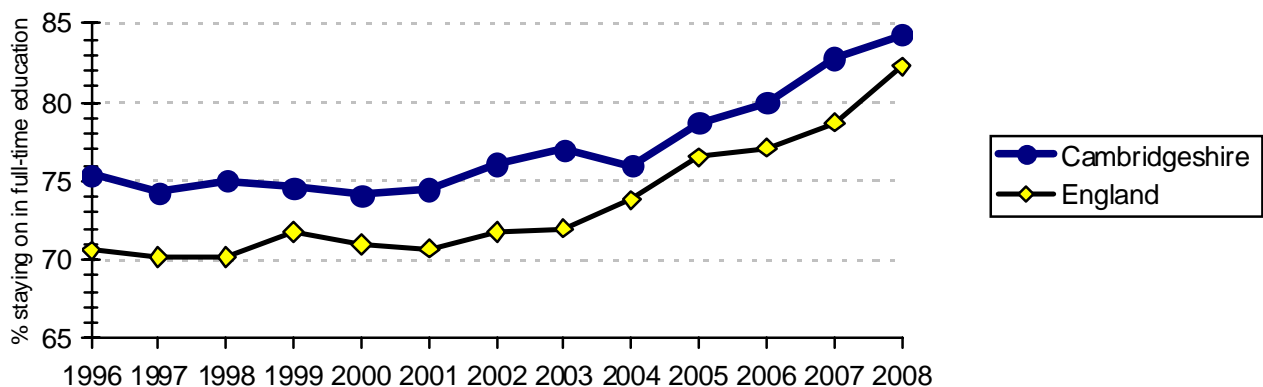
The chart shows the destinations of young people leaving secondary, special schools or PRUs at age 16 in Summer 2009. 94.5% were known to be continuing in education, employment or training.

Destinations: Summer 2009	% Pupils
Stayed on in full-time education in Cambridgeshire (<i>includes schools, FE colleges and 6th form colleges</i>)	88.7
Entered employment and training:	3.9
Of which: Employed with training	3.2
Employed without training	0.7
Full-time training (non-employed)	1.4
Voluntary & part-time activities	0.6
Known to be in Education, Employment or Training (EET)	94.5
Actively seeking education, employment or training	2.8
Not available for work	0.4
Known not to be in Education, Employment or Training (NEET)	3.2
Not known/Moved out of area	2.3

Data Source: Connexions

% 16+ age group staying on in full-time education: recent trends

The proportion of young people in Cambridgeshire who stay on in full-time education at age 16+ is above the national average.



Destination patterns – particularly the proportion of young people staying on in full-time education - varies across Cambridgeshire. The rates are highest in South Cambridgeshire and lowest in Fenland.

SECONDARY AGE PUPILS IN CAMBRIDGESHIRE: 2008/2009 school year

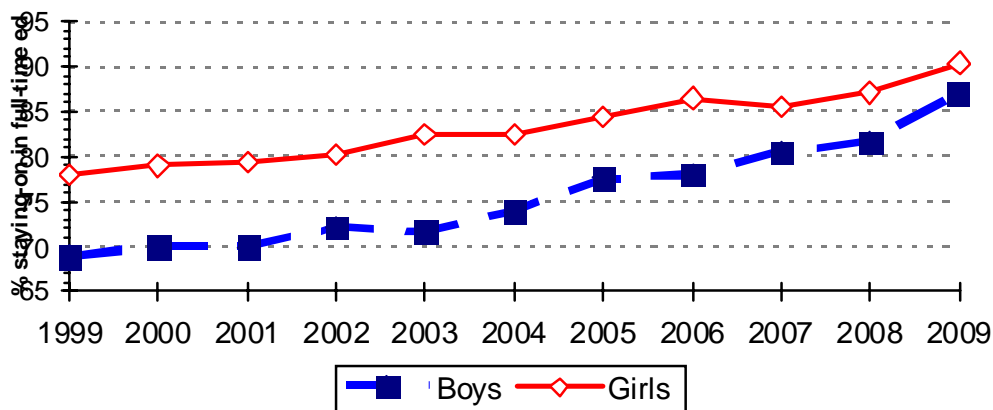
The percentage of students in Cambridgeshire Secondary Schools staying-on in full-time education at 16+

	2003/04	2004/05	2005/06	2006/07	2007/08	2008/09
Cambridge City	80.5	83.8	85.0	87.3	84.2	89.7
East Cambridgeshire	75.7	79.1	82.0	82.7	87.8	89.4
Fenland	68.9	73.5	75.3	75.3	83.3	87.6
Huntingdonshire	80.1	81.7	80.4	82.3	85.0	90.9
South Cambridgeshire	81.5	84.3	88.9	89.5	89.5	93.4
Cambridgeshire	78.2	81.0	82.7	83.8	81.5	90.6

Data Source: Connexions

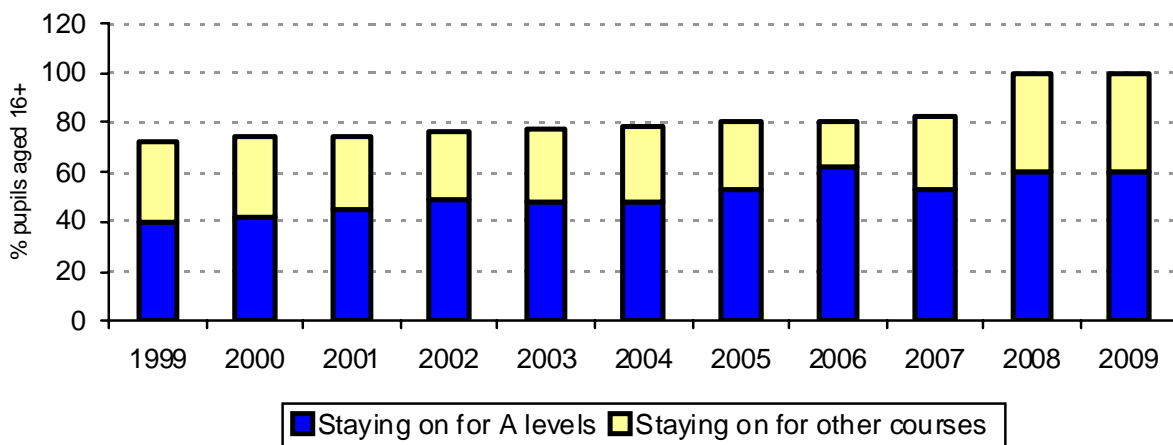
There is a difference in the stay-on rates for boys and girls. More girls than boys stay on in full-time education, 90.4% girls compared with 87.1% boys

The percentage of boys & girls from Cambridgeshire Secondary Schools staying-on in full-time education at 16+



Data Source: Connexions

The majority of Post-16 enrolments on full-time education courses are for A / AS examinations.



SECONDARY AGE PUPILS IN CAMBRIDGESHIRE: 2008/2009 school year

Enrolments on full-time Post-16 courses by Summer 2009 Leavers

	% boys	% girls	% all pupils
A, AS or A2 courses	49.2	56.7	52.9
NVQ Level 3 or equivalent	9.2	10.9	10.0
NVQ Level 2 or equivalent	15.0	13.2	14.1
NVQ Level 1 or equivalent	9.3	6.3	7.8
GCSE courses	1.4	1.5	1.5
Other full-time courses	2.9	1.7	2.3
Stayed on in full-time education (<i>includes schools, FE colleges and 6th form colleges</i>)	87.1	90.4	88.7

Data Source: Connexions