

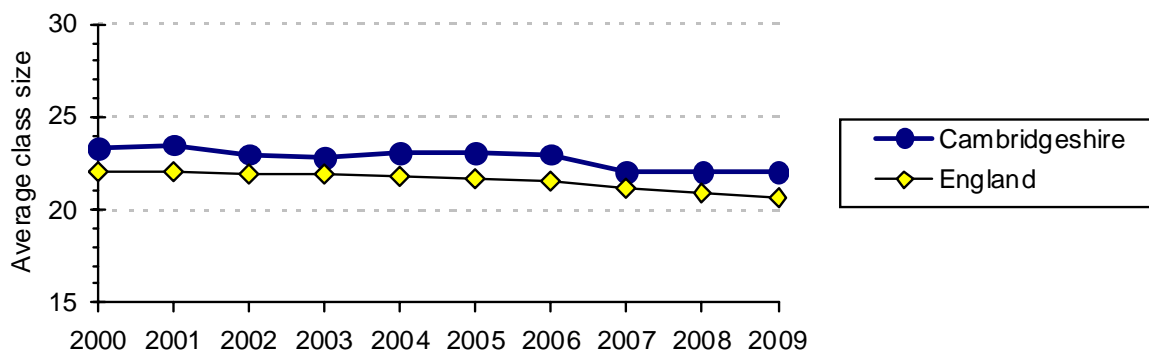
SECONDARY AGE PUPILS IN CAMBRIDGESHIRE: 2008/2009 school year

CLASS SIZES

The average class size is calculated by dividing the number of pupils being taught at the time of the Annual School Census each January by the number of classes at the same time.

AVERAGE SIZE OF SECONDARY CLASSES

In January 2009 the average secondary class in Cambridgeshire had 22 pupils, compared with the national average of 20.6. In recent years the average size of secondary classes in Cambridgeshire has remained consistently above the national average. (Comparisons are based on classes with one teacher)



SECONDARY PUPILS IN CLASSES OF OVER 30

The percentage of secondary school pupils in classes of over 30 pupils in Cambridgeshire is consistently above the national average. In January 2009 15.1% of secondary pupils in Cambridgeshire were in classes of over 30, compared with the national average of 10.3%.

