

# Do you qualify for help?

## Post-16 education transport in Cambridgeshire

A guide and application form for students  
for the academic year 2011/2012

Please complete the form in CAPITAL LETTERS and return to:

Social and Education Transport Team  
Cambridgeshire County Council  
Box Number CC1301  
Castle Court  
Shire Hall  
Cambridge  
CB3 0AP

# The purpose of this booklet

## **Post-16 transport support is discretionary.**

The purpose of this booklet is to explain, therefore

- the circumstances in which the Cambridgeshire County Council, the Local Children's Services Authority (LA) will provide assistance with transport
- the circumstances in which the LA will provide free transport
- how to apply

This booklet also contains a village list to offer assistance in determining the nearest appropriate post-16 centre to your home address. Please note however, this list is intended to act as a guide only. All transport applications will be determined on the individual circumstances including the course applied for, distance from home address to the post-16 centre and the availability of a route. You are advised to check with the LA regarding the transport implications of your choice of centre by emailing: [post16transport@cambridgeshire.gov.uk](mailto:post16transport@cambridgeshire.gov.uk) or by phone: 01223 699790.

# 1 Do I qualify for assistance with post-16 education transport costs?

Under Cambridgeshire County Council's transport policy eligibility for transport support for post-16 students is based upon the student attending the nearest appropriate post-16 centre to their home address.

For the academic year 2011 / 2012 the LA can help you with transport costs if you are

- a. Resident within the area where Cambridgeshire County Council is the LA. You are resident within the Cambridgeshire LA area if you pay your council tax to one of the following district councils: Cambridge City, East Cambridgeshire, Fenland, Huntingdonshire or South Cambridgeshire.
- b. Attending your nearest appropriate post-16 centre (see section 2), either in a school or college of further education as a direct continuation of your 11-16 education.
- c. Enrolled on a full-time course with a minimum of 15 taught hours per week.
- d. Over compulsory school age but under 19 on 31 August 2011. If you are a student with special educational needs you must be under 25 on 31 August 2011 and should contact the STAR Team on 01480 372620 or 372707 for more information.
- e. Resident at an address which is three miles or more from your nearest appropriate post-16 centre measured by the shortest available walking route.
- f. Able to complete the single journey within 90 minutes travel time.

Please note a full copy of Cambridgeshire County Council's Home to School / College Transport Policy can be viewed on our website at

**[www.cambridgeshire.gov.uk/education/parents/getting/transportpolicy](http://www.cambridgeshire.gov.uk/education/parents/getting/transportpolicy)**

## 2 What is my nearest appropriate post-16 centre?

### 2.1 The nearest appropriate post-16 centre: definition

The nearest appropriate post-16 centre is defined as the school or college that

- regardless of county boundaries is nearest to the student's family home
- and / or where appropriate, named by the LA as the school / college catchment for the student's family address
- and offers the main essentials of the course required by the student, both in terms of type and level with regard to higher education and / or careers outcomes

### 2.2 Determining your nearest appropriate post-16 centre

To help you determine whether your chosen centre is also your nearest appropriate post-16 centre please refer to the village list (see section 2.5) and the flow charts (see section 2.6).

### 2.3 If you choose not to attend the nearest appropriate post-16 centre

If you choose to attend a centre other than your nearest appropriate post-16 centre you will be responsible for your transport arrangements and costs. You may be able to purchase a seat on one of the County Council's contracted vehicles.

### 2.4 Other information

- a. If there are specific reasons for your choice of subjects (for instance career or higher education aspirations) please include these on the application form using the space provided, or attach a separate sheet. Failure to do so may delay your application being processed.
- b. If the nearest appropriate centre does not offer a particular subject, subject mix (for example at A-Level) or a particular range of module options, it is highly unlikely that assistance with transport will be provided to a more distant centre. (See flow chart in section 2.6 for further information).
- c. The LA will seek advice from a Connexions Adviser to help determine students' eligibility for assistance with transport costs where we find this advice to be necessary.

Please note if you have applied to and been refused a place at your nearest appropriate centre and are therefore applying for a more distant centre you must include your refusal letter.

### 2.5 Village List

The following village list offers assistance in determining the nearest appropriate post-16 centre to your home address. Please note, however, this list is intended to act as a guide only. All transport applications will be determined on the individual circumstances including the course applied for, distance from home address to the post-16 centre and the availability of a route. You are advised to check with the LA regarding the transport implications of your choice of centre by emailing: [post16transport@cambridgeshire.gov.uk](mailto:post16transport@cambridgeshire.gov.uk) or by phone: 01223 699790.

Please note that students studying the International Baccalaureate will be entitled to transport support to Parkside Community College or Impington Village College provided they meet the transport eligibility criteria (see sections 1 and 2) and there is an existing transport route (contracted or public service) and the single journey can be achieved within the 90 minutes maximum travelling time as set out in the LA's transport policy.

Town/Village	As/A2 Level Base	Qualify for assistance	Ticket type	Vocational Base	Qualify for assistance	Ticket type
<b>Abbots Ripton</b>	St Peters School	Yes	Standard	Huntingdon Regional College	Yes	Standard
<b>Abbotsley</b>	St Neots CC	Yes	Standard	Huntingdon Regional College	Yes	Standard
<b>Abington Pigots</b>	Long Road/Hills Road	Yes	Goldrider	Cambridge Regional College	Yes	Goldrider
	Netherhall	Yes	Goldrider	Long Road Sixth Form	Yes	Goldrider
	Meridian (Royston)	Yes	Standard	The Parkside Federation COWA, Milton	Yes Yes	Goldrider Goldrider
<b>Alconbury</b>	Sawtry CC	Yes	Standard	Huntingdon Regional College	Yes	Goldrider
<b>Alconbury Weston</b>	Sawtry CC	Yes	Standard	Huntingdon Regional College	Yes	Goldrider
<b>Aldreth</b>	City of Ely CC	Yes	Goldrider	Cambridge Regional College	Yes	Goldrider
<b>Allington Hill</b>	Long Road/Hills Road	Yes	Goldrider	Cambridge Regional College	Yes	Goldrider
	Netherhall	Yes	Goldrider	Long Road Sixth Form	Yes	Goldrider
				The Parkside Federation	Yes	Goldrider
				COWA, Milton	Yes	Goldrider
<b>Alwalton</b>	Refer to Ed Transport	–	–	Refer to Ed Transport	–	–
<b>Arrington</b>	Long Road/Hills Road	Yes	Standard	Cambridge Regional College	Yes	Goldrider
	Comberton VC	Yes	Goldrider	Long Road Sixth Form	Yes	Standard
	Netherhall	Yes	Goldrider	The Parkside Federation	Yes	Standard
				COWA, Milton	Yes	Goldrider
<b>Ashley</b>	Long Road/Hills Road	Yes	Goldrider	Cambridge Regional College	Yes	Goldrider
	Netherhall	Yes	Goldrider	Long Road Sixth Form	Yes	Goldrider
	Newmarket	Yes	Standard	The Parkside Federation	Yes	Goldrider
	College			COWA, Milton	Yes	Goldrider
<b>Ashwell</b>	Contact Herfordshire CC	N/A	N/A	Contact Herfordshire CC	N/A	N/A
<b>Babraham</b>	Long Road/Hills Road	Yes	Goldrider	Cambridge Regional College	Yes	Goldrider
	Netherhall	Yes	Goldrider	Long Road Sixth Form	Yes	Goldrider
	Impington VC	Yes	Goldrider	The Parkside Federation	Yes	Goldrider
				COWA, Milton	Yes	Goldrider
<b>Balsham</b>	Long Road/Hills Road	Yes	Goldrider	Cambridge Regional College	Yes	Goldrider
	Netherhall	Yes	Goldrider	Long Road Sixth Form	Yes	Goldrider
	Impington VC	Yes	Goldrider	The Parkside Federation	Yes	Goldrider
				COWA, Milton	Yes	Goldrider
<b>Bar Hill</b>	Long Road/Hills Road	Yes	Other	Cambridge Regional College	Yes	Other
	Netherhall	Yes	Other	Long Road Sixth Form	Yes	Other
	Impington VC	Yes	Other	The Parkside Federation	Yes	Other
				COWA, Milton	Yes	Other
<b>Barcham</b>	City of Ely CC	Yes	Standard	Cambridge Regional College	Yes	Goldrider
<b>Barham</b>	Hinchingsbrooke	Yes	Standard	Huntingdon Regional College	Yes	Standard
<b>Barkway</b>	Contact Herfordshire CC	N/A	N/A	Contact Herfordshire CC	N/A	N/A
<b>Barrington</b>	Long Road/Hills Road	Yes	GR or St	Cambridge Regional College	Yes	Goldrider
	Netherhall	Yes	Goldrider	Long Road Sixth Form	Yes	GR or St
				The Parkside Federation	Yes	Goldrider
				COWA, Milton	Yes	Goldrider
<b>Bartlow</b>	Long Road/Hills Road	Yes	Goldrider	Cambridge Regional College	Yes	Goldrider
	Netherhall	Yes	Goldrider	Long Road Sixth Form	Yes	Goldrider
	Impington VC	Yes	Goldrider	The Parkside Federation	Yes	Goldrider
				COWA, Milton	Yes	Goldrider
<b>Barton</b>	Long Road/Hills Road	Yes	Other	Cambridge Regional College	Yes	Other
	Comberton VC	Split	Other or	Long Road Sixth Form	Yes	Other
	Netherhall	Yes	St Other	The Parkside Federation	Yes	Other
				COWA, Milton	Yes	Other
<b>Barway</b>	City of Ely CC	Yes	Standard	Cambridge Regional College	Contact CRC directly	

Town/Village	As/A2 Level Base	Qualify for assistance	Ticket type	Vocational Base	Qualify for assistance	Ticket type
<b>Bassingbourn</b>	Long Road/Hills Road Netherhall Meridian (Royston)	Yes Yes Yes	Goldrider Goldrider Standard	Cambridge Regional College Long Road Sixth Form The Parkside Federation COWA, Milton	Yes Yes Yes Yes	Goldrider Goldrider Goldrider Goldrider
<b>Benwick</b>	Cromwell CC Abbey College Neale Wade CC	Yes Yes Yes	Standard Standard Standard	Huntingdon Regional College Peterborough Regional College	Yes Yes	Standard Standard
<b>Black Horse Drove</b>	City of Ely CC	Yes	Standard	COWA Isle	Yes	Standard
<b>Bluntisham</b>	Abbey College / St Ivo	Yes	Standard	Huntingdon Regional College	Yes	Goldrider
<b>Bottisham</b>	Long Road/Hills Road Netherhall Newmarket College	Yes Yes Yes	Goldrider Goldrider Goldrider	Cambridge Regional College Long Road Sixth Form The Parkside Federation COWA, Milton	Yes Yes Yes Yes	Goldrider Goldrider Goldrider Goldrider
<b>Bourn</b>	Long Road/Hills Road Netherhall Comberton VC	Yes Yes Yes	Other Other Standard	Cambridge Regional College Long Road Sixth Form The Parkside Federation COWA, Milton	Yes Yes Yes Yes	Other Other Other Other
<b>Boxworth</b>	Long Road/Hills Road Impington VC Netherhall	Yes Yes Yes	Standard Standard Standard	Cambridge Regional College Long Road Sixth Form The Parkside Federation COWA, Milton	Yes Yes Yes Yes	Standard Standard Standard Standard
<b>Brampton</b>	Hinchingbrooke	No	–	Huntingdon Regional College	No	–
<b>Brington</b>	Hinchingbrooke	Yes	Standard	Huntingdon Regional College	Yes	Goldrider
<b>Brinkley</b>	Long Road/Hills Road Netherhall Impington VC	Yes Yes Yes	Goldrider Goldrider Goldrider	Cambridge Regional College Long Road Sixth Form The Parkside Federation COWA, Milton	Yes Yes Yes Yes	Goldrider Goldrider Goldrider Goldrider
<b>Broad Green</b>	Long Road/Hills Road Netherhall Newmarket College	Yes Yes Yes	Goldrider Goldrider Standard	Cambridge Regional College Long Road Sixth Form The Parkside Federation COWA, Milton	Yes Yes Yes Yes	Goldrider Goldrider Goldrider Goldrider
<b>Broughton</b>	St Peters School	Yes	Standard	Huntingdon Regional College	Yes	Standard
<b>Buckden</b>	Hinchingbrooke	Yes	Standard	Huntingdon Regional College	Yes	Goldrider
<b>Buckworth</b>	Sawtry CC	Yes	Standard	Huntingdon Regional College	Yes	Standard
<b>Burrough Green</b>	Long Road/Hills Road Netherhall Impington VC	Yes Yes Yes	Goldrider Goldrider Goldrider	Cambridge Regional College Long Road Sixth Form The Parkside Federation COWA, Milton	Yes Yes Yes Yes	Goldrider Goldrider Goldrider Goldrider
<b>Burwell</b>	Long Road/Hills Road Netherhall Newmarket College City of Ely CC	Yes Yes Yes Yes	Goldrider Goldrider Goldrider Standard	Cambridge Regional College Long Road Sixth Form The Parkside Federation COWA, Milton	Yes Yes Yes Yes	Goldrider Goldrider Goldrider Goldrider
<b>Bury</b>	Abbey College	No	–	Huntingdon Regional College	Yes	Goldrider
<b>Bythorn</b>	Hinchingbrooke	Yes	Standard	Huntingdon Regional College	Yes	Standard
<b>Caldecote</b>	Long Road/Hills Road Impington VC Comberton VC	Yes Yes Yes	Other Other Standard	Cambridge Regional College Long Road Sixth Form The Parkside Federation COWA, Milton	Yes Yes Yes Yes	Other Other Other Other
<b>Camborne</b>	Long Road/Hills Road Impington VC Comberton VC	Yes Yes Yes	Other Other Standard	Cambridge Regional College Long Road Sixth Form The Parkside Federation COWA, Milton	Yes Yes Yes Yes	Other Other Other Other

Town/Village	As/A2 Level Base	Qualify for assistance	Ticket type	Vocational Base	Qualify for assistance	Ticket type
<b>Cambridge City</b>	Long Road/Hills Road Impington VC Netherhall	Split Split Split	Other Other Other	Cambridge Regional College Long Road Sixth Form The Parkside Federation COWA, Milton	Split Split Split Split	Other Other Other Other
<b>Camps End</b>	Long Road/Hills Road Netherhall Impington VC	Yes Yes Yes	Goldrider Goldrider Goldrider	Cambridge Regional College Long Road Sixth Form The Parkside Federation COWA, Milton	Yes Yes Yes Yes	Goldrider Goldrider Goldrider Goldrider
<b>Cardinals Green</b>	Long Road/Hills Road Netherhall Haverhill	Yes Yes Yes	Goldrider Goldrider Goldrider	Cambridge Regional College Long Road Sixth Form The Parkside Federation COWA, Milton	Yes Yes Yes Yes	Goldrider Goldrider Goldrider Goldrider
<b>Carlton</b>	Long Road/Hills Road Netherhall Newmarket College	Yes Yes Yes	Goldrider Goldrider Standard	Cambridge Regional College Long Road Sixth Form The Parkside Federation COWA, Milton	Yes Yes Yes Yes	Goldrider Goldrider Goldrider Goldrider
<b>Castle Camps</b>	Long Road/Hills Road Netherhall Impington VC	Yes Yes Yes	Goldrider Goldrider Goldrider	Cambridge Regional College Long Road Sixth Form The Parkside Federation COWA, Milton	Yes Yes Yes Yes	Goldrider Goldrider Goldrider Goldrider
<b>Catworth</b>	Hinchingsbrooke	Yes	Standard	Huntingdon Regional College	Yes	Goldrider
<b>Caxton</b>	Long Road/Hills Road Comberton VC Netherhall	Yes Yes Yes	Goldrider Standard Goldrider	Cambridge Regional College Long Road Sixth Form The Parkside Federation COWA, Milton	Yes Yes Yes Yes	Goldrider Goldrider Goldrider Goldrider
<b>Chatteris</b>	Cromwell CC Neale Wade CC	No Yes	– Standard	Huntingdon Regional College COWA Isle	Yes Yes	Goldrider Standard
<b>Chesterton (P'Boro)</b>	Orton Longueville School	No	–	Peterborough Regional College	Contact PRC directly	
<b>Chettisham</b>	City of Ely CC	No	–	Cambridge Regional College	Yes	Goldrider
<b>Cheveley</b>	Long Road/Hills Road Impington VC Newmarket College	Yes Yes Yes	Goldrider Goldrider Goldrider	Cambridge Regional College Long Road Sixth Form The Parkside Federation COWA, Milton	Yes Yes Yes Yes	Goldrider Goldrider Goldrider Goldrider
<b>Cheveley Pr Stud</b>	Long Road/Hills Road Impington VC Newmarket College	Yes Yes Yes	Goldrider Goldrider Goldrider	Cambridge Regional College Long Road Sixth Form The Parkside Federation COWA, Milton	Yes Yes Yes Yes	Goldrider Goldrider Goldrider Goldrider
<b>Childerley</b>	Long Road/Hills Road Impington VC Comberton VC	Yes Yes Yes	Other Other Standard	Cambridge Regional College Long Road Sixth Form The Parkside Federation COWA, Milton	Yes Yes Yes Yes	Other Other Other Other
<b>Chippenham</b>	City of Ely CC	Yes	Standard	Cambridge Regional College	Yes	Goldrider
<b>Chittering</b>	Long Road/Hills Road Netherhall Impington VC	Yes Yes Yes	Goldrider Goldrider Goldrider	Cambridge Regional College Long Road Sixth Form The Parkside Federation COWA, Milton	Yes Yes Yes Yes	Goldrider Goldrider Goldrider Goldrider
<b>Chrishall</b>	Contact Essex CC	N/A	N/A	Contact Essex CC	N/A	N/A
<b>Chrishall Grange</b>	Long Road/Hills Road Netherhall Meridian (Royston)	Yes Yes Yes	Standard Standard Standard	Cambridge Regional College Long Road Sixth Form The Parkside Federation COWA, Milton	Yes Yes Yes Yes	Standard Standard Standard Standard

Town/Village	As/A2 Level Base	Qualify for assistance	Ticket type	Vocational Base	Qualify for assistance	Ticket type
<b>Christchurch</b>	Neale Wade CC	Yes	Standard	COWA Isle	Yes	Standard
<b>Clayhithe</b>	Long Road/Hills Road Netherhall Impington VC	Yes Yes Yes	Goldrider Goldrider Goldrider	Cambridge Regional College Long Road Sixth Form The Parkside Federation COWA, Milton	Yes Yes Yes Yes	Goldrider Goldrider Goldrider Goldrider
<b>Coates</b>	Sir Harry Smith CC	No	–	Peterborough Regional College	Yes	Standard
<b>Coldham</b>	Neale Wade CC	Yes	Standard	COWA Isle	Yes	Standard
<b>Colne</b>	Abbey College / St Ivo	Yes	Standard	Huntingdon Regional College	Yes	Goldrider
<b>Comberton</b>	Long Road/Hills Road Comberton VC Netherhall	Yes No Yes	Other – Other	Cambridge Regional College Long Road Sixth Form The Parkside Federation COWA, Milton	Yes Yes Yes Yes	Other Other Other Other
<b>Conington</b>	Long Road/Hills Road Netherhall Impington VC	Yes Yes Yes	Standard Standard Standard	Cambridge Regional College Long Road Sixth Form The Parkside Federation COWA, Milton	Yes Yes Yes Yes	Standard Standard Standard Standard
<b>Conington (Hunt)</b>	Sawtry CC	Yes	Standard	Refer to Education Transport	–	–
<b>Coppingford</b>	Sawtry CC	Yes	Standard	Huntingdon Regional College	Yes	Standard
<b>Coton</b>	Long Road/Hills Road Comberton VC Netherhall	Yes Yes Yes	Other Standard Other	Cambridge Regional College Long Road Sixth Form The Parkside Federation COWA, Milton	Yes Yes Yes Yes	Other Other Other Other
<b>Cottenham</b>	Long Road/Hills Road Netherhall Impington VC	Yes Yes Split	Goldrider Goldrider Goldrider	Cambridge Regional College Long Road Sixth Form The Parkside Federation COWA, Milton	Yes Yes Yes Yes	Goldrider Goldrider Goldrider Goldrider
<b>Coveney</b>	City of Ely CC	Yes	Standard	Cambridge Regional College	Yes	Goldrider
<b>Covington</b>	Longsands CC	Yes	Standard	Huntingdon Regional College	Yes	Standard
<b>Crockfords Park</b>	Newmarket College	No	–	Cambridge Regional College	Yes	Goldrider
<b>Croxton</b>	Longsands CC	Yes	Standard	Huntingdon Regional College	Yes	Standard
<b>Croydon (Royston)</b>	Long Road/Hills Road Netherhall Impington VC	Yes Yes Yes	Standard Standard Standard	Cambridge Regional College Long Road Sixth Form The Parkside Federation COWA, Milton	Yes Yes Yes Yes	Standard Standard Standard Standard
<b>Dalham</b>	Contact Suffolk CC	N/A	N/A	Contact Suffolk CC	N/A	N/A
<b>Dalham Stud</b>	Long Road/Hills Road Impington VC Newmarket College	Yes Yes Yes	Goldrider Goldrider Goldrider	Cambridge Regional College Long Road Sixth Form The Parkside Federation COWA, Milton	Yes Yes Yes Yes	Goldrider Goldrider Goldrider Goldrider
<b>Denton</b>	Sawtry CC	Yes	Standard	Peterborough Regional College	Yes	Standard
<b>Diddington</b>	Hinchingbrooke	Yes	Standard	Huntingdon Regional College	Yes	Standard
<b>Dillington</b>	Longsands CC	Yes	Standard	Huntingdon Regional College	Yes	Standard
<b>Ditton Lodge</b>	Long Road/Hills Road Impington VC Newmarket College	Yes Yes No	Goldrider Goldrider –	Cambridge Regional College Long Road Sixth Form The Parkside Federation COWA, Milton	Yes Yes Yes Yes	Goldrider Goldrider Goldrider Goldrider
<b>Doddington</b>	Cromwell CC Neale Wade CC	Yes Yes	Standard Goldrider	COWA Isle	Yes	Standard

Town/Village	As/A2 Level Base	Qualify for assistance	Ticket type	Vocational Base	Qualify for assistance	Ticket type
<b>Dry Drayton</b>	Long Road/Hills Road Impington VC Netherhall	Yes Yes Yes	Goldrider Goldrider Goldrider	Cambridge Regional College Long Road Sixth Form The Parkside Federation COWA, Milton	Yes Yes Yes Yes	Goldrider Goldrider Goldrider Goldrider
<b>Dullingham</b>	Long Road/Hills Road Netherhall Newmarket College	Yes Yes Yes	Goldrider Goldrider Standard	Cambridge Regional College Long Road Sixth Form The Parkside Federation COWA, Milton	Yes Yes Yes Yes	Goldrider Goldrider Goldrider Goldrider
<b>Dullingham Ley</b>	Long Road/Hills Road Netherhall Newmarket College	Yes Yes Yes	Goldrider Goldrider Standard	Cambridge Regional College Long Road Sixth Form The Parkside Federation COWA, Milton	Yes Yes Yes Yes	Goldrider Goldrider Goldrider Goldrider
<b>Duxford</b>	Long Road/Hills Road Netherhall Impington VC	Yes Yes Yes	Goldrider Goldrider Goldrider	Cambridge Regional College Long Road Sixth Form The Parkside Federation COWA, Milton	Yes Yes Yes Yes	Goldrider Goldrider Goldrider Goldrider
<b>Duxford Camp</b>	Long Road/Hills Road Netherhall Impington VC	Yes Yes Yes	Goldrider Goldrider Goldrider	Cambridge Regional College Long Road Sixth Form The Parkside Federation COWA, Milton	Yes Yes Yes Yes	Goldrider Goldrider Goldrider Goldrider
<b>Earith</b>	Abbey College / St Ivo	Yes	Standard	Huntingdon Regional College	Yes	Goldrider
<b>East Hatley</b>	Stratton Upper School	Yes	Standard	Bedford College Huntingdon Regional College	Yes Yes	Goldrider Goldrider
<b>East Perry</b>	Longsands CC	Yes	Standard	Huntingdon Regional College	Yes	Standard
<b>Easton</b>	Hinchingbrooke	Yes	Standard	Huntingdon Regional College	Yes	Standard
<b>Eastrea</b>	Sir Harry Smith CC	No	–	Peterborough Regional College	Yes	Standard
<b>Eaton Ford</b>	Longsands CC	No	–	Bedford College Huntingdon Regional College	Yes Yes	Goldrider Standard
<b>Eaton Socon</b>	Longsands C/ St Neots CC	No	–	Bedford College Huntingdon Regional College	Yes Yes	Goldrider Standard
<b>Ellington</b>	Hinchingbrooke	Yes	Standard	Huntingdon Regional College	Yes	Goldrider
<b>Elm</b>	Refer to Ed Transport	–	–	COWA Isle	Yes	Standard
<b>Elsworth</b>	Long Road/Hills Road Netherhall Impington VC	Yes Yes Yes	Standard Standard Standard	Cambridge Regional College Long Road Sixth Form The Parkside Federation COWA, Milton	Yes Yes Yes Yes	Standard Standard Standard Standard
<b>Eltisley</b>	Longsands CC	Yes	Standard	Huntingdon Regional College	Yes	Standard
<b>Elton</b>	Orton Longueville School	Yes	Standard	Peterborough Regional College	Contact PRC directly	
<b>Ely</b>	City of Ely CC	No	–	Cambridge Regional College	Yes	Goldrider
<b>Emneth (Norfolk)</b>	Contact Norfolk CC	N/A	N/A	Contact Norfolk CC	N/A	N/A
<b>Everton</b>	Contact Norfolk CC	N/A	N/A	Contact Norfolk CC	N/A	N/A
<b>Everton Heath</b>	Stratton Upper School	Yes	Standard	Bedford College	Yes	Goldrider
<b>Exning (Suffolk)</b>	Contact Suffolk CC	N/A	N/A	Contact Suffolk CC	N/A	N/A
<b>Eynesbury</b>	St Neots CC	No	–	Bedford College Huntingdon Regional College	Yes Yes	Goldrider Standard
<b>Farcet</b>	Stanground C	No	–	Peterborough Regional College	Yes	Standard

Town/Village	As/A2 Level Base	Qualify for assistance	Ticket type	Vocational Base	Qualify for assistance	Ticket type
<b>Fen Ditton</b>	Long Road/Hills Road Netherhall Impington VC	Yes Yes Yes	Goldrider Goldrider Goldrider	Cambridge Regional College Long Road Sixth Form The Parkside Federation COWA, Milton	Yes Yes Yes Yes	Goldrider Goldrider Goldrider Goldrider
<b>Fen Drayton</b>	Long Road/Hills Road Impington VC St Ivo	Yes Yes Yes	GR or St Goldrider Standard	Huntingdon Regional College Cambridge Regional College The Parkside Federation	Yes Yes Yes	Standard Goldrider Goldrider
<b>Fenstanton</b>	Long Road/Hills Road Impington VC St Ivo	Yes Yes Yes	GR or St Goldrider Standard	Huntingdon Regional College Cambridge Regional College The Parkside Federation	Yes Yes Yes	Standard Goldrider Goldrider
<b>Fenton</b>	Abbey College	No	–	Huntingdon Regional College	Yes	GR or St
<b>Folksworth</b>	Sawtry CC	Yes	Standard	Peterborough Regional College	Yes	Standard
<b>Fordham</b>	City of Ely CC	Yes	Standard	Cambridge Regional College	Contact CRC directly	
<b>Foul Anchor</b>	Refer to Ed Transport	–	–	COWA Isle	Yes	Standard
<b>Four Gotes</b>	Refer to Ed Transport	–	–	Refer to Ed Transport	–	–
<b>Fourfields</b>	Stanground C	No	–	Refer to Ed Transport	–	–
<b>Fowlmere</b>	Long Road/Hills Road Netherhall Impington VC	Yes Yes Yes	Standard Standard Standard	Refer to Ed Transport	–	–
<b>Foxton</b>	Long Road/Hills Road Netherhall Meridian (Royston)	Yes Yes Yes	Goldrider Goldrider Rail	Refer to Ed Transport	–	–
<b>Fridaybridge</b>	Refer to Ed Transport	–	–	COWA Isle	Yes	Standard
<b>Fulbourn</b>	Long Road/Hills Road Netherhall Impington VC	Yes No Yes	Other – Other	Cambridge Regional College Long Road Sixth Form The Parkside Federation COWA, Milton	Yes Yes Yes Yes	Other Other Other Other
<b>Gamlingay</b>	Stratton Upper School	Yes	Standard	Bedford College	Yes	Goldrider
<b>Gaynes Hall</b>	Longsands CC	Yes	Standard	Huntingdon Regional College	Yes	Standard
<b>Gedney (Lincs)</b>	Contact Lincolnshire CC	N/A	N/A	Contact Lincolnshire CC	N/A	N/A
<b>Girton</b>	Long Road/Hills Road Netherhall Impington VC	Yes Yes Yes	Other Other Other or St	Cambridge Regional College Long Road Sixth Form The Parkside Federation COWA, Milton	Yes Yes Yes Yes	Other Other Other Other
<b>Glatton</b>	Sawtry CC	Yes	Standard	Peterborough Regional College	Yes	Standard
<b>Godmanchester</b>	Hinchingbrooke	No	–	Huntingdon Regional College	No	–
<b>Gorefield</b>	Refer to Ed Transport	–	–	COWA Isle	Yes	Standard
<b>Grafham</b>	Hinchingbrooke	Yes	Standard	Huntingdon Regional College	Yes	Standard
<b>Grantchester</b>	Long Road/Hills Road Netherhall Comberton VC	Yes Yes Yes	Other Other Other	Cambridge Regional College Long Road Sixth Form The Parkside Federation COWA, Milton	Yes Yes Yes Yes	Other Other Other Other
<b>Graveley</b>	Longsands CC	Yes	Standard	Huntingdon Regional College	Yes	Standard
<b>Great Abington</b>	Long Road/Hills Road Netherhall Impington VC	Yes Yes Yes	Goldrider Goldrider Goldrider	Cambridge Regional College Long Road Sixth Form The Parkside Federation COWA, Milton	Yes Yes Yes Yes	Goldrider Goldrider Goldrider Goldrider

Town/Village	As/A2 Level Base	Qualify for assistance	Ticket type	Vocational Base	Qualify for assistance	Ticket type
<b>Great Bradley (Suffolk)</b>	Contact Suffolk CC	N/A	N/A	Contact Suffolk CC	N/A	N/A
<b>Great Chishill</b>	Long Road/Hills Road Netherhall Meridian (Royston)	Yes Yes Yes	Standard Standard Standard	Cambridge Regional College Long Road Sixth Form The Parkside Federation COWA, Milton	Yes Yes Yes Yes	Standard Standard Standard Standard
<b>Great Eversden</b>	Long Road/Hills Road Netherhall Comberton VC	Yes Yes Yes	GR or St Goldrider Standard	Cambridge Regional College Long Road Sixth Form The Parkside Federation COWA, Milton	Yes Yes Yes Yes	Goldrider GR or St Goldrider Goldrider
<b>Great Gidding</b>	Sawtry CC	Yes	Standard	Peterborough Regional College	Yes	Standard
<b>Great Gransden</b>	St Neots CC	Yes	Standard	Huntingdon Regional College	Yes	Standard
<b>Great Paxton</b>	Longsands CC	Yes	Standard	Huntingdon Regional College	Yes	Standard
<b>Great Shelford</b>	Long Road/Hills Road Netherhall Impington VC	Yes Yes Yes	Other Other Other	Cambridge Regional College Long Road Sixth Form The Parkside Federation COWA, Milton	Yes Yes Yes Yes	Other Other Other Other
<b>Great Staughton</b>	Longsands CC	Yes	Standard	Huntingdon Regional College	Yes	Standard
<b>Great Stukeley</b>	St Peters School	No	–	Huntingdon Regional College	No	–
<b>Great Wilbraham</b>	Long Road/Hills Road Netherhall	Yes Yes	Goldrider Goldrider	Cambridge Regional College Long Road Sixth Form The Parkside Federation COWA, Milton	Yes Yes Yes Yes	Goldrider Goldrider Goldrider Goldrider
<b>Great Wratting</b>	Contact Suffolk CC	N/A	N/A	Contact Suffolk CC	N/A	N/A
<b>Guilden Morden</b>	Long Road/Hills Road Netherhall Meridian (Royston)	Yes Yes Yes	Goldrider Goldrider Standard	Cambridge Regional College Long Road Sixth Form The Parkside Federation COWA, Milton	Yes Yes Yes Yes	Goldrider Goldrider Goldrider Goldrider
<b>Guyhirn</b>	Neale Wade CC	Yes	Standard	COWA Isle	Yes	Standard
<b>Haddenham</b>	City of Ely CC	Yes	Goldrider	Cambridge Regional College	Yes	Goldrider
<b>Haddenham Causeway</b>	City of Ely CC	Yes	Goldrider	Cambridge Regional College	Yes	Goldrider
<b>Haddon</b>	Orton Longueville School	No	–	Peterborough Regional College	Yes	Standard
<b>Hadstock</b>	Contact Essex CC	N/A	N/A	Contact Essex CC	N/A	N/A
<b>Hail Weston</b>	Longsands CC	Yes	Standard	Huntingdon Regional College	Yes	Standard
<b>Hale Fen</b>	City of Ely CC	Yes	Standard	COWA Isle	Yes	Standard
<b>Hamerton</b>	Sawtry CC	Yes	Standard	Huntingdon Regional College	Yes	Standard
<b>Hanchett End (Suffolk)</b>	Contact Suffolk CC	N/A	N/A	Contact Suffolk CC	N/A	N/A
<b>Hardwick</b>	Long Road/Hills Road Impington VC Comberton VC	Yes Yes Yes	Other Other Standard	Cambridge Regional College Long Road Sixth Form The Parkside Federation COWA, Milton	Yes Yes Yes Yes	Other Other Other Other
<b>Harlton</b>	Long Road/Hills Road Netherhall Comberton VC	Yes Yes Yes	Standard Standard Standard	Cambridge Regional College Long Road Sixth Form The Parkside Federation COWA, Milton	Yes Yes Yes Yes	Standard Standard Standard Standard

Town/Village	As/A2 Level Base	Qualify for assistance	Ticket type	Vocational Base	Qualify for assistance	Ticket type
<b>Harston</b>	Long Road/Hills Road Netherhall Impington VC	Yes Yes Yes	Goldrider Goldrider Goldrider	Cambridge Regional College Long Road Sixth Form The Parkside Federation COWA, Milton	Yes Yes Yes Yes	Goldrider Goldrider Goldrider Goldrider
<b>Hartford</b>	St Peters School	No	–	Huntingdon Regional College	No	–
<b>Haslingfield</b>	Long Road/Hills Road Netherhall Comberton VC	Yes Yes Yes	GR or St Goldrider Standard	Cambridge Regional College Long Road Sixth Form The Parkside Federation COWA, Milton	Yes Yes Yes Yes	Goldrider GR or St Standard Goldrider
<b>Hatley St. George</b>	Stratton Upper School	Yes	Standard	Bedford College Huntingdon Regional College	Yes Yes	Standard Standard
<b>Hauxton</b>	Long Road/Hills Road Netherhall Impington VC	Yes Yes Yes	GR or St Goldrider Goldrider	Cambridge Regional College Long Road Sixth Form The Parkside Federation COWA, Milton	Yes Yes Yes Yes	Goldrider GR or St Goldrider Goldrider
<b>Helions Bumpstead</b>	Contact Essex CC	N/A	N/A	Contact Essex CC	N/A	N/A
<b>Hemingford Abbots</b>	St Ivo School	Yes	Standard	Huntingdon Regional College	Yes	Standard
<b>Hemingford Grey</b>	St Ivo School	No	–	Huntingdon Regional College	Yes	Standard
<b>Heydon</b>	Long Road/Hills Road Netherhall Meridian (Royston)	Yes Yes Yes	Standard Standard Standard	Cambridge Regional College Long Road Sixth Form The Parkside Federation COWA, Milton	Yes Yes Yes Yes	Standard Standard Standard Standard
<b>Hildersham</b>	Long Road/Hills Road Netherhall Haverhill	Yes Yes Yes	Goldrider Goldrider Goldrider	Cambridge Regional College Long Road Sixth Form The Parkside Federation COWA, Milton	Yes Yes Yes Yes	Goldrider Goldrider Goldrider Goldrider
<b>Hilton</b>	Long Road/Hills Road Impington VC St Ivo	Yes Yes Yes	Standard Standard Standard	Huntingdon Regional College Cambridge Regional College The Parkside Federation	Yes Yes Yes	Standard Standard Standard
<b>Hinchingbrooke</b>	Hinchingbrooke	No	–	Huntingdon Regional College	No	–
<b>Hinxton</b>	Long Road/Hills Road Netherhall Impington VC	Yes Yes Yes	Goldrider Goldrider Goldrider	Cambridge Regional College Long Road Sixth Form The Parkside Federation COWA, Milton	Yes Yes Yes Yes	Goldrider Goldrider Goldrider Goldrider
<b>Hinxworth</b>	Contact Herfordshire CC	N/A	N/A	Contact Herfordshire CC	N/A	N/A
<b>Histon</b>	Long Road/Hills Road Netherhall Impington VC	Yes Yes No	Other Other –	Cambridge Regional College Long Road Sixth Form The Parkside Federation COWA, Milton	Yes Yes Yes Yes	Other Other Other Other
<b>Holme</b>	Sawtry CC	Yes	Standard	Peterborough Regional College	Yes	Standard
<b>Holywell</b>	St Ivo School	Yes	Standard	Huntingdon Regional College	Yes	Goldrider
<b>Horningsea</b>	Long Road/Hills Road Netherhall Impington VC	Yes Yes Yes	Goldrider Goldrider Goldrider	Cambridge Regional College Long Road Sixth Form The Parkside Federation COWA, Milton	Yes Yes Yes Yes	Goldrider Goldrider Goldrider Goldrider
<b>Horseheath</b>	Long Road/Hills Road Netherhall Haverhill	Yes Yes Yes	Goldrider Goldrider Goldrider	Cambridge Regional College Long Road Sixth Form The Parkside Federation COWA, Milton	Yes Yes Yes Yes	Goldrider Goldrider Goldrider Goldrider

Town/Village	As/A2 Level Base	Qualify for assistance	Ticket type	Vocational Base	Qualify for assistance	Ticket type
<b>Houghton</b>	St Peters School	Yes	Standard	Huntingdon Regional College	Yes	Standard
<b>Hundon</b>	Contact Suffolk CC	N/A	N/A	Contact Suffolk CC	N/A	N/A
<b>Hundred Footbank</b>	City of Ely CC	Yes	Standard	COWA Isle	Yes	Standard
<b>Huntingdon</b>	St Peters/Hinchingbrooke	No	–	Huntingdon Regional College	No	–
<b>Ickleton</b>	Long Road/Hills Road Netherhall Impington VC	Yes Yes Yes	Goldrider Goldrider Goldrider	Cambridge Regional College Long Road Sixth Form The Parkside Federation COWA, Milton	Yes Yes Yes Yes	Goldrider Goldrider Goldrider Goldrider
<b>Impington</b>	Long Road/Hills Road Netherhall Impington VC	Yes Yes No	Other Other –	Cambridge Regional College Long Road Sixth Form The Parkside Federation COWA, Milton	Split Yes Yes Yes	Other Other Other Other
<b>Isleham</b>	City of Ely CC	Yes	Standard	Cambridge Regional College	Yes	Goldrider
<b>Kennett</b>	City of Ely CC	Yes	Standard	Cambridge Regional College	Yes	Goldrider
<b>Kentford</b>	Contact Suffolk CC	N/A	N/A	Contact Suffolk CC	N/A	N/A
<b>Keyston</b>	Hinchingbrooke	Yes	Standard	Huntingdon Regional College	Yes	Goldrider
<b>Kimbolton</b>	Longsands CC	Yes	Standard	Huntingdon Regional College	Yes	Goldrider
<b>Kings Ripton</b>	St Peters School	Yes	Standard	Huntingdon Regional College	Yes	Standard
<b>Kingston</b>	Long Road/Hills Road Netherhall Comberton VC	Yes Yes Yes	Goldrider Goldrider Standard	Cambridge Regional College Long Road Sixth Form The Parkside Federation COWA, Milton	Yes Yes Yes Yes	Goldrider Goldrider Goldrider Goldrider
<b>Kirtling Saxon St.</b>	Long Road/Hills Road Impington VC Newmarket College	Yes Yes Yes	Goldrider Goldrider Goldrider	Cambridge Regional College Long Road Sixth Form The Parkside Federation COWA, Milton	Yes Yes Yes Yes	Goldrider Goldrider Goldrider Goldrider
<b>Knapwell</b>	Long Road/Hills Road Netherhall Impington VC	Yes Yes Yes	Standard Standard Standard	Cambridge Regional College Long Road Sixth Form The Parkside Federation COWA, Milton	Yes Yes Yes Yes	Standard Standard Standard Standard
<b>Kneesworth</b>	Long Road/Hills Road Netherhall Meridian (Royston)	Yes Yes Yes	Goldrider Goldrider Standard	Cambridge Regional College Long Road Sixth Form The Parkside Federation COWA, Milton	Yes Yes Yes Yes	Goldrider Goldrider Goldrider Goldrider
<b>Lakesend</b>	Contact Norfolk CC	N/A	N/A	Contact Norfolk CC	N/A	N/A
<b>Landbeach</b>	Long Road/Hills Road Netherhall Impington VC	Yes Yes Yes	Goldrider Goldrider Goldrider	Cambridge Regional College Long Road Sixth Form The Parkside Federation COWA, Milton	Yes Yes Yes Yes	Goldrider Goldrider Goldrider Goldrider
<b>Leighton Bromswold</b>	Hinchingbrooke	Yes	Standard	Huntingdon Regional College	Yes	Goldrider
<b>Leverington</b>	Refer to Ed Transport	–	–	COWA Isle	Yes	Standard
<b>Linton</b>	Long Road/Hills Road Netherhall Haverhill	Yes Yes Yes	Goldrider Goldrider Goldrider	Cambridge Regional College Long Road Sixth Form The Parkside Federation COWA, Milton	Yes Yes Yes Yes	Goldrider Goldrider Goldrider Goldrider
<b>Litlington</b>	Long Road/Hills Road Netherhall Meridian (Royston)	Yes Yes Yes	Goldrider Goldrider Standard	Cambridge Regional College Long Road Sixth Form The Parkside Federation COWA, Milton	Yes Yes Yes Yes	Goldrider Goldrider Goldrider Goldrider

Town/Village	As/A2 Level Base	Qualify for assistance	Ticket type	Vocational Base	Qualify for assistance	Ticket type
<b>Little Abington</b>	Long Road/Hills Road	Yes	Goldrider	Cambridge Regional College	Yes	Goldrider
	Netherhall	Yes	Goldrider	Long Road Sixth Form	Yes	Goldrider
	Impington VC	Yes	Goldrider	The Parkside Federation	Yes	Goldrider
				COWA, Milton	Yes	Goldrider
<b>Little Bradley</b>	Contact Suffolk CC	N/A	N/A	Contact Suffolk CC	N/A	N/A
<b>Little Chesterford</b>	Contact Essex CC	N/A	N/A	Contact Essex CC	N/A	N/A
<b>Little Chishill</b>	Long Road/Hills Road	Yes	Standard	Cambridge Regional College	Yes	Standard
	Netherhall	Yes	Standard	Long Road Sixth Form	Yes	Standard
	Meridian (Royston)	Yes	Standard	The Parkside Federation	Yes	Standard
				COWA, Milton	Yes	Standard
<b>Little Ditton</b>	Long Road/Hills Road	Yes	Goldrider	Cambridge Regional College	Yes	Goldrider
	Impington VC	Yes	Goldrider	Long Road Sixth Form	Yes	Goldrider
	Newmarket College	Yes	Goldrider	The Parkside Federation	Yes	Goldrider
				COWA, Milton	Yes	Goldrider
<b>Little Downham</b>	City of Ely CC	Yes	Standard	Cambridge Regional College	Yes	Goldrider
<b>Little Eversden</b>	Long Road/Hills Road	Yes	GR or St	Cambridge Regional College	Yes	Goldrider
	Netherhall	Yes	Goldrider	Long Road Sixth Form	Yes	GR or St
	Comberton VC	Yes	Standard	The Parkside Federation	Yes	Goldrider
				COWA, Milton	Yes	Goldrider
<b>Little Gidding</b>	Sawtry CC	Yes	Standard	Huntingdon Regional College	Yes	Standard
<b>Little Gransden</b>	St Neots CC	Yes	Standard	Huntingdon Regional College	Yes	Standard
<b>Little Ouse</b>	City of Ely CC	Yes	Standard	COWA Isle	Yes	Standard
<b>Little Paxton</b>	Longsands CC	No	–	Huntingdon Regional College	Yes	Standard
<b>Little Shelford</b>	Long Road/Hills Road	Yes	Standard	Cambridge Regional College	Yes	Standard
	Netherhall	Yes	Standard	Long Road Sixth Form	Yes	Standard
	Impington VC	Yes	Standard	The Parkside Federation	Yes	Standard
				COWA, Milton	Yes	Standard
<b>Little Stukeley</b>	St Peters School	Yes	Standard	Huntingdon Regional College	Yes	Goldrider
<b>Little Thetford</b>	City of Ely CC	Yes	Goldrider	Cambridge Regional College	Yes	Goldrider
<b>Little Thurlow</b>	Contact Essex CC	N/A	N/A	Contact Essex CC	N/A	N/A
<b>Little Wilbraham</b>	Long Road/Hills Road	Yes	Goldrider	Cambridge Regional College	Yes	Goldrider
	Netherhall	Yes	Goldrider	Long Road Sixth Form	Yes	Goldrider
				The Parkside Federation	Yes	Goldrider
				COWA, Milton	Yes	Goldrider
<b>Littleport</b>	City of Ely CC	Yes	Standard	COWA Isle	Yes	Standard
<b>Lode</b>	Long Road/Hills Road	Yes	Goldrider	Cambridge Regional College	Yes	Goldrider
	Netherhall	Yes	Goldrider	Long Road Sixth Form	Yes	Goldrider
	Impington VC	Yes	Goldrider	The Parkside Federation	Yes	Goldrider
				COWA, Milton	Yes	Goldrider
<b>Lolworth</b>	Long Road/Hills Road	Yes	Other	Cambridge Regional College	Yes	Other
	Netherhall	Yes	Other	Long Road Sixth Form	Yes	Other
	Impington VC	Yes	Other	The Parkside Federation	Yes	Other
				COWA, Milton	Yes	Other
<b>Longstanton</b>	Long Road/Hills Road	Yes	Goldrider	Cambridge Regional College	Yes	Goldrider
	Impington VC	Yes	Goldrider	Long Road Sixth Form	Yes	Goldrider
				The Parkside Federation	Yes	Goldrider
				COWA, Milton	Yes	Goldrider
<b>Longstowe</b>	Long Road/Hills Road	Yes	Goldrider	Cambridge Regional College	Yes	Goldrider
	Netherhall	Yes	Goldrider	Long Road Sixth Form	Yes	Goldrider
	Comberton VC	Yes	Goldrider	The Parkside Federation	Yes	Goldrider
				COWA, Milton	Yes	Goldrider

Town/Village	As/A2 Level Base	Qualify for assistance	Ticket type	Vocational Base	Qualify for assistance	Ticket type
<b>Lordship Stud</b>	Long Road/Hills Road Netherhall Newmarket College	Yes Yes No	Goldrider Goldrider –	Cambridge Regional College Long Road Sixth Form The Parkside Federation COWA, Milton	Yes Yes Yes Yes	Goldrider Goldrider Goldrider Goldrider
<b>Madingley</b>	Long Road/Hills Road Comberton VC Impington VC	Yes Yes Yes	Goldrider Standard Goldrider	Cambridge Regional College Long Road Sixth Form The Parkside Federation COWA, Milton	Yes Yes Yes Yes	Goldrider Goldrider Goldrider Goldrider
<b>Manea</b>	Cromwell CC / Neale Wade CC	Yes	Standard	COWA Isle	Yes	Standard
<b>March</b>	Neale Wade CC	No	–	COWA Isle	Yes	Standard
<b>Maxey</b>	Contact Peterborough CC	N/A	N/A	Contact Peterborough CC	N/A	N/A
<b>Melbourn</b>	Long Road/Hills Road Netherhall Meridian (Royston)	Yes Yes Yes	Goldrider Goldrider Rail	Cambridge Regional College Long Road Sixth Form The Parkside Federation COWA, Milton	Yes Yes Yes Yes	Goldrider Goldrider Goldrider Goldrider
<b>Meldreth</b>	Long Road/Hills Road Netherhall Meridian (Royston)	Yes Yes Yes	Goldrider Goldrider Rail	Cambridge Regional College Long Road Sixth Form The Parkside Federation COWA, Milton	Yes Yes Yes Yes	Goldrider Goldrider Goldrider Goldrider
<b>Mepal</b>	City of Ely CC	Yes	Goldrider	Cambridge Regional College	Yes	Goldrider
<b>Milton</b>	Long Road/Hills Road Netherhall Impington VC	Yes Yes Yes	Other Other Other	Cambridge Regional College Long Road Sixth Form The Parkside Federation COWA, Milton	Yes Yes Yes No	Other Other Other Other
<b>Molesworth</b>	Hinchingsbrooke	Yes	Standard	Huntingdon Regional College	Yes	Goldrider
<b>Morborne</b>	Sawtry CC	Yes	Standard	Peterborough Regional College	Yes	Standard
<b>Moulton</b>	Contact Suffolk CC	N/A	N/A	Contact Suffolk CC	N/A	N/A
<b>Murrow</b>	Refer to Ed Transport	–	–	COWA Isle	Yes	Standard
<b>National Stud</b>	Long Road/Hills Road Netherhall Newmarket College	Yes Yes No	Goldrider Goldrider –	Cambridge Regional College Long Road Sixth Form The Parkside Federation COWA, Milton	Yes Yes Yes Yes	Goldrider Goldrider Goldrider Goldrider
<b>Needingworth</b>	St Ivo School	No	–	Huntingdon Regional College	Yes	Goldrider
<b>New Wimpole</b>	Long Road/Hills Road Netherhall Impington VC	Yes Yes Yes	GR or St Goldrider Goldrider	Cambridge Regional College Long Road Sixth Form The Parkside Federation COWA, Milton	Yes Yes Yes Yes	Goldrider GR or St Standard Goldrider
<b>Newton (near Harston)</b>	Long Road/Hills Road Netherhall Impington VC	Yes Yes Yes	Standard Standard Standard	Cambridge Regional College Long Road Sixth Form The Parkside Federation COWA, Milton	Yes Yes Yes Yes	Standard Standard Standard Standard
<b>Newton (near Wisbech)</b>	Refer to Ed Transport	–	–	COWA Isle	Yes	Standard
<b>Norman Cross</b>	Sawtry CC	Yes	Standard	Peterborough Regional College	Yes	Standard
<b>Oakington</b>	Long Road/Hills Road Netherhall Impington VC	Yes Yes Yes	Other Other Other	Cambridge Regional College Long Road Sixth Form The Parkside Federation COWA, Milton	Split Yes Yes Yes	Other Other Other Other

Town/Village	As/A2 Level Base	Qualify for assistance	Ticket type	Vocational Base	Qualify for assistance	Ticket type
<b>Odsey</b>	Long Road/Hills Road Netherhall Meridian (Royston)	Yes Yes Yes	Rail Rail Rail	Cambridge Regional College Long Road Sixth Form The Parkside Federation COWA, Milton	Yes Yes Yes Yes	Rail Rail Rail Rail
<b>Offord Cluny</b>	Hinchingbrooke	Yes	Standard	Huntingdon Regional College	Yes	Goldrider
<b>Offord D' Arcy</b>	Hinchingbrooke	Yes	Standard	Huntingdon Regional College	Yes	Goldrider
<b>Old Weston</b>	Hinchingbrooke	Yes	Standard	Huntingdon Regional College	Yes	Goldrider
<b>Oldhurst</b>	Abbey College	Yes	Standard	Huntingdon Regional College	Yes	GR or St
<b>Orwell</b>	Long Road/Hills Road Netherhall Impington VC	Yes Yes Yes	GR or St Standard Goldrider	Cambridge Regional College Long Road Sixth Form The Parkside Federation COWA, Milton	Yes Yes Yes Yes	Goldrider GR or St Goldrider Goldrider
<b>Outwell</b>	Contact Norfolk CC	N/A	N/A	Contact Norfolk CC	N/A	N/A
<b>Over</b>	Long Road/Hills Road Impington VC Comberton VC	Yes Yes Yes	Goldrider Goldrider Goldrider	Cambridge Regional College Long Road Sixth Form The Parkside Federation COWA, Milton	Yes Yes Yes Yes	Goldrider Goldrider Goldrider Goldrider
<b>Pampisford</b>	Long Road/Hills Road Netherhall Impington VC	Yes Yes Yes	Goldrider Goldrider Goldrider	Cambridge Regional College Long Road Sixth Form The Parkside Federation COWA, Milton	Yes Yes Yes Yes	Goldrider Goldrider Goldrider Goldrider
<b>Papworth Everard</b>	Long Road/Hills Road Netherhall Impington VC	Yes Yes Yes	Standard Standard Standard	Cambridge Regional College Long Road Sixth Form The Parkside Federation COWA, Milton	Yes Yes Yes Yes	Standard Standard Standard Standard
<b>Papworth St. Agnes</b>	Longsands CC	Yes	Standard	Huntingdon Regional College	Yes	Standard
<b>Parson Drove</b>	Refer to Ed Transport	–	–	COWA Isle	Yes	Standard
<b>Perry</b>	Longsands CC	Yes	Standard	Huntingdon Regional College	Yes	Goldrider
<b>Pidley</b>	Abbey College	Yes	Standard	Huntingdon Regional College	Yes	GR or St
<b>Pondersbridge</b>	Sir Harry Smith CC	Yes	Standard	Peterborough Regional College	Yes	Standard
<b>Potton</b>	Contact Bedfordshire CC	N/A	N/A	Contact Bedfordshire CC	N/A	N/A
<b>Prickwillow</b>	City of Ely CC	Yes	Standard	Cambridge Regional College	Yes	Goldrider
<b>Pymoor</b>	City of Ely CC	Yes	Standard	COWA Isle	Yes	Standard
<b>Queen Adalaide</b>	City of Ely CC	Yes	Standard	Cambridge Regional College	Yes	Goldrider
<b>Rampton</b>	Long Road/Hills Road Netherhall Impington VC	Yes Yes Yes	Goldrider Goldrider Goldrider	Cambridge Regional College Long Road Sixth Form The Parkside Federation COWA, Milton	Yes Yes Yes Yes	Goldrider Goldrider Goldrider Goldrider
<b>Ramsey</b>	Abbey College	No	–	Huntingdon Regional College	Yes	Goldrider
<b>Ramsey Forty Foot</b>	Abbey College	Yes	Standard	Huntingdon Regional College Peterborough Regional College	Yes Yes	Goldrider Standard
<b>Ramsey Heights</b>	Abbey College	Yes	Standard	Huntingdon Regional College	Yes	Standard
<b>Ramsey Mereside</b>	Abbey College	Yes	Standard	Huntingdon Regional College Peterborough Regional College	Yes Yes	Goldrider Standard
<b>Ramsey St. Mary</b>	Abbey College	Yes	Standard	Peterborough Regional College	Yes	Standard

Town/Village	As/A2 Level Base	Qualify for assistance	Ticket type	Vocational Base	Qualify for assistance	Ticket type
<b>Reach</b>	Long Road/Hills Road Netherhall Impington VC	Yes Yes Yes	Goldrider Goldrider Goldrider	Cambridge Regional College Long Road Sixth Form The Parkside Federation COWA, Milton	Yes Yes Yes Yes	Goldrider Goldrider Goldrider Goldrider
<b>Redmere</b>	City of Ely CC	Yes	Standard	Cambridge Regional College COWA Isle	Yes Yes	Goldrider Standard
<b>Rings End</b>	Neale Wade CC	Yes	Standard	COWA Isle	Yes	Standard
<b>Sawston</b>	Long Road/Hills Road Netherhall Impington VC	Yes Yes Yes	Goldrider Goldrider Goldrider	Cambridge Regional College Long Road Sixth Form The Parkside Federation COWA, Milton	Yes Yes Yes Yes	Goldrider Goldrider Goldrider Goldrider
<b>Sawtry</b>	Sawtry CC	No	–	Huntingdon Regional College	Yes	Goldrider
<b>Saxon Sreet</b>	Long Road/Hills Road Impington VC Newmarket College	Yes Yes Yes	Goldrider Goldrider Goldrider	Cambridge Regional College Long Road Sixth Form The Parkside Federation COWA, Milton	Yes Yes Yes Yes	Goldrider Goldrider Goldrider Goldrider
<b>Shelford Bottom</b>	Long Road/Hills Road Netherhall Impington VC	Yes Yes Yes	Other Other Other	Cambridge Regional College Long Road Sixth Form The Parkside Federation COWA, Milton	Yes Yes Yes Yes	Other Other Other Other
<b>Shepreth</b>	Long Road/Hills Road Netherhall Meridian (Royston)	Yes Yes Yes	Goldrider Goldrider Rail	Cambridge Regional College Long Road Sixth Form The Parkside Federation COWA, Milton	Yes Yes Yes Yes	Goldrider Goldrider Goldrider Goldrider
<b>Shingay-Cum-Wendy</b>	Long Road/Hills Road Netherhall Meridian (Royston)	Yes Yes Yes	Goldrider Goldrider Standard	Cambridge Regional College Long Road Sixth Form The Parkside Federation COWA, Milton	Yes Yes Yes Yes	Goldrider Goldrider Goldrider Goldrider
<b>Shipea Hill</b>	City of Ely CC	Yes	Standard	Refer to Education Transport	–	–
<b>Shudy Camps</b>	Long Road/Hills Road Netherhall Impington VC	Yes Yes Yes	Goldrider Goldrider Goldrider	Cambridge Regional College Long Road Sixth Form The Parkside Federation COWA, Milton	Yes Yes Yes Yes	Goldrider Goldrider Goldrider Goldrider
<b>Six Mile Bottom</b>	Long Road/Hills Road Netherhall	Yes Yes	Goldrider Goldrider	Cambridge Regional College Long Road Sixth Form The Parkside Federation COWA, Milton	Yes Yes Yes Yes	Goldrider Goldrider Goldrider Goldrider
<b>Snailwell</b>	City of Ely CC	Yes	Standard	Cambridge Regional College	Yes	Goldrider
<b>Soham</b>	City of Ely CC	Yes	Standard	Cambridge Regional College	Contact CRC directly	
<b>Somersham</b>	Abbey College / St Ivo	Yes	Standard	Huntingdon Regional College	Yes	Standard
<b>Southoe</b>	Hinchingbrooke	Yes	Standard	Huntingdon Regional College	Yes	Standard
<b>Spaldwick</b>	Hinchingbrooke	Yes	Standard	Huntingdon Regional College	Yes	Standard
<b>Stapleford</b>	Long Road/Hills Road Netherhall Impington VC	Yes Yes Yes	Other Other Other	Cambridge Regional College Long Road Sixth Form The Parkside Federation COWA, Milton	Yes Yes Yes Yes	Other Other Other Other
<b>Steeple Bumpstead</b>	Contact Essex CC	N/A	N/A	Contact Essex CC	N/A	N/A
<b>Steeple Gidding</b>	Sawtry CC	Yes	Standard	Huntingdon Regional College	Yes	Standard
<b>Steeple Morden</b>	Long Road/Hills Road Netherhall Meridian (Royston)	Yes Yes Yes	Goldrider Goldrider Standard	Cambridge Regional College Long Road Sixth Form The Parkside Federation COWA, Milton	Yes Yes Yes Yes	Goldrider Goldrider Goldrider Goldrider

Town/Village	As/A2 Level Base	Qualify for assistance	Ticket type	Vocational Base	Qualify for assistance	Ticket type
<b>Stetchworth</b>	Long Road/Hills Road	Yes	Goldrider	Cambridge Regional College	Yes	Goldrider
	Netherhall	Yes	Goldrider	Long Road Sixth Form	Yes	Goldrider
	Newmarket College	Yes	Goldrider	The Parkside Federation COWA, Milton	Yes Yes	Goldrider Goldrider
<b>Stetchworth CEY</b>	Contact Bedfordshire CC	N/A	N/A	Contact Bedfordshire CC	N/A	N/A
<b>Stibbington</b>	Orton Longueville School	Yes	Standard	Peterborough Regional College	Yes	Standard
<b>Stilton</b>	Sawtry CC	Yes	Standard	Peterborough Regional College	Yes	Standard
<b>Stirtloe</b>	Hinchingbrooke	Yes	Standard	Huntingdon Regional College	Yes	Standard
<b>Stonea</b>	Cromwell CC	No	–	COWA Isle	Yes	Standard
<b>Stonely</b>	Longsands CC	Yes	Standard	Huntingdon Regional College	Yes	Standard
<b>Stow Longa</b>	Hinchingbrooke	Yes	Standard	Huntingdon Regional College	Yes	Goldrider
<b>Stow-Cum-Quy</b>	Long Road/Hills Road	Yes	Goldrider	Cambridge Regional College	Yes	Goldrider
	Netherhall	Yes	Goldrider	Long Road Sixth Form	Yes	Goldrider
	Impington VC	Yes	Goldrider	The Parkside Federation COWA, Milton	Yes Yes	Goldrider Goldrider
<b>Streetly End</b>	Long Road/Hills Road	Yes	Goldrider	Cambridge Regional College	Yes	Goldrider
	Netherhall	Yes	Goldrider	Long Road Sixth Form	Yes	Goldrider
	Haverhill	Yes	Goldrider	The Parkside Federation COWA, Milton	Yes Yes	Goldrider Goldrider
<b>Stretham</b>	City of Ely CC	Yes	Goldrider	Cambridge Regional College	Contact CRC directly	
<b>Stukeley Meadows</b>	St Peters School	No	–	Huntingdon Regional College	No	–
<b>Stuntney</b>	City of Ely CC	No	–	Cambridge Regional College	Yes	Goldrider
<b>St Ives</b>	St Ivo School	No	–	Huntingdon Regional College	Yes	GR or St
<b>St Neots</b>	Various	No	–	Bedford College	Yes	Goldrider
				Huntingdon Regional College	Yes	Standard
<b>Sutton</b>	City of Ely CC	Yes	Goldrider	Cambridge Regional College	Contact CRC directly	
<b>Sutton Bridge</b>	Contact Lincolnshire CC	N/A	N/A	Contact Lincolnshire CC	N/A	N/A
<b>Swaffham Bulbeck</b>	Long Road/Hills Road	Yes	Goldrider	Cambridge Regional College	Yes	Goldrider
	Netherhall	Yes	Goldrider	Long Road Sixth Form	Yes	Goldrider
	Newmarket College	Yes	Goldrider	The Parkside Federation COWA, Milton	Yes Yes	Goldrider Goldrider
<b>Swaffham Prior</b>	Long Road/Hills Road	Yes	Goldrider	Cambridge Regional College	Yes	Goldrider
	Netherhall	Yes	Goldrider	Long Road Sixth Form	Yes	Goldrider
	Newmarket College	Yes	Goldrider	The Parkside Federation COWA, Milton	Yes Yes	Goldrider Goldrider
<b>Swavesey</b>	Long Road/Hills Road	Yes	GR or St	Cambridge Regional College	Yes	Goldrider
	Impington VC	Yes	Goldrider	Long Road Sixth Form	Yes	GR or St
				The Parkside Federation COWA, Milton	Yes Yes	Goldrider Goldrider
<b>Tadlow</b>	Long Road/Hills Road	Yes	Standard	Cambridge Regional College	Yes	Standard
	Netherhall	Yes	Standard	Long Road Sixth Form	Yes	Standard
	Impington VC	Yes	Standard	The Parkside Federation COWA, Milton	Yes Yes	Standard Standard
<b>Teversham</b>	Long Road/Hills Road	Yes	Other	Cambridge Regional College	Yes	Other
	Netherhall	Yes	Other	Long Road Sixth Form	Yes	Other
	Impington VC	Yes	Other	The Parkside Federation COWA, Milton	Yes Yes	Other Other
<b>Thorney</b>	Contact Peterborough CC	N/A	N/A	Contact Peterborough CC	N/A	N/A

Town/Village	As/A2 Level Base	Qualify for assistance	Ticket type	Vocational Base	Qualify for assistance	Ticket type
<b>Thorney Toll</b>	Neale Wade CC	Yes	Standard	COWA Isle	Yes	Standard
<b>Thriplow</b>	Long Road/Hills Road Netherhall Impington VC	Yes Yes Yes	Standard Standard Standard	Cambridge Regional College Long Road Sixth Form The Parkside Federation COWA, Milton	Yes Yes Yes Yes	Standard Standard Standard Standard
<b>Throckenholt</b>	Contact Lincolnshire CC	N/A	N/A	Contact Lincolnshire CC	N/A	N/A
<b>Thurlow</b>	Contact Essex CC	N/A	N/A	Contact Essex CC	N/A	N/A
<b>Tilbrook</b>	Longsands CC	Yes	Standard	Huntingdon Regional College	Yes	Standard
<b>TipSEND</b>	Refer to Ed Transport	–	–	Refer to Ed Transport	–	–
<b>Toft</b>	Long Road/Hills Road Netherhall Comberton VC	Yes Yes No	Other Other –	Cambridge Regional College Long Road Sixth Form The Parkside Federation COWA, Milton	Yes Yes Yes Yes	Other Other Other Other
<b>Toseland</b>	Longsands CC	Yes	Standard	Huntingdon Regional College	Yes	Standard
<b>Turves</b>	Sir Harry Smith CC	Yes	Standard	Peterborough Regional College	Yes	Standard
<b>Tydd Gote</b>	Refer to Ed Transport	–	–	Refer to Ed Transport	–	–
<b>Tydd St. Giles</b>	Refer to Ed Transport	–	–	Refer to Ed Transport	–	–
<b>Tydd St. Mary</b>	Contact Lincolnshire CC	N/A	N/A	Contact Lincolnshire CC	N/A	N/A
<b>Upend</b>	Long Road/Hills Road Impington VC Newmarket College	Yes Yes Yes	Goldrider Goldrider Goldrider	Cambridge Regional College Long Road Sixth Form The Parkside Federation COWA, Milton	Yes Yes Yes Yes	Goldrider Goldrider Goldrider Goldrider
<b>Upware</b>	City of Ely CC	Yes	Standard	Cambridge Regional College	Yes	Goldrider
<b>Upwell</b>	Contact Norfolk CC	N/A	N/A	Contact Norfolk CC	N/A	N/A
<b>Upwood</b>	Abbey College	Split	–	Huntingdon Regional College	Yes	Goldrider
<b>Walpole Highway</b>	Contact Norfolk CC	N/A	N/A	Contact Norfolk CC	N/A	N/A
<b>Wansford</b>	Orton Longueville School	No	–	Peterborough Regional College	Contact PRC directly	
<b>Warboys</b>	Abbey College	Yes	Standard	Huntingdon Regional College	Yes	Goldrider
<b>Wardy Hill</b>	City of Ely CC	Yes	Standard	Cambridge Regional College	Yes	Goldrider
<b>Waresley</b>	St Neots CC	Yes	Standard	Huntingdon Regional College	Yes	Standard
<b>Washingley</b>	Sawtry CC	Yes	Standard	Peterborough Regional College	Yes	Standard
<b>Water Newton</b>	Orton Longueville School	No	–	Peterborough Regional College	Yes	Standard
<b>Waterbeach</b>	Long Road/Hills Road Netherhall Impington VC	Yes Yes Yes	Goldrider Goldrider Goldrider	Cambridge Regional College Long Road Sixth Form The Parkside Federation COWA, Milton	Yes Yes Yes Yes	Goldrider Goldrider Goldrider Goldrider
<b>Way-Head</b>	City of Ely CC	Yes	Standard	Cambridge Regional College	Yes	Goldrider
<b>Welney</b>	Contact Norfolk CC	N/A	N/A	Contact Norfolk CC	N/A	N/A
<b>Wendy</b>	Long Road/Hills Road Netherhall Meridian (Royston)	Yes Yes Yes	Goldrider Goldrider Standard	Cambridge Regional College Long Road Sixth Form The Parkside Federation COWA, Milton	Yes Yes Yes Yes	Goldrider Goldrider Goldrider Goldrider
<b>Wennington</b>	St Peters School	Yes	Standard	Huntingdon Regional College	Yes	Standard
<b>Wentworth</b>	City of Ely CC	Yes	Goldrider	Cambridge Regional College	Yes	Goldrider

Town/Village	As/A2 Level Base	Qualify for assistance	Ticket type	Vocational Base	Qualify for assistance	Ticket type
<b>West Perry</b>	Longsands CC	Yes	Standard	Huntingdon Regional College	Yes	Standard
<b>West Walton</b>	Contact Norfolk CC	N/A	N/A	Contact Norfolk CC	N/A	N/A
<b>West Wickham</b>	Long Road/Hills Road Netherhall Impington VC	Yes Yes Yes	Goldrider Goldrider Goldrider	Cambridge Regional College Long Road Sixth Form The Parkside Federation COWA, Milton	Yes Yes Yes Yes	Goldrider Goldrider Goldrider Goldrider
<b>West Wratting</b>	Long Road/Hills Road Netherhall Impington VC	Yes Yes Yes	Goldrider Goldrider Goldrider	Cambridge Regional College Long Road Sixth Form The Parkside Federation COWA, Milton	Yes Yes Yes Yes	Goldrider Goldrider Goldrider Goldrider
<b>Westley Waterless</b>	Long Road/Hills Road Impington VC Impington VC	Yes Yes Yes	Goldrider Goldrider Goldrider	Cambridge Regional College Long Road Sixth Form The Parkside Federation COWA, Milton	Yes Yes Yes Yes	Goldrider Goldrider Goldrider Goldrider
<b>Weston Colville</b>	Long Road/Hills Road Netherhall Impington VC	Yes Yes Yes	Goldrider Goldrider Goldrider	Cambridge Regional College Long Road Sixth Form The Parkside Federation COWA, Milton	Yes Yes Yes Yes	Goldrider Goldrider Goldrider Goldrider
<b>Westwick</b>	Long Road/Hills Road Netherhall Impington VC	Yes Yes Yes	Goldrider Goldrider Goldrider	Cambridge Regional College Long Road Sixth Form The Parkside Federation COWA, Milton	Yes Yes Yes Yes	Goldrider Goldrider Goldrider Goldrider
<b>Whaddon</b>	Long Road/Hills Road Netherhall Meridian (Royston)	Yes Yes Yes	Goldrider Goldrider Standard	Cambridge Regional College Long Road Sixth Form The Parkside Federation COWA, Milton	Yes Yes Yes Yes	Goldrider Goldrider Goldrider Goldrider
<b>Whittlesey</b>	Sir Harry Smith CC	No	–	Peterborough Regional College	Yes	Standard
<b>Whittlesford</b>	Long Road/Hills Road Netherhall Impington VC	Yes Yes Yes	Goldrider Goldrider Goldrider	Cambridge Regional College Long Road Sixth Form The Parkside Federation COWA, Milton	Yes Yes Yes Yes	Goldrider Goldrider Goldrider Goldrider
<b>Wicken</b>	City of Ely CC	Yes	Standard	Cambridge Regional College	Yes	Goldrider
<b>Wilburton</b>	City of Ely CC	Yes	Standard	Cambridge Regional College	Yes	Goldrider
<b>Willingham</b>	Long Road/Hills Road Impington VC Comberton VC	Yes Yes Yes	Goldrider Goldrider Standard	Cambridge Regional College Long Road Sixth Form The Parkside Federation COWA, Milton	Yes Yes Yes Yes	Goldrider Goldrider Goldrider Goldrider
<b>Willingham Green</b>	Long Road/Hills Road Netherhall Impington VC	Yes Yes Yes	Goldrider Goldrider Goldrider	Cambridge Regional College Long Road Sixth Form The Parkside Federation COWA, Milton	Yes Yes Yes Yes	Goldrider Goldrider Goldrider Goldrider
<b>Wimblington</b>	Neale Wade CC	No	–	COWA Isle	Yes	Standard
<b>Wimpole</b>	Long Road/Hills Road Netherhall Comberton VC	Yes Yes Yes	Standard Standard Goldrider	Cambridge Regional College Long Road Sixth Form The Parkside Federation COWA, Milton	Yes Yes Yes Yes	Goldrider Standard Standard Goldrider
<b>Winwick</b>	Sawtry CC	Yes	Standard	Huntingdon Regional College	Yes	Standard
<b>Wisbech</b>	Refer to Ed Transport	–	–	COWA Isle	Yes	Standard
<b>Wisbech St. Mary</b>	Refer to Ed Transport	–	–	COWA Isle	Yes	Standard
<b>Witcham</b>	City of Ely CC	Yes	Goldrider	Cambridge Regional College	Yes	Goldrider

Town/Village	As/A2 Level Base	Qualify for assistance	Ticket type	Vocational Base	Qualify for assistance	Ticket type
<b>Withersfield</b>	Contact Suffolk CC	N/A	N/A	Contact Suffolk CC	N/A	N/A
<b>Wittering</b>	Contact Peterborough CC	N/A	N/A	Contact Peterborough CC	N/A	N/A
<b>Wood Ditton</b>	Long Road/Hills Road Impington VC Newmarket College	Yes Yes Yes	Goldrider Goldrider Goldrider	Cambridge Regional College Long Road Sixth Form The Parkside Federation COWA, Milton	Yes Yes Yes Yes	Goldrider Goldrider Goldrider Goldrider
<b>Woodhurst</b>	Abbey College/St Ivo	Yes	Standard	Huntingdon Regional College	Yes	Standard
<b>Woodwalton</b>	St Peters School	Yes	Standard	Huntingdon Regional College	Yes	Standard
<b>Woolley</b>	Hinchingbrooke	Yes	Standard	Huntingdon Regional College	Yes	Standard
<b>Wothorpe</b>	Contact Peterborough CC	N/A	N/A	Contact Peterborough CC	N/A	N/A
<b>Wyton (On The Hill)</b>	St Peters School/ St Ivo School	Yes	Standard	Huntingdon Regional College	Yes	Goldrider
<b>Wyton (Village)</b>	St Peters School	Yes	Standard	Huntingdon Regional College	Yes	Goldrider
<b>Yaxley</b>	Stanground C Sawtry CC	Yes Contract Sawtry Directly	Standard	Peterborough Regional College	Yes	Standard
<b>Yelling</b>	Longsands CC	Yes	Standard	Huntingdon Regional College	Yes	Standard

## The tickets you may require:

### Goldrider (GR)

For all towns and villages where Stagecoach is the only bus operator, a Goldrider ticket is the only pass that can be purchased. A Goldrider ticket provides students with unlimited travel on any Stagecoach bus on the Stagecoach network within Cambridgeshire. A Goldrider ticket can be used during evenings and weekends, which is why there is a higher charge.

### Standard (ST)

A Standard ticket is required for travel on school bus routes contracted by Cambridgeshire County Council and commercial services not run by Stagecoach. (In a few cases students may require a Whippet and a Stagecoach pass in order to get to their post-16 centre. The charge for this will normally be at the standard rate.)

### Other

Stagecoach and Whippet Coaches operate services which cover Cambridge City and the surrounding villages where it is cheaper for students to purchase tickets directly from the operator (based on prices at the time of this booklet going to print.)

### Cambridge Regional College / Peterborough Regional College Buses

If you wish to travel on one of the buses organised by the Cambridge or Peterborough Regional Colleges you will need to apply direct to the respective college who will also inform you of their charges. If you are applying for free travel on benefit grounds you will need to complete the application form which can be found at the centre of this booklet and supply the requested supporting documentation (see section 4.)

### Rail

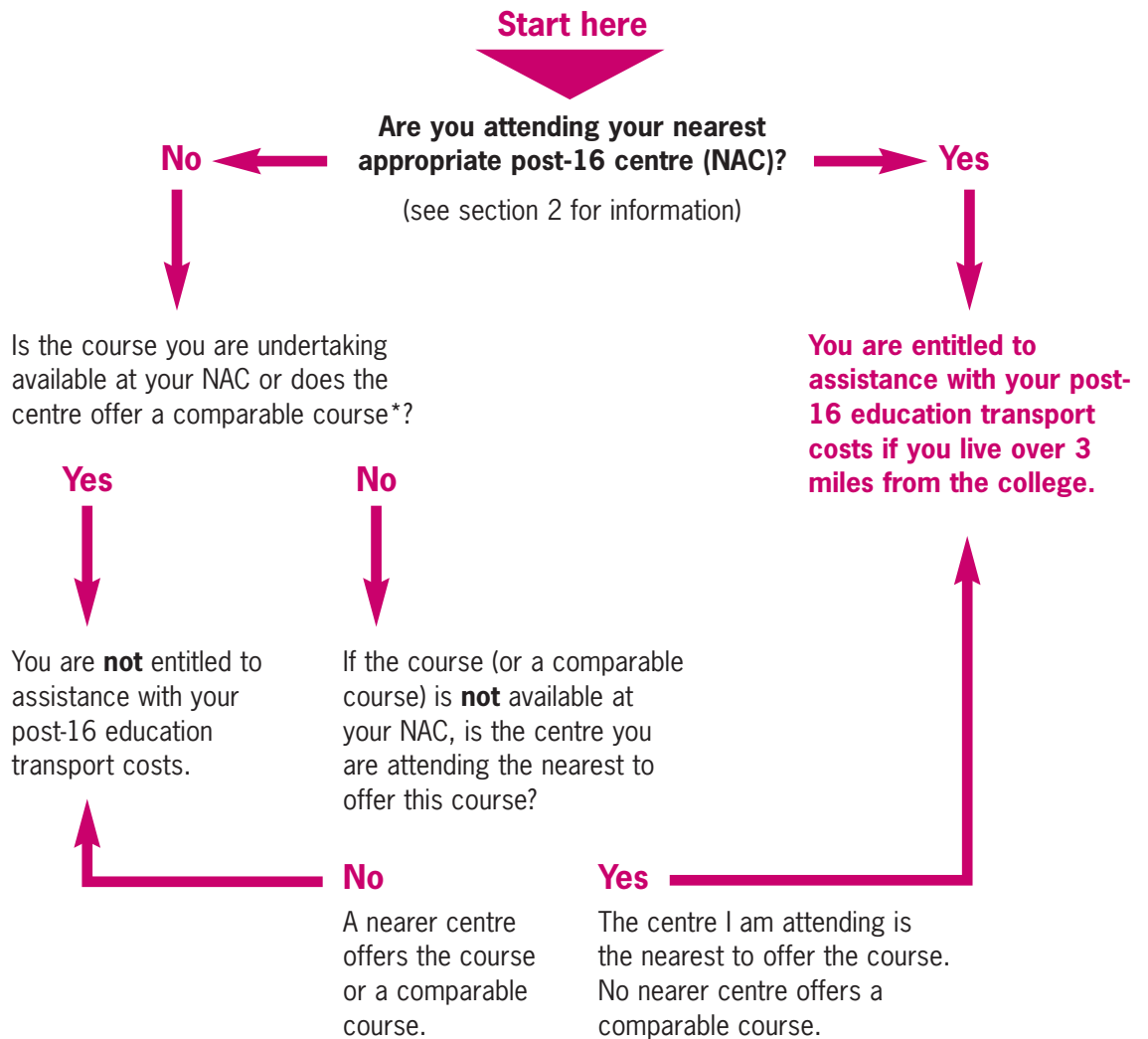
If you choose rail or rail is your only option, see section 6 for details on how to apply.

## 2.6 Entitlement Flowcharts

These flowcharts should help you determine whether or not you are entitled to assistance with your post-16 education transport costs.

### Vocational Courses

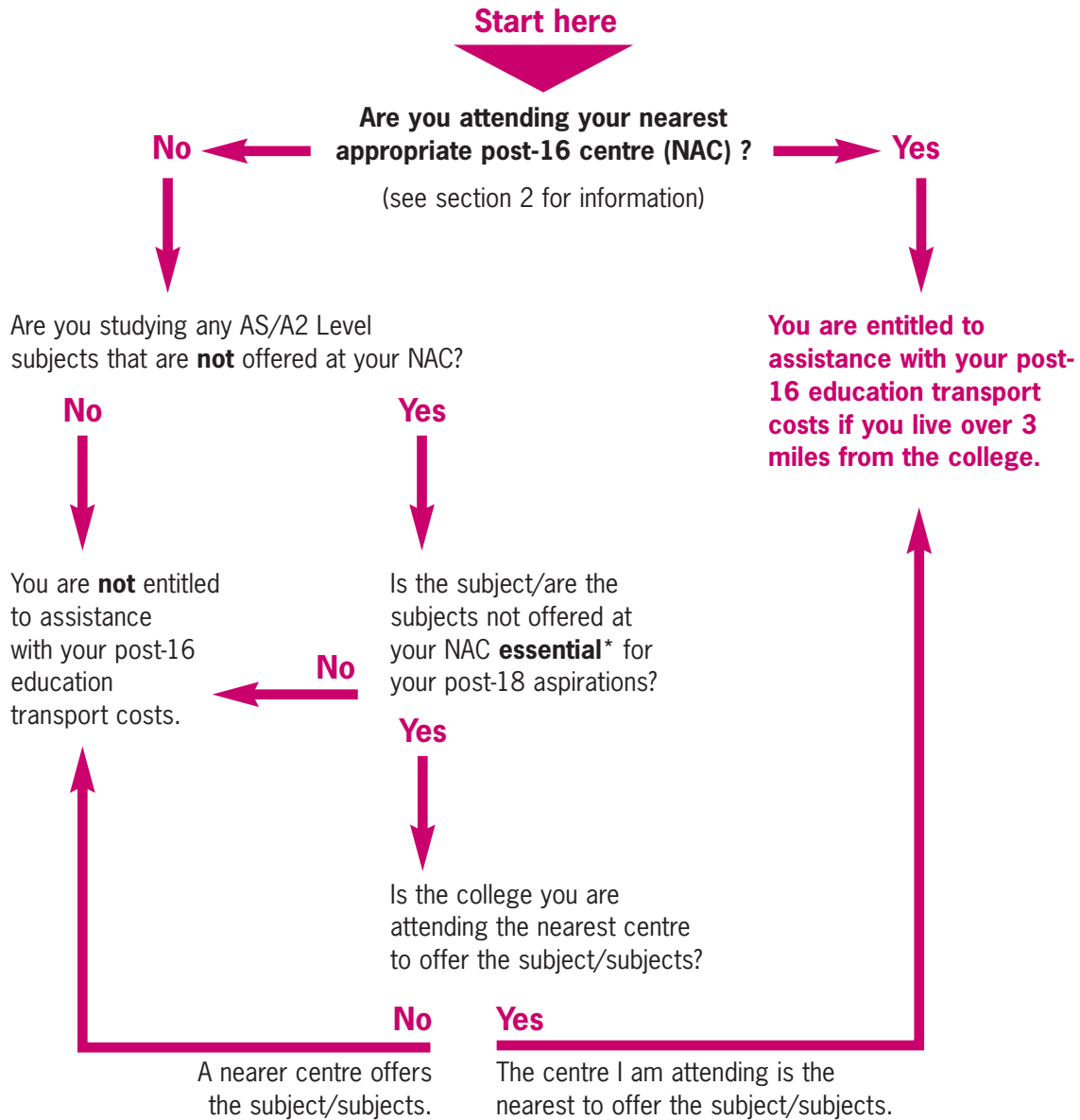
Use this chart if you are taking a vocational course e.g. BTEC National Diploma/ City & Guilds/ Diplomas/NVQ



\* A comparable course is a course that might not have the same title as the course you are undertaking, but offers the main essentials of the course, in terms of both type and level with regard to higher education and/or careers outcome.

## AS/A2 Levels

Use this chart if you are taking AS/A2 Level subjects.



\* For a subject to be classified as essential it must form part of the entry requirements for a degree course. For example, it is essential for a student to have A-Level Mathematics for entry onto a Mathematics degree. However, it is not essential for a student to have A-Level Psychology for entry onto a Psychology degree. A subject being listed as desirable is not the same as it being essential. Please note that a Local Authority officer will make the appropriate checks to confirm whether the subject/subjects are essential.

### 3 How much will I need to pay if I qualify for assistance?

**Goldrider Ticket** (for all travel on Stagecoach buses)

<b>Period</b>	<b>Journey type</b>	<b>Cost £</b>
Per year	Return	£600
Per term	Return	£200
Per half term	Return	£100

**Standard Ticket** (for travel on contracted routes and commercial services not operated by Stagecoach)

<b>Period</b>	<b>Journey type</b>	<b>Cost £</b>
Per year	Return	£450
	Single	£225
Per term	Return	£150
	Single	£75
Per half term	Return	£75
	Single	£37.50

Please note that we are unable to provide single journey tickets on any commercial route, for example on Stagecoach and Whippet Coaches.

If you have a pre-16 sibling at a denominational school or a post-16 sibling, who is paying a contribution to the LA towards the cost of school / college transport, you will only have to pay one charge per family, at the relevant post-16 rate.

## 4 Do I qualify for free transport?

### 4.1 Benefits

In order to qualify for free transport you must meet ALL of the criteria set out in Sections 1 and 2 and be claiming or have parents who are claiming one of the following:

- Income Support
- Income Based Job Seekers Allowance
- Income Related Employment and Support Allowance (this benefit was introduced from 27 October 2008)
- Support under Part VI of the Immigration & Asylum Act 1999
- Guarantee element of State Pension Credit
- NHS Tax Exemption certificate (issued to families receiving Child Tax Credit (CTC) or Working Family Tax Credit (WFTC). We require a copy of either your CTC or WFTC award notice valid for the date you are applying for transport (not the NHS certificate) including ALL pages of the notice.

**Please do not send original documents as we are unable to return these to you.**

Please note the maximum income limit per household which would qualify you for free transport is currently £16,190. This is subject to change for 2011/2012 please refer to our website [www.cambridgeshire.gov.uk/education/transport](http://www.cambridgeshire.gov.uk/education/transport) for up to date information.

You must supply photocopies of ALL pages of your award notice to enable us to assess your entitlement to free transport, including full details of your income.

### 4.2 Looked after children

If you are a Looked after Child (LAC) under the care of the LA you will be eligible for free transport if you are attending your nearest appropriate post-16 centre. Proof of status will be required in the form of a letter on headed paper from your Social Worker.

### 4.3 Students with a visual impairment

Students who are blind or have a visual impairment are entitled to free travel on public buses. Where public transport is not available the LA may provide free transport if a student is attending their nearest appropriate post-16 centre and that centre is less than three miles from the student's home address. Please contact 01223 699790 for further details.

## 5 If I do not qualify for help with post-16 transport costs, can I pay to travel on the school or college bus?

Students who do not meet the conditions set out in Sections 1 and 2 or 4 may be able to pay to travel on buses contracted to the County Council where spare seats are available at a cost of £150 per term (return) or £75 per half-term (return). The following terms and conditions apply

- Tickets are issued strictly on a first come, first served basis and can only be agreed on a termly basis.
- The allocation of a ticket for one term does not guarantee a ticket for subsequent terms. Pre-payment for more than one term in the expectation this will secure a place in the future will not be accepted. Cheques to this effect will be returned.
- Cambridgeshire County Council cannot guarantee to give advance warning of seats that are no longer available
- The spare seat pass is not available for use on public services buses provided by commercial operators. In this case you should apply to the bus company directly for a season ticket.
- Applications will be considered after the start of the half-term holiday immediately preceding the term for which the application is being made. The earliest dates you can apply for a spare seat for each term are

<b>Term</b>	<b>Date</b>
Autumn	27 May 2011
Spring	24 October 2011
Summer	12 February 2011

# 6 Rail Travel

## 6.1 Discounted season tickets from rail operators

Rail operators First Capital Connect and National Express East Anglia make available to students attending a Cambridgeshire post-16 centre a 50% discount on selected routes (see map). Students need to be under 19 years of age and in full time education to be eligible for the discount. Terms and conditions apply; see the operators' websites for details.

## 6.2 Apply direct to purchase discounted season tickets

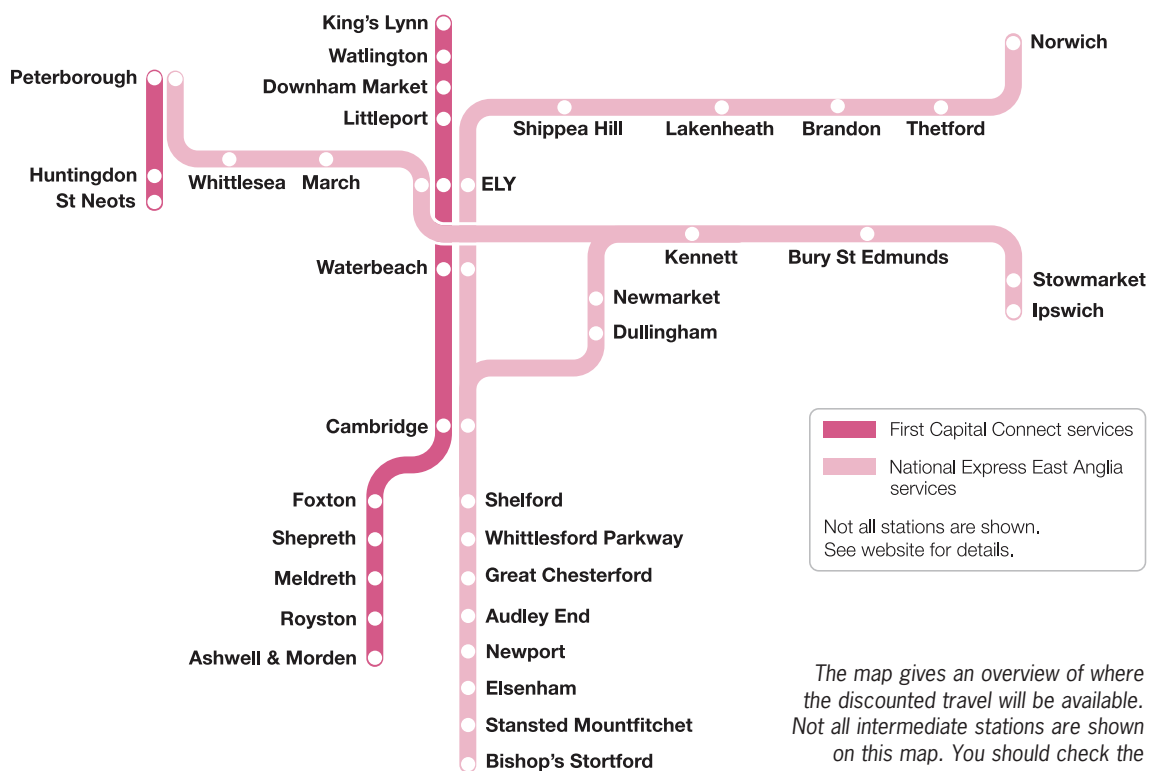
Visit [www.firstcapitalconnect.co.uk/cambridgeschools](http://www.firstcapitalconnect.co.uk/cambridgeschools) to register for your Student Connect Railcard where you will need to upload a passport size photograph. Your Student Connect Railcard will be sent to you separately. Once you have received your Student Connect Railcard you will need to revisit the website to purchase your discounted season ticket online. Please note the discount will not be shown until you reach the final step and make payment.

## 6.3 Exceptions to purchasing direct from rail operators

If you qualify under Section 4 for free travel\* we will order the rail pass and arrange for it to be sent to your home address. You will, however, need to apply for a Student Connect Railcard as explained above. When you receive the railcard complete the rail section on the application form stating your railcard number in the space provided. Remember to include evidence of your benefit documents, and send all the documentation to the LA who will then order your rail pass for you.

*\*Exceptions are granted on income grounds, or under the family criteria where you have a post-16 sibling or a sibling at a denominational school who is paying a contribution toward the cost of school / college transport.*

**Please note:** Students who deal directly with First Capital Connect or National Express East Anglia should raise any queries about their rail pass or railcard with the relevant rail operator – not Cambridgeshire County Council.



# 7 How do I apply for post-16 transport?

To apply for post-16 transport you need to complete the application form in the centre of this booklet and include the following.

- A passport sized photo (with your name clearly written on the back) as it is a requirement that all post-16 students' passes display a current photograph.
- A signed cheque or postal order for the correct amount made payable to Cambridgeshire County Council (if applicable).
- A full copy of all your benefit documents (if applicable). Please note we cannot return original documents.
- If you have been refused a place at your nearest appropriate post-16 centre, please also include a copy of your refusal letter.

## 7.1 **Please note an incomplete or incorrect application will result in the application being rejected and the form being returned.**

## 7.2 **Periods of peak demand**

During the months of July, August and September we handle a high volume of telephone calls and e-mails. Consequently please allow three working days for a response to phone messages and up to 10 days for a response to e-mails.

We will normally issue your pass before the start of term or within 10 working days of receiving your application, depending on date of receipt. It may not be possible to process your application within this timescale during periods of peak demand. If you have started your course and meet the entitlement criteria, the LA will only consider reimbursement of travel costs (incurred on the journey to and / or from college) if receipts / tickets are provided.

## 7.3 **Please note the 10 working days to issue passes commences on the date that we receive ALL of the necessary information / documentation required to process applications.**

## 8 Important additional information

### The Cambridge Area Partnership (CAP)

Please note that students who began 2-year courses in September 2010 and were eligible for transport assistance under the original criteria will continue to receive transport support to enable them to complete their course of study, provided that their circumstances (e.g. address, course) have not changed.

### Denominational Transport

The LA does not provide transport for post-16 students attending denominational post-16 centres on faith grounds. A student will only receive assistance with transport costs to a denominational post-16 centre if it is the student's nearest appropriate centre.

Please note St Bede's Inter-Church Comprehensive School does not have a defined catchment area. If you are or were attending Year 11 at St Bede's this does not guarantee assistance with transport costs. Your home address will determine your nearest appropriate centre.

### Ticket renewals

We do not issue reminders to students who are applying half-termly or termly. Consequently it is your responsibility to ensure you apply on time for the start of each half-term / term.

### Transport assistance

Transport assistance is not provided by the LA if you are enrolled on any of the following –

- Degree
- Higher National Certificate
- Higher National Diploma (HND)
- Modern Apprenticeship
- NVQ 4/5
- Worked Based Learning
- Youth Training Scheme

### Code of Conduct

A student who fails to meet the standards set out in the Code of Conduct for home to school / college travel will receive an official warning about their conduct. Further breaches of the Code of Conduct, after a warning letter has been issued, will result in a student being banned from the transport for a set period. Where a ban has been issued, it will be the responsibility of the student or the student's parent / carer, to arrange transport to and from college for the period of the ban.

### Cycling Allowance

A termly allowance – currently £40 per term – may be payable to students who are entitled to free or subsidised transport but use a bicycle to travel to school / college. A separate "claim for cycling allowance" form needs to be completed at the end of each term. Forms are available from schools / colleges.

## Medical

If the student has a medical condition that affects their ability to walk and they live less than 3 miles from the nearest appropriate centre, they may qualify for assistance with the transport if:

- The student meets the criteria stated in Sections 1 and 2 ; and
- If, without the provision of transport, they would not be able to access their nearest appropriate centre.

Where applications are made under medical grounds the LA will seek a statement from the Consultant Community Paediatrician. It may take approximately 20 working days to process medical applications.

If transport support is granted on medical grounds the relevant termly charge is required (unless you meet low-income criteria). Please contact [post16transport@cambridgeshire.gov.uk](mailto:post16transport@cambridgeshire.gov.uk) or 01223 699790 for further details.

## 9 Frequently asked questions (FAQs)

### Q. What are the normal travel arrangements?

- A. The LA undertakes to provide a return journey for entitled students to and from school or college at the beginning and end of each school / college day at the most economical cost to the LA.

The LA operates a 'No Pass No Travel' policy. Students will be refused travel if they do not provide a valid pass upon request.

### Q. What must I do if I lose my bus pass?

- A. If you have lost your pass you can apply for a replacement at a cost of £7.50 via the Council's website [www.cambridgeshire.gov.uk/education/transport](http://www.cambridgeshire.gov.uk/education/transport) or by contacting the Social & Education Transport Team on 0345 045 5208.

Please note you will only be entitled to one replacement pass per term. If you lose your pass twice in the same term you will have to pay the full cost of a new pass.

### Q. What must I do if I lose my rail pass?

- A. If you have lost your rail pass you will need to contact the rail operator via their website using your account details to log on.

If your pass was issued by Cambridgeshire County Council you can apply for a replacement pass via the Council's website or by contacting the Social and Education Transport Team on 0345 045 5208. The replacement will cost between £10 and £20 depending on the rail operator.

Please note you will only be entitled to two replacement passes during the life of the pass. If you exceed that you will have to pay full cost for another pass.

### Q. Which LA do I apply to if I'm attending a post-16 centre within Cambridgeshire but live in another LA area?

- A. You should apply to your home LA for transport. Your home LA will have its own policy on post-16 transport and you will need to contact them to determine your eligibility. Contact details of neighbouring LAs are provided on the back page of this booklet.

### Q. What happens if I leave before I complete my course?

- A. If you withdraw from your post-16 studies at any stage, you must return your pass immediately to the Social & Education Transport Team. If the pass is returned

- Before half term, a refund will be issued for the term in question and any subsequent terms for which payment has been made.
- After half term, no refund will be issued for the term in question. Payments for subsequent terms will be refunded.

### Q. I have transferred to a new course at college. Am I still entitled to transport?

- A. Providing you are attending the nearest appropriate post-16 centre for the new course you have chosen, you will still be entitled to assistance with the transport costs. However if it is not your nearest centre, assistance with transport costs cannot be guaranteed.

### Q. Does the LA provide assistance with transport costs to independent centres?

- A. No

# Neighbouring Local Authorities

Bedford Borough Council	01234 228431
Central Bedfordshire Council	0300 300 8000
Essex County Council	0845 603 220
Hertfordshire County Council	01992 556765
Lincolnshire County Council	01522 782020
Norfolk County Council	03458 008003
Northamptonshire County Council	01604 364496
Peterborough City Council	01733 317455
Suffolk County Council & Mid Suffolk District Council	08456 066067

## Other useful contact details

<b>Traveline East Anglia</b>	0871 200 22 33 <a href="http://www.travelineeastanglia.co.uk">www.travelineeastanglia.co.uk</a>
<b>National Rail Enquiries</b>	08457 484 950 <a href="http://www.nationalrail.co.uk/times_fares">www.nationalrail.co.uk/times_fares</a>
<b>First Capital Connect</b>	<a href="http://www.firstcapitalconnect.co.uk/cambridgeschools">www.firstcapitalconnect.co.uk/cambridgeschools</a>
<b>National Express East Anglia</b>	<a href="http://www.nationalexpresseastanglia.com">www.nationalexpresseastanglia.com</a>

---

Social and Education Transport Team (SETT)  
Cambridgeshire County Council  
Box Number CC1301  
Castle Court  
Shire Hall  
Cambridge, CB3 0AP

Telephone: 0345 045 5208 (Monday-Saturday, 8am-8pm)  
Facsimile: 01223 475948  
Email: [edtransport@cambridgeshire.gov.uk](mailto:edtransport@cambridgeshire.gov.uk)  
[post16transport@cambridgeshire.gov.uk](mailto:post16transport@cambridgeshire.gov.uk)  
Website: [www.cambridgeshire.gov.uk/education/transport](http://www.cambridgeshire.gov.uk/education/transport)

If you would like a copy of this leaflet on audio cassette, Braille, large print or other languages, please contact the Social and Education Transport Team (SETT) on tel: **0345 045 52 08**