

PRIMARY AGE PUPILS IN CAMBRIDGESHIRE: 2008/2009 school year

KEY STAGE 2 NATIONAL CURRICULUM ASSESSMENT

These tasks and tests are taken at the end of Key Stage 2 by pupils aged 11+. The expected level of performance is Level 4.

KS2 ENGLISH TESTS

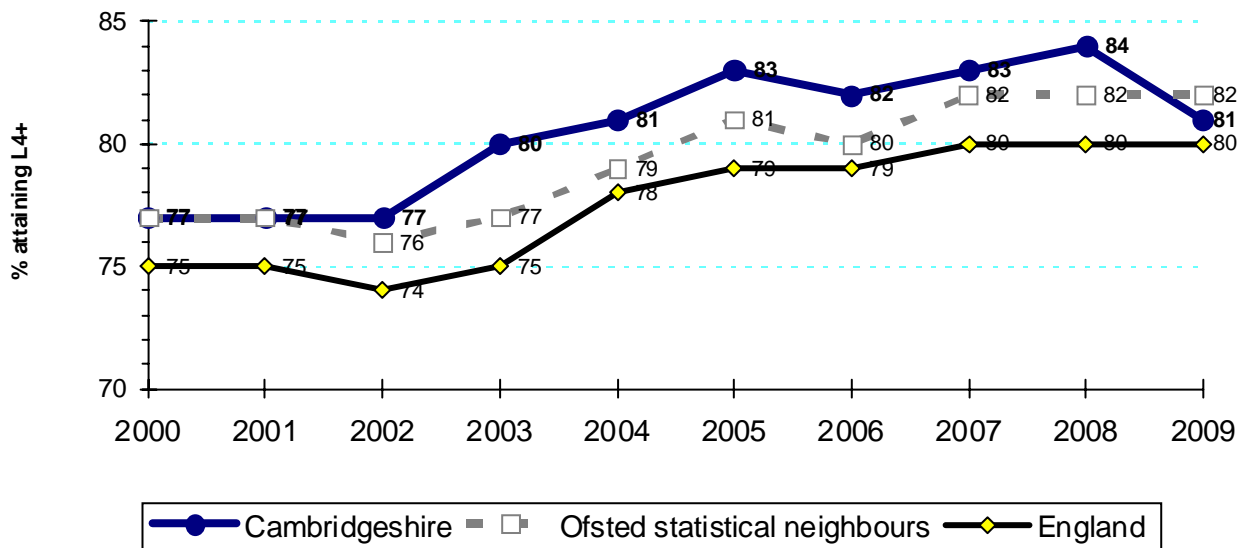
In 2009, 81% of pupils in Cambridgeshire achieved L4+ in English; one percentage point above the national average but one percentage point below the average for our statistical neighbours.

Proportion of pupils achieving Level 4 or above in the KS2 English test

School Yr Financial Year	Actuals					Targets*			
	04/05 05/06	05/06 06/07	06/07 07/08	07/08 08/09	08/09 09/10	05/06 06/07	06/07 07/08	07/08 08/09	08/09 09/10
	82	82	83	84	81	83	84	85	80

* The 2008/09 target is the more academically rigorous, percentage of pupils achieving L4+ in both Key Stage 2 English and Mathematics.

Comparative trends in performance: % L4+ in the KS2 English Test



The years on the graph show the year the test was taken (e.g. 2009= school year 2008/09, financial year 2009/10)
Source: Ofsted

PRIMARY AGE PUPILS IN CAMBRIDGESHIRE: 2008/2009 school year

KS2 MATHEMATICS TEST

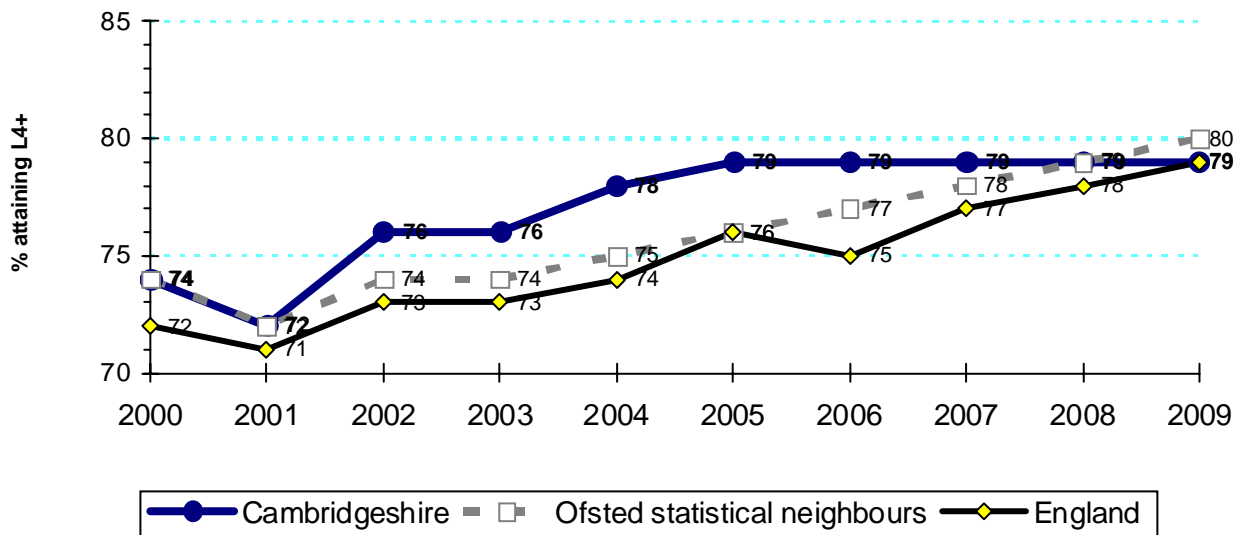
In 2009, 80% of pupils in Cambridgeshire achieved L4+ in Mathematics; in line with the national average but one percentage point below the average of our statistical neighbours.

Proportion of pupils achieving Level 4 or above in the KS2 Mathematics test

	Actuals					Targets*			
School Yr	04/05	05/06	06/07	07/08	08/09	05/06	06/07	07/08	08/09
Financial Year	05/06	06/07	07/08	08/09	09/10	06/07	07/08	08/09	09/10
	78	79	79	79	80	84	83	83	80

* The 2008/09 target is the more academically rigorous, percentage of pupils achieving L4+ in both Key Stage 2 English and Mathematics.

Comparative trends in performance: % L4+ in the KS2 Mathematics Test



PRIMARY AGE PUPILS IN CAMBRIDGESHIRE: 2008/2009 school year

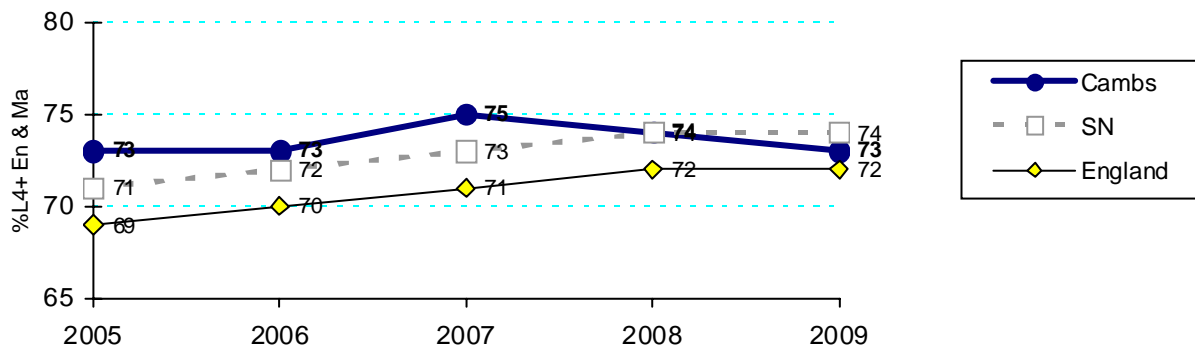
KS2 ENGLISH AND MATHS TESTS COMBINED

In 2009, 73% of pupils in Cambridgeshire achieved Level 4+ in both English and mathematics; one percentage point above the national average but one percentage point below the average for our statistical neighbours

Proportion of pupils achieving Level 4 or above in both the KS2 English and Mathematics tests

School Yr Financial Year	Actuals				Targets*			
	08/09 09/10	09/10 10/11	10/11 11/12		08/09 09/10	09/10 10/11	10/11 11/12	
	73				80	80	80	

% L4+ in BOTH the KS2 ENGLISH & MATHEMATICS Tests: Comparative trends (All pupils)

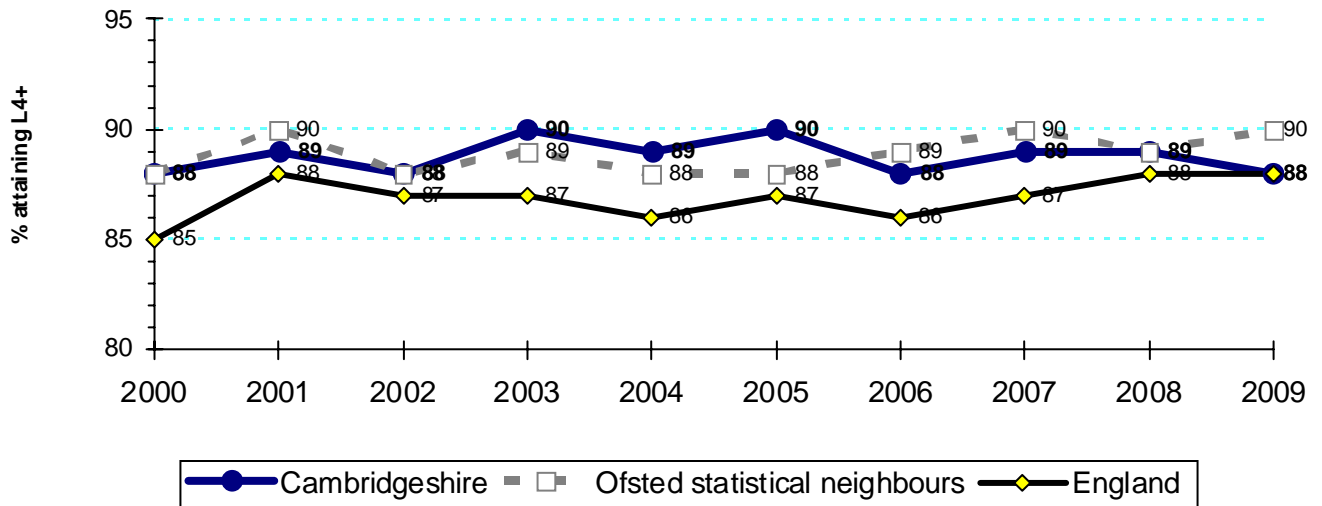


PRIMARY AGE PUPILS IN CAMBRIDGESHIRE: 2008/2009 school year

KS2 SCIENCE TESTS

In 2009, 88% of Cambridgeshire pupils achieved L4+ in Science; in line with the national average but two percentage points below the average for our statistical neighbours.

Comparative trends in performance: % L4+ in the KS2 Science Test



The years on the graph show the year the test was taken (e.g. 2009 = school year 2008/09, financial year 2009/10)