

ANNUAL PUPIL FORECASTS FOR CAMBRIDGESHIRE – January 2009

Research Group, Office of Corporate Services, July 2009

This report focuses on pupil numbers at maintained primary and secondary schools in Cambridgeshire. It does not include pupils in Nursery Classes, Nursery and Special Schools or the Pupil Referral Units.

1. INTRODUCTION AND SUMMARY OF TRENDS

This paper presents a summary of forecast pupil numbers across Cambridgeshire to 2018/19. These forecasts are calculated at local authority district level and can be expected to give a more accurate picture of overall trends than the aggregated individual school forecasts produced for finance or planning purposes. The main reason for this is that individual primary school forecasts have future additions for children moving into new housing developments but these children are not removed from the rolls of the primary schools they have left elsewhere within the authority (since these cannot be identified in advance). On the other hand, a single LA-wide forecast allows movement of children between schools in the area to cancel out. Like all forecasts, they represent the most likely trend within a range of possibilities.

The first section of this report presents a summary of forecast trends. A brief explanation of the forecasting methodology follows. The detailed figures behind the charts can be found in the Appendix. Pupil numbers for the 2008/09 school year are from the January 2009 School Census.

Primary pupil numbers (aged 4-10):

Figure 1 shows the actual and forecast number of primary aged pupils.

- Primary numbers in Cambridgeshire declined by around 90 pupils compared to last year and currently stand at around 42,820.
- The forecasts given here suggest numbers will remain around current levels for the next two years and then increase to around 49,200 in nine years' time.
- Trends in primary numbers broadly follow recent trends in births, at both local and national level. Births declined from a peak in the late 1980s to a low point at the beginning of this decade but have since recovered and are continuing to rise.
- This school year's primary reception year-group of around 6,200 is around 50 larger than last year; reception year-groups are forecast to continue to increase.

Figure 2 compares actual and forecast trends in primary aged pupils across Cambridgeshire's districts.

- Future trends will not be uniform across the county. In five years' time, total primary rolls are forecast to be around 8% higher than current numbers in the authority as a whole but about 15% higher in the City and 2% lower in Huntingdonshire.

Figure 1: Total Primary Forecasts

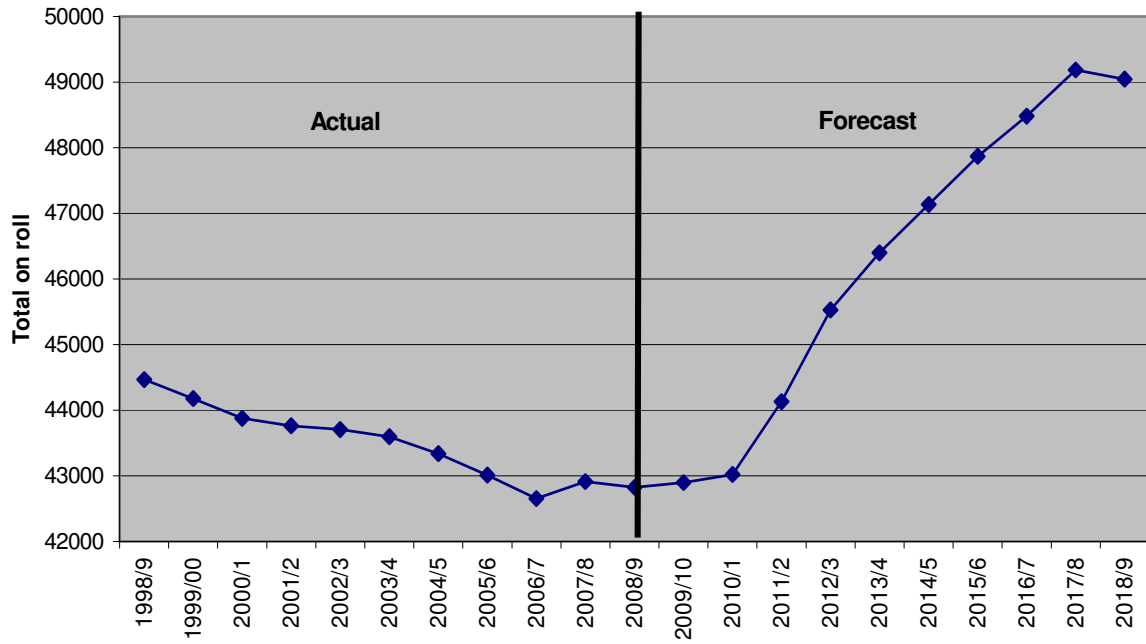
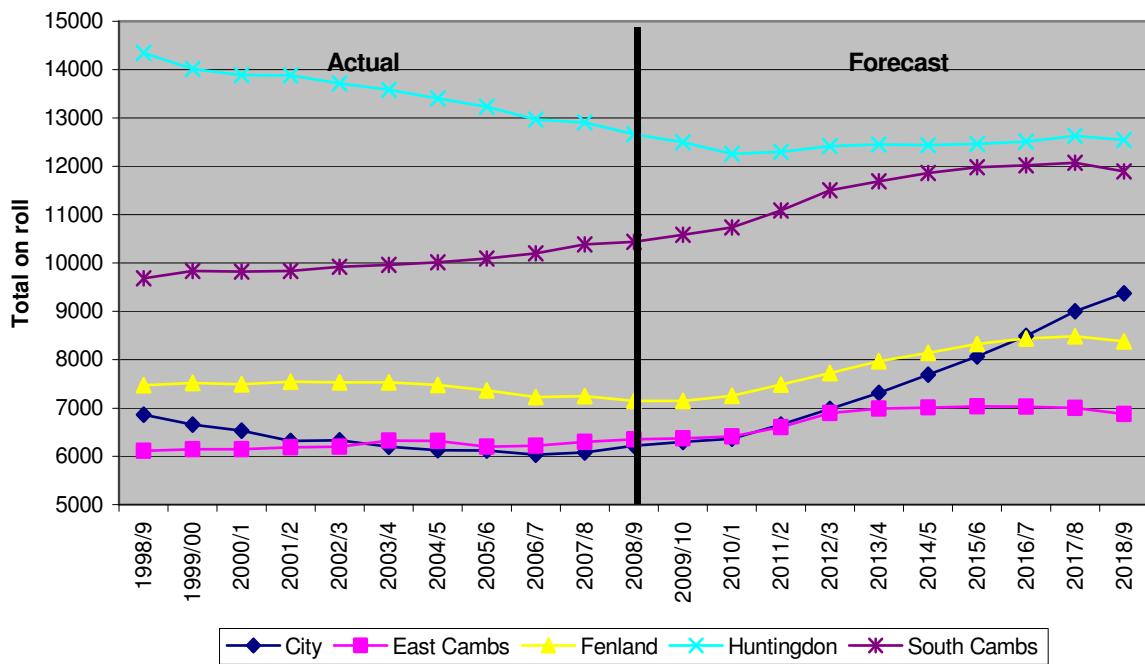


Figure 2: Total Forecast Primary Numbers by District



Secondary pupil numbers (11-17+):

Figure 3 shows the actual and forecast number of secondary aged pupils. Figure 4 compares trends across Cambridgeshire's districts.

- Secondary numbers in Cambridgeshire increased from last year's dip; they are around 32,840 at present, compared with 32,570 last year.
- Numbers are expected to increase next year and then settle around or a little below 33,000 for a few years then start to increase in 2016/17.
- These patterns are mainly influenced by the relative sizes of year-groups moving up from primary school.
- There will be variation across the county. Over the next five years, secondary rolls in the county as a whole are forecast to fall slightly but increase by 5% in South Cambridgeshire and fall by 8% in Huntingdonshire.

Figure 3: Total Secondary Forecast

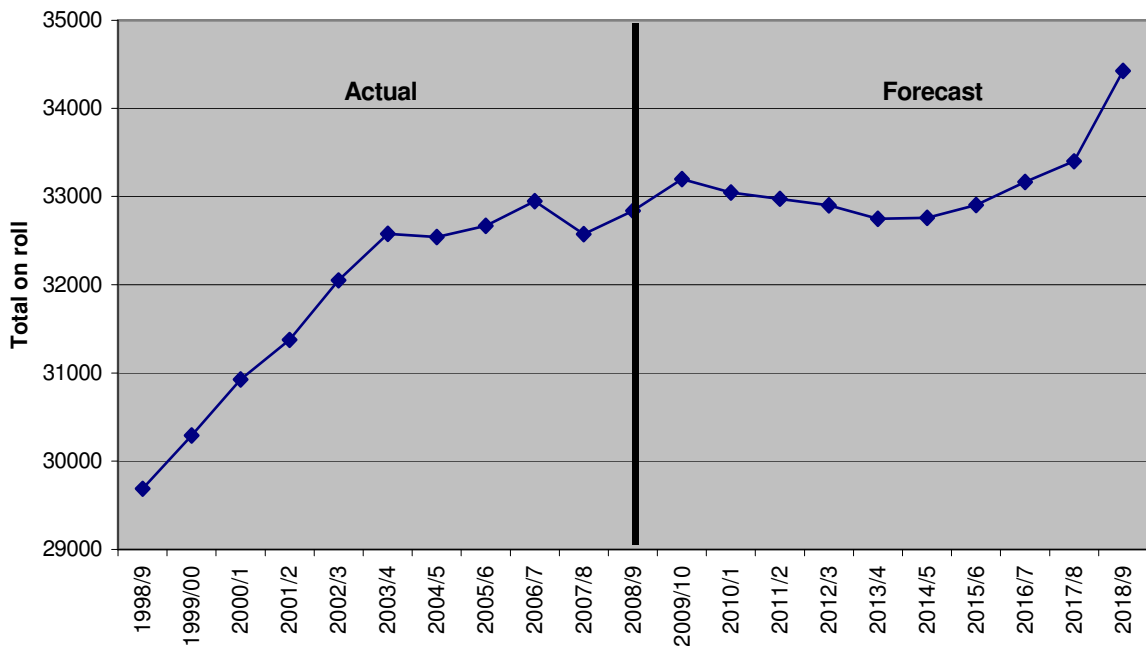
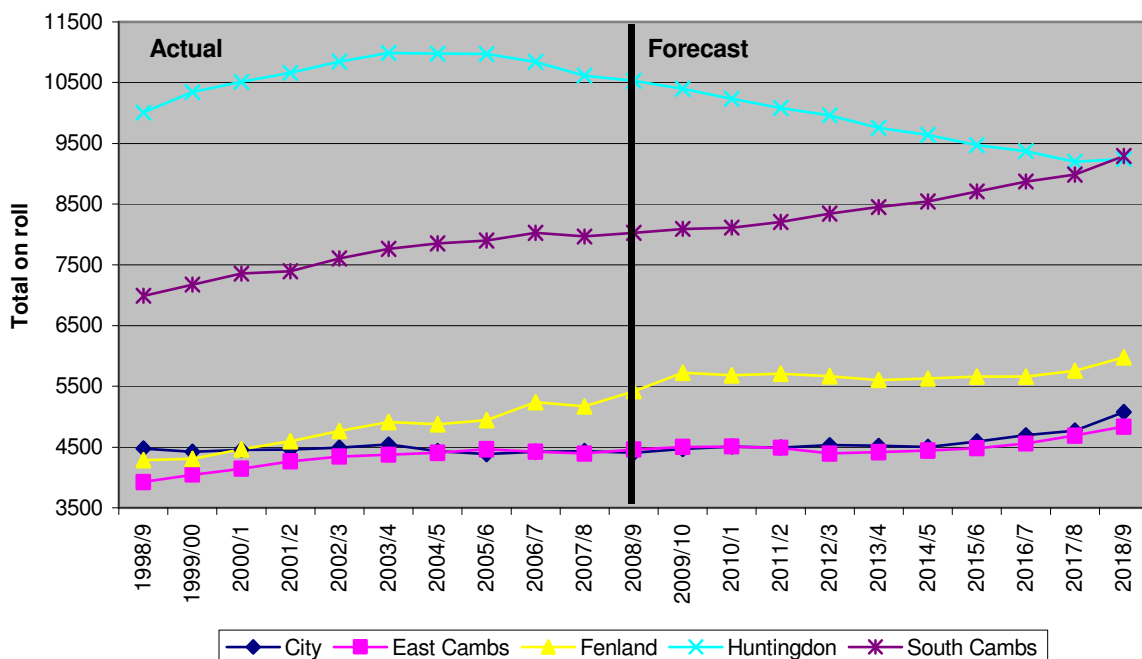


Figure 4: Total Forecast Secondary Numbers by District



2. FORECASTING METHODOLOGY & ASSUMPTIONS:

These forecasts are based on the assumption that recent trends - generally those in the past three years - will continue over the next ten years. It is possible that increased rates of house-building planned for the south of the county will push pupil numbers higher than given here by the end of the ten-year period. Similarly, if the birth rate continues to rise, pupil numbers could rise higher than given here. In detail, the assumptions used for the pupil forecasts are:

- 4 year-old pupils: Intake of 4 year-olds for the following year has been projected on the basis of the relationship over the last three years between the numbers of children aged 4 arriving at school and the numbers of births five years earlier - an average Arrival Rate of approximately 102%. Intakes for 2013/14 onward are based on forecast numbers of births taken from the Research Group's general population forecasts for the county.
- 5-10 year-old pupils: Projected on the basis of average change in the size of year-groups between 2006/07 and 2008/09 - an average annual net gain of 3 pupils by each year-group.
- 11 year-old pupils: Projected on the basis of the average proportion transferring from the top primary year-group to secondary school over the last three years - a transfer rate of 97%. The net loss of 3% on transfer mainly represents moves into the independent sector.
- 12-15 year-old pupils: Projected on the basis of average change in the size of year-groups between 2006/07 and 2008/09 - an average annual net loss of 9 pupils by each year-group.
- 16 year-old pupils: Projected on the basis of the assumption that the staying-on rate into maintained sixth forms across the whole area remains at this year's average level of around 28%. This is a relatively low figure because the two Cambridge sixth form colleges are excluded from these forecasts. In Huntingdonshire, the only part of the county where all secondary schools have sixth forms, the staying-on rate within the maintained sector was 51% this year.
- 17 year-old pupils: Projected on the basis of the proportion of 16 year-old pupils staying on into the upper sixth this year - a staying-on rate of 100%. This is higher than last year due to Cromwell opening a sixth form college in September 2008 and Thomas Clarkson's new sixth form, which is due to open in September 2010.

Appendix

Table 1: Primary Pupil Numbers (aged 4-10) including Gamlingay Middle School 9 & 10 year-olds

School Year	Age:							Primary Total
	4	5	6	7	8	9	10	
1998/9	6,317	6,227	6,545	6,407	6,374	6,267	6,236	44,465
1999/00	6,168	6,383	6,170	6,428	6,442	6,255	6,246	44,175
2000/1	5,982	6,230	6,390	6,157	6,415	6,338	6,270	43,878
2001/2	6,168	6,086	6,212	6,342	6,164	6,352	6,341	43,763
2002/3	6,141	6,285	6,142	6,186	6,382	6,103	6,370	43,705
2003/4	6,087	6,247	6,323	6,109	6,238	6,303	6,185	43,594
2004/5	5,924	6,122	6,255	6,270	6,122	6,188	6,352	43,335
2005/6	5,999	6,011	6,167	6,235	6,264	6,014	6,222	43,012
2006/7	5,874	6,017	6,015	6,150	6,248	6,202	6,036	42,653
2007/8	6,149	5,981	6,063	5,991	6,155	6,215	6,244	42,912
2008/9	6,202	6,217	6,006	5,998	5,988	6,035	6,253	42,822
	Forecast							
2009/10	6,304	6,266	6,241	5,970	6,002	5,916	6,070	42,895
2010/11	6,188	6,368	6,290	6,205	5,974	5,930	5,951	43,020
2011/12	7,041	6,252	6,392	6,254	6,209	5,902	5,965	44,129
2012/13	7,349	7,105	6,276	6,356	6,258	6,137	5,937	45,529
2013/14	6,798	7,413	7,129	6,240	6,360	6,186	6,172	46,397
2014/15	6,886	6,862	7,437	7,093	6,244	6,288	6,221	47,136
2015/16	6,926	6,950	6,886	7,401	7,097	6,172	6,323	47,872
2016/17	6,921	6,990	6,974	6,850	7,405	7,025	6,207	48,483
2017/18	6,893	6,985	7,014	6,938	6,854	7,333	7,060	49,188
2018/19	6,891	6,957	7,009	6,978	6,942	6,782	7,368	49,048

Table 2: Secondary Pupil Numbers (11-16+)

School Year	Age:									Total
	11	12	13	14	15	16	17	11-15	16+	
1998/9	5,716	5,542	5,546	5,262	5,246	1,287	1,087	27,312	2,374	29,686
1999/00	5,950	5,731	5,500	5,528	5,222	1,249	1,111	27,931	2,360	30,291
2000/1	5,942	5,973	5,713	5,435	5,483	1,276	1,106	28,546	2,382	30,928
2001/2	5,957	5,969	5,928	5,692	5,421	1,318	1,090	28,967	2,408	31,375
2002/3	6,070	5,981	5,942	5,945	5,599	1,362	1,151	29,537	2,513	32,050
2003/4	6,119	6,136	5,966	5,978	5,878	1,335	1,163	30,077	2,498	32,575
2004/5	5,905	6,157	6,093	5,993	5,863	1,403	1,130	30,011	2,533	32,544
2005/6	6,109	5,901	6,111	6,074	5,805	1,414	1,252	30,000	2,666	32,666
2006/7	5,933	6,129	5,899	6,106	6,072	1,462	1,348	30,139	2,810	32,949
2007/8	5,785	5,980	6,118	5,925	5,997	1,495	1,272	29,805	2,767	32,572
2008/9	5,986	5,853	5,951	6,104	5,831	1,670	1,444	29,725	3,114	32,839
	Forecast									
2009/10	6,056	6,031	5,839	5,954	6,036	1,597	1,684	29,916	3,281	33,197
2010/11	5,884	6,101	6,017	5,842	5,886	1,696	1,621	29,730	3,317	33,047
2011/12	5,776	5,929	6,087	6,020	5,774	1,647	1,740	29,586	3,387	32,973
2012/13	5,781	5,821	5,915	6,090	5,952	1,634	1,707	29,559	3,341	32,900
2013/14	5,780	5,826	5,807	5,918	6,022	1,706	1,688	29,353	3,394	32,747
2014/15	5,988	5,825	5,812	5,810	5,850	1,713	1,760	29,285	3,473	32,758
2015/16	6,045	6,033	5,811	5,815	5,742	1,661	1,796	29,446	3,457	32,903
2016/17	6,146	6,090	6,019	5,814	5,747	1,616	1,731	29,816	3,347	33,163
2017/18	6,041	6,191	6,076	6,022	5,746	1,622	1,700	30,076	3,322	33,398
2018/19	6,855	6,086	6,177	6,079	5,954	1,574	1,697	31,151	3,271	34,422

**Table 3: Cambridgeshire – Summary of actual and projected pupil numbers – January
2009 base**

School Year	Primary Total	11-15	16+	Secondary Total	Total Pupils
2003/4	43,594	30,077	2,498	32,575	76,169
2004/5	43,335	30,011	2,533	32,544	75,879
2005/6	43,012	30,000	2,666	32,666	75,678
2006/7	42,653	30,139	2,810	32,949	75,602
2007/8	42,912	29,805	2,767	32,572	75,484
2008/9	42,822	29,725	3,114	32,839	75,661
	Forecast				
2009/10	42,895	29,916	3,281	33,197	76,092
2010/11	43,020	29,730	3,317	33,047	76,067
2011/12	44,129	29,586	3,387	32,973	77,102
2012/13	45,529	29,559	3,341	32,900	78,429
2013/14	46,397	29,353	3,394	32,747	79,144
2014/15	47,136	29,285	3,473	32,758	79,894
2015/16	47,872	29,446	3,457	32,903	80,775
2016/17	48,483	29,816	3,347	33,163	81,646
2017/18	49,188	30,076	3,322	33,398	82,586
2018/19	49,048	31,151	3,271	34,422	83,470