

ALL ABOUT
PRIMARY
PUPILS
IN
CAMBRIDGESHIRE
2007-2008

CONTENTS

| | Page |
|--|-------------|
| Schools in Cambridgeshire | 2 |
| Pupil numbers in Cambridgeshire | 3 |
| Pupils in each school sector | 4 |
| Pupils in each Cambridgeshire District | 4 |
| Trends in primary age pupils in Cambridgeshire | 5 |
| Primary pupils from minority ethnic backgrounds | 6 |
| Eligibility for a free school meal | 8 |
| Primary pupils with a special educational need | 9 |
| Teaching staff in primary schools | 10 |
| Primary class sizes | 12 |
| Primary Pupil Teacher Ratios | 13 |
| Pupil attendance | 14 |
| Exclusions from primary schools | 16 |
| Foundation Stage Profile | 17 |
| Attainment in Key Stage 1 assessments | 19 |
| Attainment in Key Stage 2 SATs | 22 |

SCHOOLS IN CAMBRIDGESHIRE

In Cambridgeshire in January 2008 there were:

6 NURSERY SCHOOLS

4 in Cambridge City; 1 in Huntingdonshire; 1 in South Cambridgeshire

200 PRIMARY SCHOOLS

24 in Cambridge City; 27 in East Cambridgeshire; 33 in Fenland; 61 in Huntingdonshire; 55 in South Cambridgeshire

149 All-through primary; 11 Infant schools; 16 Junior schools; 2 First schools; 22 Schools with designated Nursery Classes

30 SECONDARY SCHOOLS

6 in Cambridge City; 4 in East Cambridgeshire; 4 in Fenland; 7 in Huntingdonshire; 9 in South Cambridgeshire

1 9-12 Middle school; 17 11-16 schools; 12 11-18 schools

7 SPECIAL SCHOOLS

1 in Cambridge City; 2 in East Cambridgeshire; 1 in Fenland; 2 in Huntingdonshire; 1 in South Cambridgeshire

6 PUPIL REFERRAL UNITS

3 in Cambridge City; 1 in East Cambridgeshire; 1 in Fenland; 1 in Huntingdonshire

For more information on schools in Cambridgeshire click on:
<http://www.cambridgeshire.gov.uk/education/schools/>

PRIMARY AGE PUPILS IN CAMBRIDGESHIRE: 2007/2008 school year



PUPIL NUMBERS IN CAMBRIDGESHIRE

In January 2008 there were 77,808 children on roll in schools maintained by Cambridgeshire County Council. This is a headcount total. If children who attend part-time are counted as 0.5, the 'full-time equivalent' (fte) total is 77,010 pupils.

The table below shows that there are approximately 6,000 full-time equivalent pupils in each age-group cohort between 4+ and 15+, the years of compulsory education, with larger groups in the primary years between 5+ and 10+. The table shows how these age groups relate to National Curriculum year groups and Key Stages.

Age & year groups (full-time equivalent):

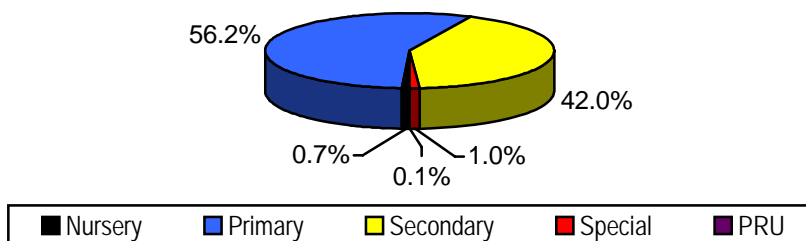
| Phase | Nursery | | ←←←←←Primary→→→→→ | | | | | | | ←←←←Secondary→→→→→ | | | | ←Sixth Form→ | | |
|-----------|---------|-----|-------------------|---------------|------|----------------------|------|--------|-------------------|--------------------|------|---------------|------|--------------|------|---------|
| Key Stage | | | | ←Key Stage 1→ | | ←←←←Key Stage 2→→→→→ | | | ←←←Key Stage 3→→→ | | | ←Key stage 4→ | | ←Post-16→ | | |
| Years | N1 | N2 | R | 1 | 2 | 3 | 4 | 5 | 6 | 7 | 8 | 9 | 10 | 11 | 12 | 13 |
| Ages | Under 3 | 3 | 4 | 5 | 6 | 7 | 8 | 9 | 10 | 11 | 12 | 13 | 14 | 15 | 16 | Over 17 |
| | 88 | 709 | 6163.5 | 6001 | 6078 | 6024 | 6196 | 6319.5 | 6344 | 5897 | 6060 | 6196 | 5996 | 6041 | 1561 | 1337 |

This table **does not include**:

- Pre-school children at Nurseries or Playgroups in Cambridgeshire maintained by providers other than Cambridgeshire County Council
- Pupils at Independent Schools in Cambridgeshire
- Cambridgeshire pupils attending residential Special Schools in other counties
- Post 16 students at Hills Road Sixth Form College, Long Road Sixth Form College or FE Colleges in Cambridgeshire

PRIMARY AGE PUPILS IN CAMBRIDGESHIRE: 2007/2008 school year

PUPILS IN EACH SCHOOL SECTOR

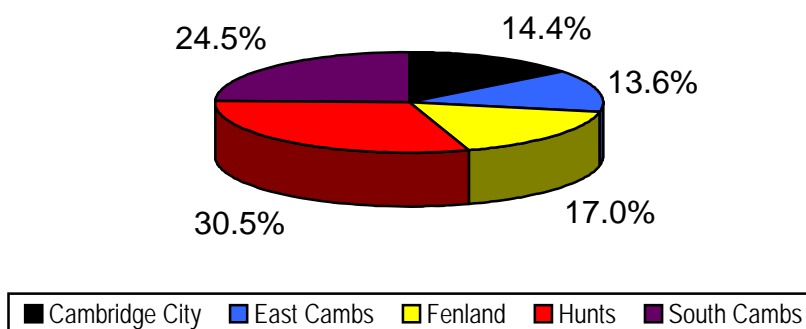


In January 2008 there were 77,010 full-time equivalent pupils (77,808 headcount) in 249 maintained schools in Cambridgeshire:

- 560 (0.72% total) in nursery schools or nursery classes
- 43,793 (56.2% total) in primary schools, excluding nursery classes
- 32,689 (42.0% total) in secondary and middle schools
- 766 (1.0% total) in special schools.
- 50 (0.1% total) at the Pupil Referral Units, excluding pupils dually registered at both a Unit and a school

These totals do not include children who live in Cambridgeshire and attend schools elsewhere

PRIMARY PUPILS IN EACH CAMBRIDGESHIRE DISTRICT



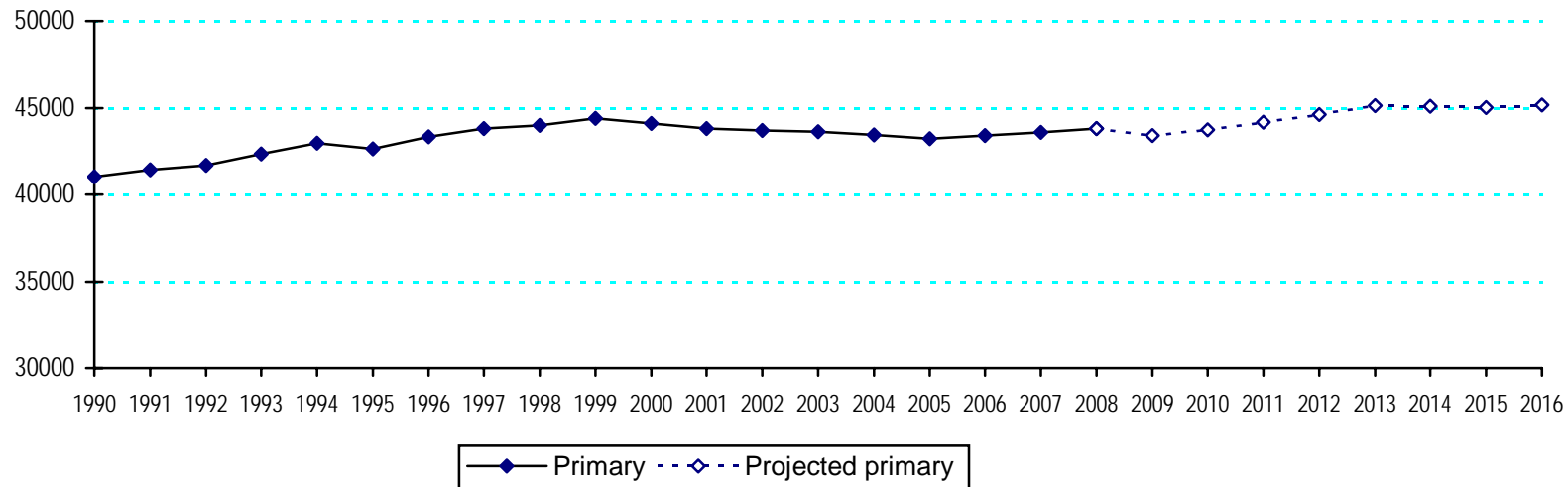
In January 2008 there were 43277 full-time equivalent primary aged pupils (43793 headcount) across 5 Districts of Cambridgeshire:

- 6250.5 (14.4% total) in Cambridge City
- 5889.5 (13.5% total) in East Cambridgeshire
- 7353 (17.1% total) in Fenland
- 13200 (30.7% total) in Huntingdonshire
- 10584 (24.2% total) in South Cambridgeshire

These totals do not include children who live in Cambridgeshire and attend schools elsewhere

PRIMARY AGE PUPILS IN CAMBRIDGESHIRE: 2007/2008 school year

TRENDS IN PRIMARY AGE PUPIL NUMBERS IN CAMBRIDGESHIRE



Growth in primary numbers slowed in the later 1990s followed by a slow fall. Forecasts show a gradual increase over the next few years, but this pattern will not be uniform across the county. In five years time total primary numbers are forecast to be 3% higher than current numbers across Cambridgeshire as a whole, but around 10% higher than current numbers in East Cambridgeshire and 5% lower in Huntingdonshire.

Note that primary forecasts after 2012 are based on birthrate *projections* and are liable to change.

Further information is available from this weblink:

<http://www.cambridgeshire.gov.uk/education/about/statistics/>

PRIMARY AGE PUPILS IN CAMBRIDGESHIRE: 2007/2008 school year

PUPILS FROM MINORITY ETHNIC BACKGROUNDS

The DfES expects that all pupils, or their parents/carers on their behalf, will provide schools with information on their ethnicity. This enables schools and LAs to ensure that appropriate provision is made to support pupils who may be underachieving or experiencing problems as a result of their particular ethnic heritage.

Cambridgeshire CC uses the ethnic categories from the 2001 Census for this monitoring, with the addition of specific categories for Gypsy/Roma and Irish Travellers. Pupils and parents have the right not to provide the information, and in January 2008 1.0% chose to exercise that right.

Ethnic minority communities within Cambridgeshire: % primary pupils on roll January 2008

| | White | Mixed | Asian | Black | Chinese | No data |
|----------------|-------|-------|-------|-------|---------|---------|
| Cambridgeshire | 90.7 | 3.3 | 2.9 | 0.7 | 0.5 | 1.0 |
| England | 80.0 | 3.9 | 8.7 | 4.7 | 0.3 | 0.3 |

In January 2008 7.9% of pupils in Cambridgeshire primary schools were from a minority ethnic community, below the national rate of 17.6%. The largest groups were: Travellers (0.8%); Indian (0.9%); Bangladeshi (0.7%); Chinese (0.5%); Black African (0.4%) and Pakistani (0.4%).

Within Cambridge City, 21.7% of primary pupils have a minority ethnic heritage, above the national rate of 17.6%. There is a large Bangladeshi community – 4% of all primary pupils on roll – and strong Indian, Black African, Chinese and Traveller communities alongside smaller groups from across the world. Outside Cambridge there are sizeable communities of Pakistanis in Huntingdon and St Ives; and of Travellers across Fenland and South Cambridgeshire.

Ethnic monitoring information is providing evidence of under-performance in the end of Key Stage National Curriculum Tests by pupils from Bangladeshi, Traveller, Pakistani and Black Caribbean heritage groups. There is also some evidence of over-representation in areas associated with behavioural problems by Black Caribbean and Traveller pupils.

Cambridgeshire County Council is committed to eliminating such disparities arising from ethnic or racial background, and the Cambridgeshire Race Equality & Diversity Service (CREDS) works to support schools and community groups. For further information on the work of CREDS, see

<http://www.cambridgeshire.gov.uk/education/about/services/creds.htm>

PRIMARY AGE PUPILS IN CAMBRIDGESHIRE: 2007/2008 school year

Ethnic minority communities within Cambridgeshire: % pupils on roll January 2008

| | Cambridge City | East Cambs | Fenland | Hunts | South Cambs | Cambridgeshire | England |
|-------------------------------------|----------------|-------------|-------------|-------------|-------------|----------------|-------------|
| White: BRITISH | 63.6 | 88.4 | 90.6 | 88.9 | 86.2 | 84.8 | 75.8 |
| White: IRISH | 0.7 | 0.1 | 0.1 | 0.2 | 0.4 | 0.3 | 0.4 |
| White: IRISH TRAVELLER | 0.2 | 0.1 | 0.0 | 0.1 | 0.4 | 0.2 | 0.1 |
| White: GYPSY / ROMA | 1.1 | 0.4 | 0.8 | 0.4 | 0.4 | 0.6 | 0.2 |
| White: other groups | 10.9 | 4.8 | 3.8 | 3.1 | 4.4 | 4.9 | 3.5 |
| Total: White | 76.5 | 93.8 | 95.3 | 92.7 | 91.8 | 90.8 | 80.0 |
| MIXED: White/Black Caribbean | 1.7 | 0.1 | 0.5 | 0.6 | 0.4 | 0.6 | 1.3 |
| MIXED: White/Black African | 1.0 | 0.2 | 0.2 | 0.4 | 0.4 | 0.4 | 0.4 |
| MIXED: White/Asian | 1.8 | 0.7 | 0.5 | 0.6 | 1.0 | 0.9 | 0.8 |
| MIXED: White/Other | 2.5 | 1.5 | 0.8 | 1.1 | 1.5 | 1.4 | 1.4 |
| Total: Mixed heritage groups | 7.0 | 2.5 | 2.0 | 2.7 | 3.3 | 3.3 | 3.9 |
| Asian British: INDIAN | 2.1 | 0.4 | 0.4 | 0.4 | 1.3 | 0.9 | 2.4 |
| Asian British: PAKISTANI | 0.8 | 0.0 | 0.0 | 0.8 | 0.2 | 0.4 | 3.7 |
| Asian British: BANGLADESHI | 3.9 | 0.2 | 0.1 | 0.2 | 0.1 | 0.7 | 1.5 |
| Asian British: other groups | 2.7 | 0.3 | 0.4 | 0.7 | 0.6 | 0.9 | 1.1 |
| Total: Asian | 9.5 | 0.9 | 0.9 | 2.1 | 2.2 | 2.9 | 8.7 |
| Black British: CARIBBEAN | 0.6 | 0.0 | 0.1 | 0.1 | 0.1 | 0.2 | 1.4 |
| Black British: AFRICAN | 0.9 | 0.4 | 0.3 | 0.4 | 0.2 | 0.4 | 2.8 |
| Black British: other groups | 0.5 | 0.1 | 0.0 | 0.2 | 0.1 | 0.2 | 0.5 |
| Total: Black | 2.0 | 0.5 | 0.4 | 0.7 | 0.4 | 0.8 | 4.7 |
| CHINESE | 1.4 | 0.4 | 0.2 | 0.3 | 0.5 | 0.5 | 0.3 |
| Any other ethnic group | 1.9 | 0.3 | 0.2 | 0.4 | 0.4 | 0.6 | 1.3 |
| <i>Information not sought</i> | <i>0.1</i> | <i>0.1</i> | <i>0.0</i> | <i>0.1</i> | <i>0.3</i> | <i>0.1</i> | |
| <i>Information refused</i> | <i>1.3</i> | <i>0.7</i> | <i>0.3</i> | <i>0.9</i> | <i>1.0</i> | <i>0.9</i> | <i>0.3</i> |
| Total minority ethnic groups | 23.2 | 5.4 | 4.0 | 7.2 | 8.1 | 9.1 | 19.2 |

Mother Tongue

6.5% of Cambridgeshire primary pupils have a mother tongue known or believed to be other than English, compared with 14.4% nationally. 20.7% of pupils in Cambridge City primary schools have a mother tongue other than English.

PRIMARY AGE PUPILS IN CAMBRIDGESHIRE: 2007/2008 school year

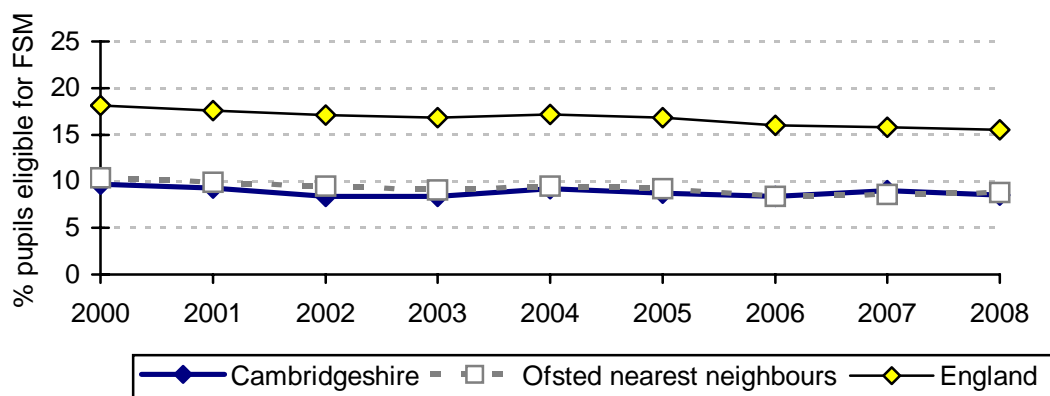
ELIGIBILITY FOR A FREE SCHOOL MEAL

Eligibility for a free school meal is frequently used as an indicator of social need. Children whose parents are in receipt of the following are entitled to receive free school meals:

- Income Support (IS);
- Income Based Job Seekers Allowance (IBJSA);
- Support under part VI of the Immigration and Asylum Act 1999;
- Other eligible benefits/tax credits.

<http://www.cambridgeshire.gov.uk/education/parents/help/freelunches.htm>

Percentage of primary pupils eligible for a free school meal



The proportion of Cambridgeshire pupils known to be eligible for a free school meal is consistently below the national average, and has gradually fallen, reflecting national patterns. Cambridge City and Fenland generally have the highest proportion of pupils eligible for a free school meal in the county, South Cambridgeshire the lowest. The table shows comparative figures for January 2008.

| % primary pupils eligible for a free school meal, January 2008 | | | | | | |
|--|----------------|----------------|------------|---------|-------|-------------|
| England | Cambridgeshire | Cambridge City | East Cambs | Fenland | Hunts | South Cambs |
| 15.5 | 8.5 | 13.1 | 6.1 | 13.2 | 7.8 | 4.6 |

Research at national and county level indicates that there is a relationship between social need and both pupil attainment and behaviour. Schools and LAs with the lowest rates of FSM generally, though not always, have the highest rates of attainment and the lowest exclusion and unauthorised absence rates.

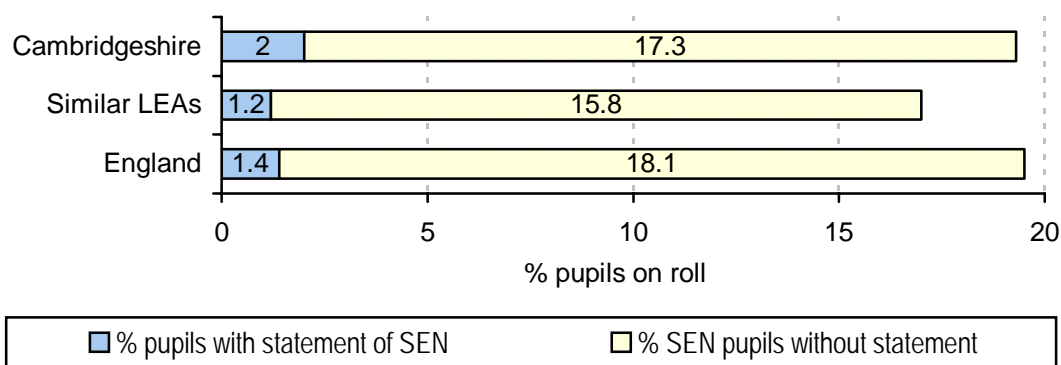
PRIMARY AGE PUPILS IN CAMBRIDGESHIRE: 2007/2008 school year

PUPILS WITH SPECIAL EDUCATIONAL NEEDS

Arrangements for identifying and providing for children with special educational needs (SEN) are set out by law. All LAs, schools and early years settings must comply with the SEN Code of Practice which was introduced in 1994 and revised in 2002.

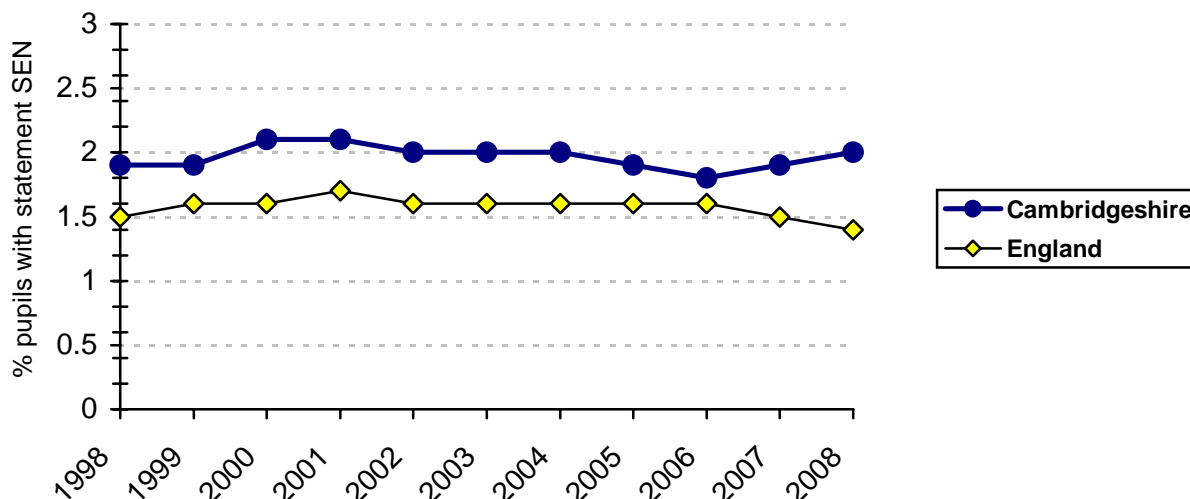
There are three identified groups of need: School Action, School Action Plus and Statements of SEN for those with the greatest need. In January 2008 19.3% of primary pupils in Cambridgeshire were identified within these groups, of which 2.0% have been given a Statement.

Primary pupils with special educational needs January 2008



Primary pupils with Statements for Special Educational Needs

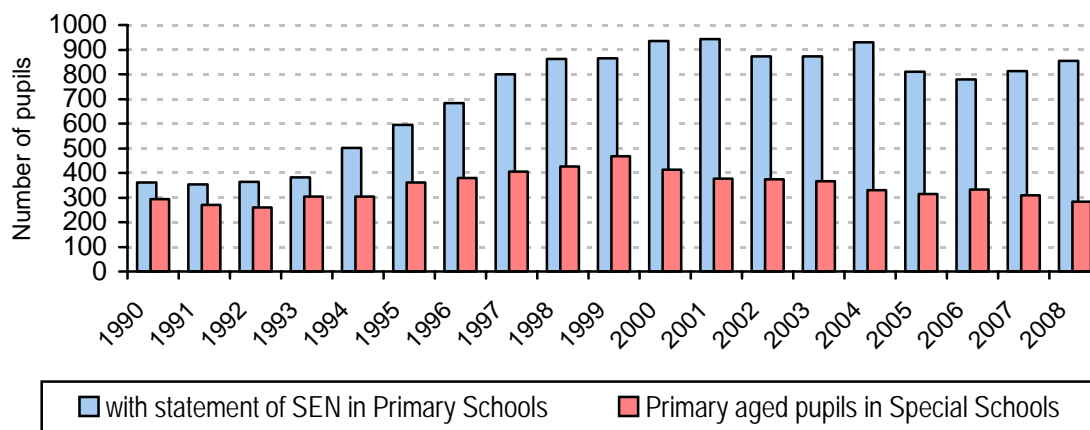
The percentage of primary pupils with a Statement of Special Educational Needs in Cambridgeshire has been above the national level, but the graph below shows the



PRIMARY AGE PUPILS IN CAMBRIDGESHIRE: 2007/2008 school year

growth in numbers of primary age pupils in Cambridgeshire schools with a Statement of SEN, reflecting improvements in identifying need and provision.

Primary age pupils with special needs in Cambridgeshire schools



Cambridgeshire, like all Local Authorities, has a statutory duty to monitor the time taken to produce new Statements of SEN. The requirement is to publish the proportion of Statements produced within twenty-six weeks, alongside our targets for improvement.

Our performance against this National Indicator (NI 103a) is shown on the table below.

Percentage of statements of special educational need prepared within 26 weeks (NI103a)

| | Actuals | Targets |
|----------------|---------|---------|
| Financial Year | 08/09 | 08/09 |
| NI103a | 100% | 95% |

TEACHING STAFF IN PRIMARY SCHOOLS

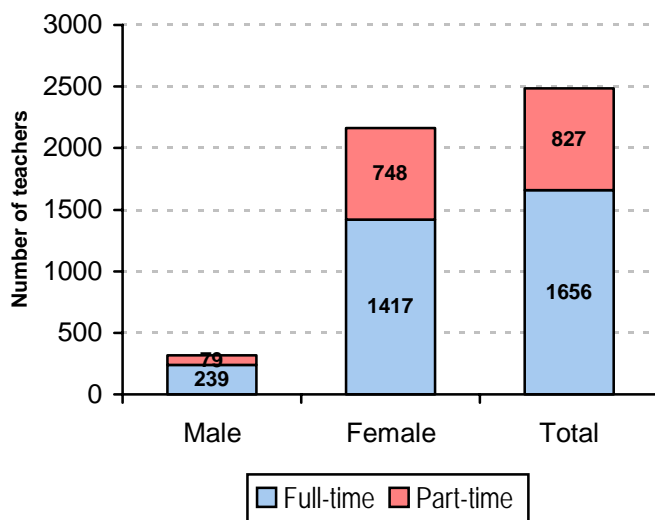
In January 2008 there were 1990.1 full-time equivalent teaching posts in Cambridgeshire primary and nursery schools, and a headcount workforce of 2483 teachers.

Of these 2483 teachers:

- 1656 (66.7%) are full-time
- 827 (33.3%) are part-time
- 2401 (96.7%) are qualified teachers
- 39 (1.6%) are teachers not recognised as qualified (e.g. instructors and student teachers, Foreign Language Assistants or Graduate and Registered teachers)
- 29 (1.2%) are teachers on schemes leading to qualified teachers status

The primary teacher workforce in Cambridgeshire is predominately female (2165, 87.2%), compared with male (318, 12.8%) teachers. Most (90.5%) part-time teachers are women.

Teachers in Primary Schools



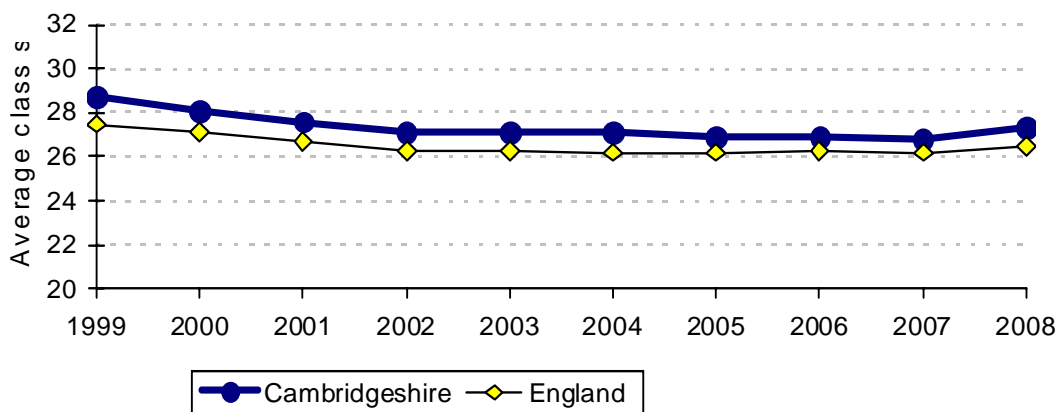
These numbers exclude supply teachers, unless they were temporarily undertaking contract work on School Census day in January.

PRIMARY CLASS SIZES

The average class size is calculated by dividing the number of pupils being taught at the time of the Annual School Census each January by the number of classes at the same time.

AVERAGE SIZE OF PRIMARY CLASSES

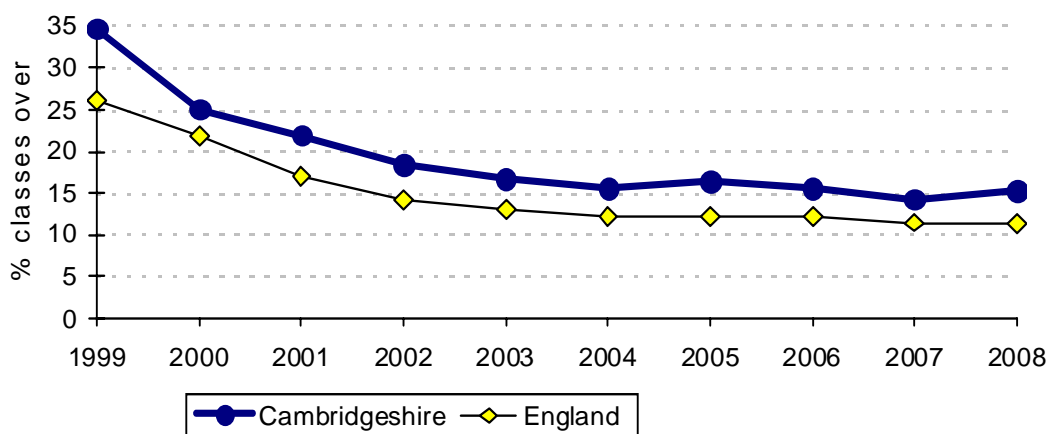
In January 2008 the average primary class in Cambridgeshire had 27.3 pupils, compared with the national average of 26.5. The average size of primary classes in Cambridgeshire fell between 1999 and 2002, but remains slightly above the national average. (Comparisons are based on classes with one teacher)



PRIMARY CLASSES WITH OVER 30 PUPILS

Government regulations permit Infant (KS1) Classes to exceed the statutory limit of 30 only in limited circumstances.

The percentage of primary school classes in Cambridgeshire with over 30 pupils is above the national average.



Cambridgeshire County Council monitors the percentage of primary classes over 30, but class size is an internal organisation issue for schools. Whether class sizes increase or decrease throughout the school year depends largely on pupil mobility.

PUPIL TEACHER RATIOS

Pupil Teacher ratios (PTRs) give the number of pupils per teacher. The figures given here for primary, secondary and special school sectors follow the definition used by the DCSF and include **qualified teachers** only. Teachers absent for long periods or seconded to other duties are excluded from calculations of PTRs within schools although their replacements, providing they are qualified teachers, are included. Headteachers are included.

The ratio is calculated as follows:

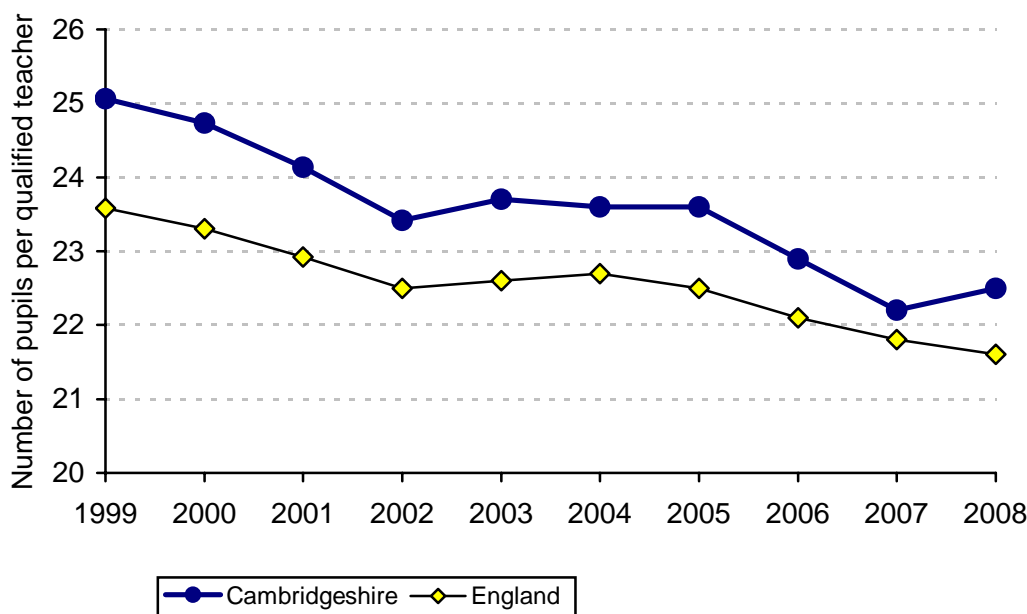
$$\frac{\text{Number of Full-time equivalent pupils}}{\text{Number of Full-time equivalent qualified teachers}}$$

The ratio can change when either or both the number of pupils or the number of teachers change. If the number of teachers rises or falls in line with any increase or decrease in the number of pupils, the PTR will remain constant.

While the number of teachers relative to the number of pupils will have an effect on class size, not all the teachers employed will necessarily be in the classroom at any one time. Headteachers and other Senior Management staff generally have reduced teaching commitments.

The Primary Pupil Teacher Ratio in Cambridgeshire has improved since 2005, in line with national patterns. It now stands at a ratio of 22.5 (January 2008). This is slightly above the national average of 21.6 (January 2008 figures), reflecting our larger than average primary class sizes.

Primary pupil teacher ratio

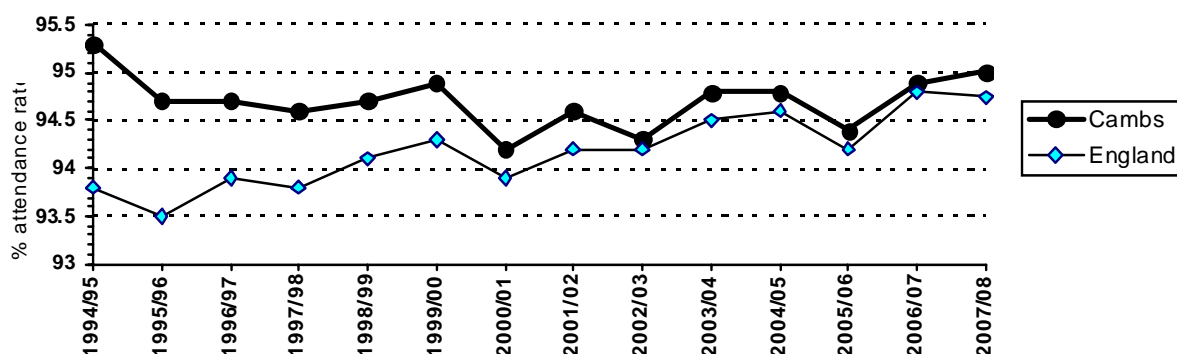


PUPIL ATTENDANCE

Government regulations require all maintained primary schools to submit details of attendance, including % half days lost through authorised and unauthorised absence, for publication in the Primary Absence Tables.

- Primary attendance rates in Cambridgeshire are now broadly in line with, though slightly above, national rates.
- In general, national rates of primary attendance have improved over the past ten years whilst those in Cambridgeshire have fluctuated around a broadly similar level. However the fall in attendance between 2006/07 and 2007/08 seen nationally was not mirrored in Cambridgeshire where rates rose.
- Primary attendance rates in Cambridgeshire are slightly below those of our statistical neighbours, but slightly above those across the East of England region.

Recent trends in attendance: Cambridgeshire & England



National data for 93/94 to 05/06 from DfES National Pupil Absence Tables

National data for 2006/07 and 2007/08 from DCSF Statistical First Releases SFR 05/2008 & SFR 03/2009

The introduction in 2006/07 of national codes for the reporting of absence led to some changes of classification between authorised and unauthorised absence. Data since 2006/07 is therefore not directly comparable with that for earlier years

- The rate of unauthorised absence from Cambridgeshire primary schools has now increased to 0.74% and is now above both the national rate (0.57%) and that for our statistical nearest neighbour authorities* (0.39%).
- The increase has occurred across all Localities

The level of unauthorised absence remains a concern in Cambridge City, Cottenham and Swavesey and parts of Fenland. There are particular issues in Wisbech.

PRIMARY AGE PUPILS IN CAMBRIDGESHIRE: 2007/2008 school year

Unauthorised absence: % half days missed: recent trends

| | 2004/05 | 2005/06 | 2006/07 | 2007/08 |
|--|-------------|-------------|-------------|-------------|
| East Cambridgeshire & Fenland | 0.54 | 0.58 | 0.80 | 0.93 |
| Wisbech | 0.99 | 1.07 | 1.55 | 1.76 |
| March & Chatteris | 0.77 | 0.87 | 0.92 | 0.98 |
| Whittlesey | 0.21 | 0.18 | 0.40 | 0.73 |
| Ely, Littleport & Witchford | 0.30 | 0.35 | 0.39 | 0.55 |
| Bottisham, Burwell & Soham | 0.30 | 0.25 | 0.56 | 0.57 |
| Huntingdonshire | 0.27 | 0.35 | 0.47 | 0.58 |
| St Neots | 0.31 | 0.40 | 0.46 | 0.52 |
| Huntingdon | 0.30 | 0.41 | 0.61 | 0.73 |
| Ramsey, Sawtry & Yaxley | 0.19 | 0.30 | 0.39 | 0.54 |
| St Ives | 0.31 | 0.22 | 0.36 | 0.45 |
| South Cambridgeshire & Cambridge City | 0.38 | 0.45 | 0.67 | 0.70 |
| Cambridge North | 0.64 | 0.55 | 0.70 | 0.88 |
| Cambridge South | 0.62 | 0.72 | 0.79 | 0.87 |
| Sawston & Linton | 0.16 | 0.09 | 0.30 | 0.44 |
| Bassingbourn, Melbourn, Comberton & Gamlingay | 0.11 | 0.16 | 0.34 | 0.42 |
| Cottenham & Swavesey | 0.20 | 0.60 | 1.25 | 0.86 |
| Cambridgeshire | 0.40 | 0.46 | 0.67 | 0.74 |
| NfER Statistical neighbours* | 0.29 | 0.29 | 0.38 | 0.39 |
| East of England Region | 0.37 | 0.40 | 0.49 | 0.53 |
| England | 0.43 | 0.45 | 0.52 | 0.57 |

* Cambridgeshire's NfER Children's Services statistical 'nearest neighbours' are: Oxfordshire, Bath & NE Somerset, Wiltshire, Hampshire, Gloucestershire, West Berkshire, Hertfordshire, Worcestershire, Bedfordshire, West Sussex

The introduction in 2006/07 of national codes for the reporting of absence led to some changes of classification between authorised and unauthorised absence. Data since 2006/07 is therefore not directly comparable with that for earlier years

- The overall rate of authorised absence across Cambridgeshire primary schools has fallen slightly this year, from 4.45% in 2006/07 to 4.25% in 2007/08. Improvement has been widespread, particularly in Cambridge North.
- The Cambridgeshire rate is slightly better than the national rate (4.69%) and that for our statistical nearest neighbours (4.50%).

PRIMARY AGE PUPILS IN CAMBRIDGESHIRE: 2007/2008 school year

- Rates of authorised absence are generally highest in Cambridge City and Fenland and lowest in Huntingdon and Sawston & Linton.

Authorised absence: % half days missed: recent trends

| | 2004/05 | 2005/06 | 2006/07 | 2007/08 |
|--|-------------|-------------|-------------|-------------|
| East Cambridgeshire & Fenland | 5.19 | 5.23 | 4.66 | 4.36 |
| Wisbech | 5.62 | 5.34 | 4.97 | 4.65 |
| March & Chatteris | 5.16 | 5.21 | 4.72 | 4.49 |
| Whittlesey | 5.03 | 5.55 | 4.49 | 4.04 |
| Ely, Littleport & Witchford | 4.95 | 5.05 | 4.86 | 4.25 |
| Bottisham, Burwell & Soham | 5.15 | 5.18 | 4.18 | 4.21 |
| Huntingdonshire | 4.31 | 4.79 | 4.08 | 3.99 |
| St Neots | 4.37 | 4.86 | 4.34 | 4.25 |
| Huntingdon | 4.33 | 4.67 | 3.89 | 3.73 |
| Ramsey, Sawtry & Yaxley | 4.17 | 4.60 | 4.07 | 4.02 |
| St Ives | 4.51 | 5.36 | 4.10 | 4.05 |
| South Cambridgeshire & Cambridge City | 4.85 | 5.30 | 4.58 | 4.37 |
| Cambridge North | 5.49 | 5.68 | 5.44 | 4.68 |
| Cambridge South | 4.66 | 5.66 | 4.65 | 4.86 |
| Sawston & Linton | 4.26 | 4.53 | 4.01 | 3.90 |
| Bassingbourn, Melbourn, Comberton & Gamlingay | 4.47 | 4.83 | 4.21 | 4.07 |
| Cottenham & Swavesey | 5.13 | 5.57 | 4.40 | 4.09 |
| Cambridgeshire | 4.79 | 5.12 | 4.45 | 4.25 |
| NfER Statistical neighbours* | 4.77 | 5.04 | 4.53 | 4.50 |
| East of England Region | 5.04 | 5.30 | 4.73 | 4.58 |
| England | 5.00 | 5.30 | 4.66 | 4.69 |

* Cambridgeshire's NfER Children's Services statistical 'nearest neighbours' are: Oxfordshire, Bath & NE Somerset, Wiltshire, Hampshire, Gloucestershire, West Berkshire, Hertfordshire, Worcestershire, Bedfordshire, West Sussex

EXCLUSIONS FROM PRIMARY SCHOOLS

There were two permanent exclusions from Cambridgeshire primary schools in 2007/08, an increase from one in 2006/07.

| Permanent exclusion per % school population: recent trends | | | | | | |
|--|---------|---------|---------|---------|---------|---------|
| | 2002/03 | 2003/04 | 2004/05 | 2005/06 | 2006/07 | 2007/08 |
| Cambridgeshire | 0.00 | 0.00 | 0.00 | 0.00 | 0.00 | 0.00 |
| England | 0.03 | 0.03 | 0.03 | 0.02 | 0.02 | N/A |

Fixed Term exclusions

There were 338 instances of fixed term exclusions in 2007/08, 313 (92.6%) involving boys and 25 (7.4%) involving girls

Compared with 2006/07, this is a drop of 61 instances.

| Numbers of fixed term exclusions per % school population: recent trends | | | | | | |
|---|---------|---------|---------|---------|---------|---------|
| | 2002/03 | 2003/04 | 2004/05 | 2005/06 | 2006/07 | 2007/08 |
| Cambridgeshire | 0.2 | 0.3 | 0.5 | 0.5 | 0.91 | 0.77 |
| England | N/A | 0.03 | 0.03 | 0.02 | 0.02 | N/A |

FOUNDATION STAGE PROFILE

The Foundation Stage Profile (FSP) provides a summary of a child's development at the end of the Foundation Year, based on professional observations and assessments made against the National Early Learning Goals.

The curriculum covers **six areas of learning**: personal, social and emotional development (3 assessment scales); communication, language and literacy (4 assessment scales); mathematical development (3 assessment scales); knowledge and understanding of the world (1 assessment scale); physical development (1 assessment scale), and creative development (1 assessment scale).

The Profile captures the **Early Learning Goals** as a set of thirteen assessment scales, each of which has nine points.

a) The first three points (1-3) are the 'stepping stones'. Most children will achieve all of these three points before they achieve any of the Early Learning Goals, but there may be some who experience difficulties and require specialist support.

b) The next five points (4-8) are drawn from the Early Learning Goals themselves. They are presented in order of difficulty, but a child may achieve a later point without having achieved some or all of the earlier points.

c) The final point (9) in each stage describes a child who has achieved all the points from 1-8 on that scale and is working consistently beyond the level of the Early Learning Goals.

Foundation Stage Profiles scores in 2008 showed that the majority of children are working securely within the Early Learning Goals (six points or more) for all assessments.

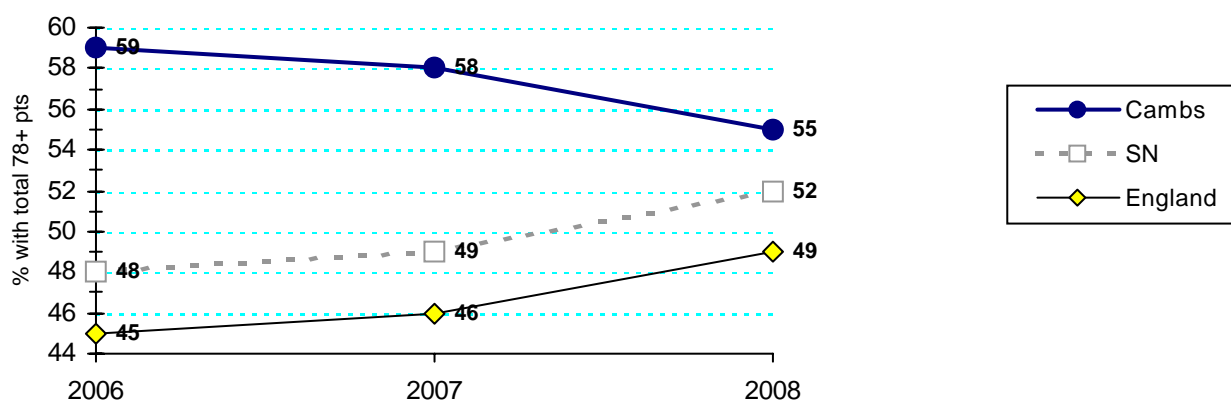
FSP 2008: percentage achieving six points or more on the assessment scales

| | Cambridgeshire | England |
|--|----------------|---------|
| Personal, social & emotional development | | |
| Dispositions & attitudes | 90% | 88% |
| Social development | 85% | 82% |
| Emotional development | 80% | 77% |
| Communication, language & literacy | | |
| Language for communication & thinking | 85% | 79% |
| Linking sounds & letters | 78% | 71% |
| Reading | 76% | 70% |
| Writing | 66% | 61% |
| Mathematical development | | |
| Numbers as labels for counting | 90% | 88% |
| Calculating | 79% | 72% |
| Shape, space & measures | 87% | 81% |
| Knowledge & understanding of the world | 86% | 79% |
| Physical development | 91% | 89% |
| Creative development | 85% | 79% |

PRIMARY AGE PUPILS IN CAMBRIDGESHIRE: 2007/2008 school year

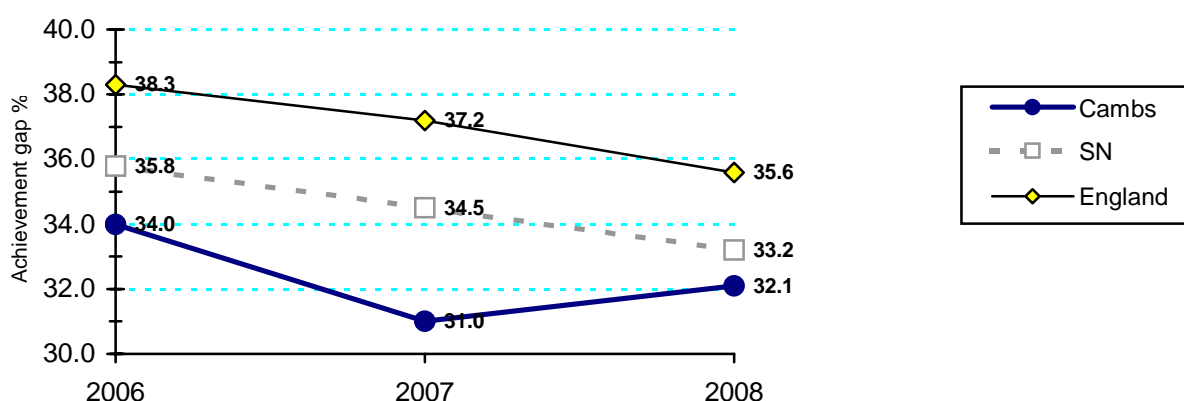
The following graph shows comparative performance in NI 72. The percentage of children in Cambridgeshire achieving at least 78 points across all scales with at least 6 in each of the scales in PSE and CLL is six percentage points above the national level and three percentage points above the average for our statistical neighbour authorities. However in 2008 the Cambridgeshire NI72 figure fell by three percentage points to 55%. In contrast there was a three percentage point increase both nationally and across our statistical neighbours.

Percentage achieving 78+ points across all scales and 6+ in all PSE & CLL scales (NI72)



In Cambridgeshire the gap between the lowest achieving 20% and the rest (NI92) has increased very slightly this year. In contrast it has narrowed both nationally and across our statistical neighbour authorities. The DCSF report that the gap narrowed in 116 of the 150 Local Authorities; Cambridgeshire was one of 32 to show an increase.

Percentage inequality gap in achievement (NI92) (all pupils)



This graph shows the scores which underpin NI92 - i.e. the median score for all children together with the mean score for the lowest 20% of achievers – for Cambridgeshire, England and our statistical neighbour authorities. Scores in Cambridgeshire remain above national and statistical neighbour levels.

KEY STAGE 1 NATIONAL CURRICULUM ASSESSMENT

The assessment is taken at the end of Key Stage 1 by pupils aged 7+. The expected level of performance is Level 2.

There are no statutory performance indicators for the end of KS1 National Curriculum Assessment.

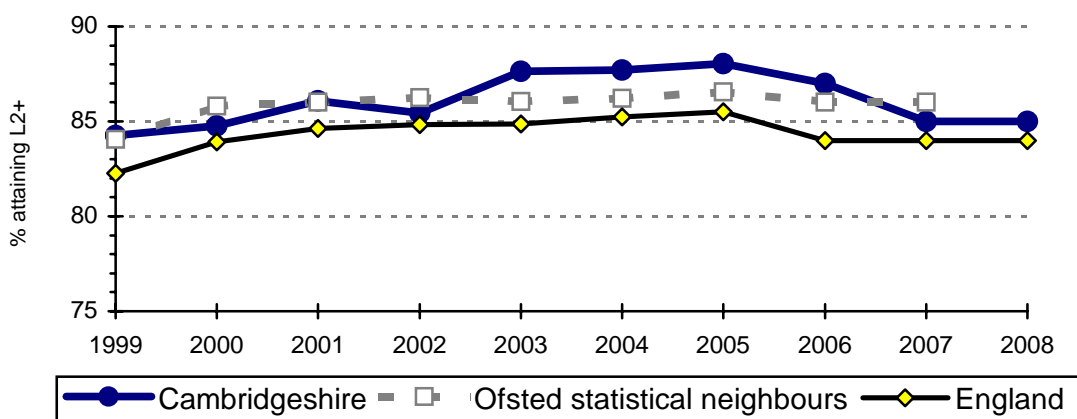
Due to a change of government policy the figures for 2005 onwards are taken from teacher assessment results.

KS1 READING

In 2008 85% of Cambridgeshire pupils aged 7+ were assessed as attaining Level 2 or above in Key Stage 1 Reading.

Cambridgeshire performance in Key Stage 1 Reading is above the national average.

KS1 Teacher Assessment results: READING % L2+



Girls consistently out-perform boys in reading at KS1, with the 2008 results showing a 'gender gap' of nine percentage points. The wide difference in performance in reading by boys and girls is a national issue, not unique to Cambridgeshire.

| % Attaining L2 or more in KS1 Reading | | | | | | |
|---------------------------------------|------------|------------|------------|----------|----------|----------|
| | 2003 | 2004 | 2005 | 2006 | 2007 | 2008 |
| Boys | 84.6 | 84 | 84.8 | 83 | 82 | 80 |
| Girls | 90.8 | 91.7 | 91.4 | 91 | 89 | 89 |
| Girl –boy difference | 6.2 | 7.7 | 6.6 | 8 | 7 | 9 |

PRIMARY AGE PUPILS IN CAMBRIDGESHIRE: 2007/2008 school year

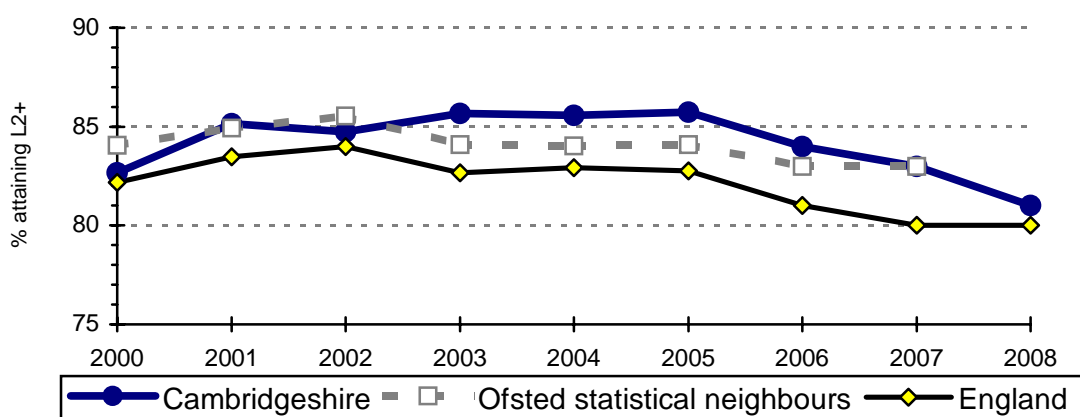
There are also variations by minority ethnic group, with pupils from Indian and Chinese backgrounds generally performing above, and those from Bangladeshi and Traveller backgrounds below, the county average.

KS1 WRITING

In 2008 81% of Cambridgeshire pupils aged 7+ were assessed as attaining Level 2 or above in Key Stage 1 Writing.

Cambridgeshire performance in Key Stage 1 Writing is generally above both the national average and that for our benchmarking group of similar LAs.

KS1 Teacher Assessment results: WRITING % L2+



Girls consistently out-perform boys in KS1 Writing, with the 2008 results showing a 'gender gap' of twelve percentage points. The wide difference in performance in writing by boys and girls is a national issue, not unique to Cambridgeshire.

| % Attaining L2 or more in KS1 Writing | | | | | | |
|---------------------------------------|------------|-------------|------------|-----------|----------|-----------|
| | 2003 | 2004 | 2005 | 2006 | 2007 | 2008 |
| Boys | 82.0 | 80.5 | 81.3 | 79 | 78 | 75 |
| Girls | 89.5 | 90.9 | 90.4 | 89 | 87 | 87 |
| Girl –boy difference | 7.5 | 10.4 | 9.1 | 10 | 9 | 12 |

There are also variations by minority ethnic group, with pupils from Indian and Chinese backgrounds generally performing above the county average, and those from Bangladeshi and Traveller backgrounds performing below the county average.

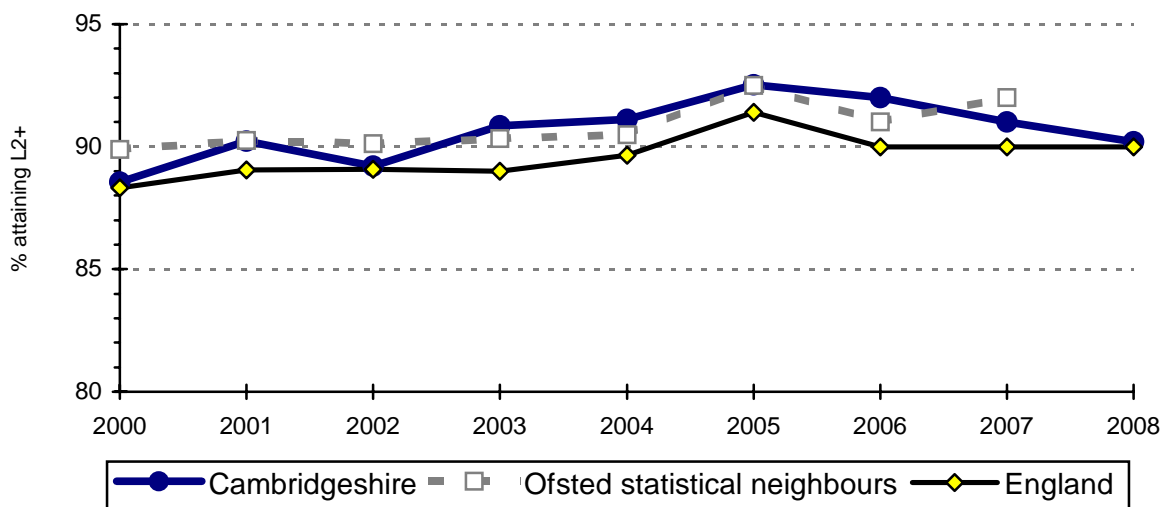
PRIMARY AGE PUPILS IN CAMBRIDGESHIRE: 2007/2008 school year

KS1 MATHEMATICS

In 2008 90% of Cambridgeshire pupils aged 7+ were assessed as attaining Level 2 or above in the Key Stage 1 Mathematics.

Cambridgeshire performance in Key Stage 1 Mathematics is in line with both the national average and performance by our benchmarking group of similar LAs.

KS1 Mathematics Tests: % L2+



The 'gender gap' between the performance of girls and boys is very much smaller in mathematics than in reading or writing.

| % Attaining L2 or more in KS1 Mathematics | | | | | | |
|---|------------|------------|------------|----------|----------|----------|
| | 2003 | 2004 | 2005 | 2006 | 2007 | 2008 |
| Boys | 90.7 | 90.1 | 91.7 | 91 | 90 | 88 |
| Girls | 91.0 | 92.2 | 93.4 | 93 | 92 | 92 |
| Girl –boy difference | 0.3 | 2.1 | 1.7 | 2 | 2 | 4 |

There are variations by minority ethnic group, with pupils from Indian and Chinese backgrounds generally performing above the county average, and those from Bangladeshi and Traveller backgrounds performing below the county average.

KEY STAGE 2 NATIONAL CURRICULUM ASSESSMENT

These tasks and tests are taken at the end of Key Stage 2 by pupils aged 11+. The expected level of performance is Level 4.

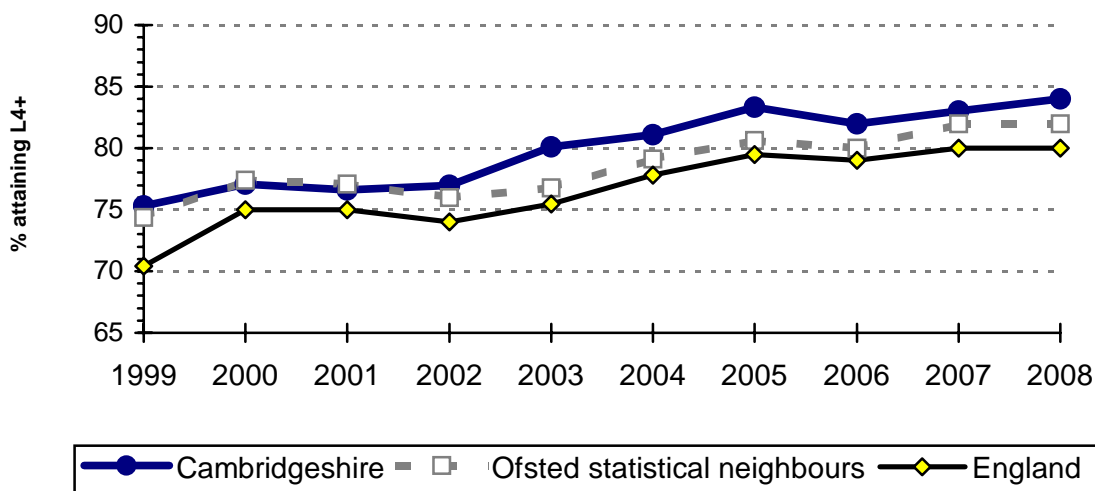
KS2 ENGLISH TESTS

In ENGLISH the percentage of pupils achieving L4+ in Cambridgeshire is slightly above average for our statistical neighbours, Cambridgeshire scores are four percentage points above the national and regional average.

Proportion of pupils achieving Level 4 or above in the KS2 English test

| School Yr Financial Year | Actuals | | | | | Targets | | | |
|-----------------------------|----------------|----------------|----------------|----------------|----------------|----------------|----------------|----------------|----------------|
| | 03/04 04/05 | 04/05 05/06 | 05/06 06/07 | 06/07 07/08 | 07/08 08/09 | 04/05 05/06 | 05/06 06/07 | 06/07 07/08 | 07/08 08/09 |
| | 80 | 82 | 82 | 83 | 84 | 82 | 83 | 84 | 85 |

Comparative trends in performance: % L4+ in the KS2 English Test



The years on the graph show the year the test was taken (e.g. 2008= school year 2007/08, financial year 2008/09)
Source: OfSTED

PRIMARY AGE PUPILS IN CAMBRIDGESHIRE: 2007/2008 school year

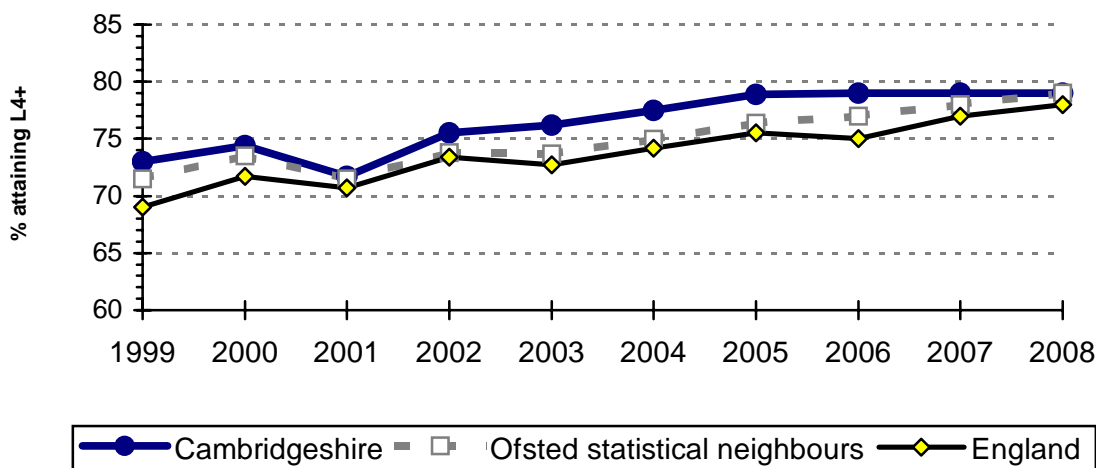
KS2 MATHEMATICS TEST

In MATHS the percentage of pupils achieving L4+ in Cambridgeshire matches the average for our statistical neighbours, and we are at or slightly above the median for the group. Scores are broadly similar to national and regional averages.

Proportion of pupils achieving Level 4 or above in the KS2 Mathematics test

| School Yr Financial Year | Actuals | | | | | Targets | | | |
|-----------------------------|----------------|----------------|----------------|----------------|----------------|----------------|----------------|----------------|----------------|
| | 03/04 04/05 | 04/05 05/06 | 05/06 06/07 | 06/07 07/08 | 07/08 08/09 | 04/05 05/06 | 05/06 06/07 | 06/07 07/08 | 07/08 08/09 |
| | 77 | 78 | 79 | 79 | 79 | 83 | 84 | 83 | 83 |

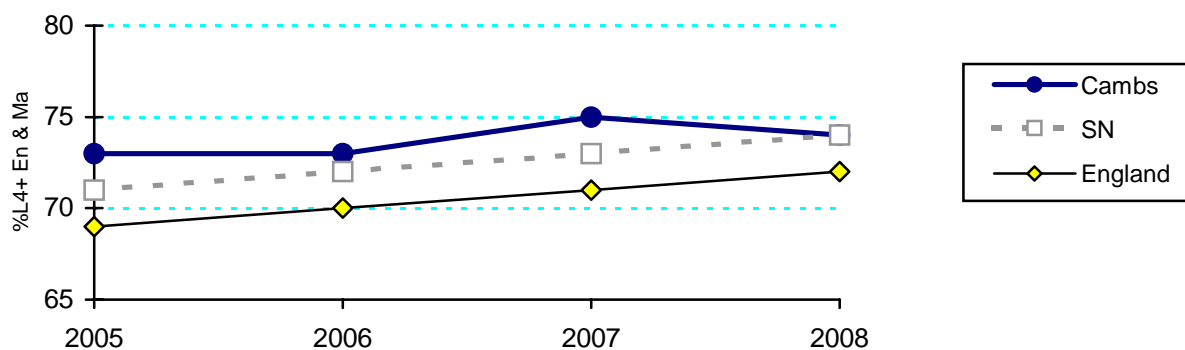
Comparative trends in performance: % L4+ in the KS2 Mathematics Test



PRIMARY AGE PUPILS IN CAMBRIDGESHIRE: 2007/2008 school year

Although we are required to report KS2 2008 performance in the new NIs (NI73 L4+ in both English & maths) in March 2009, we have no statutory targets for them until 2009 as they were only introduced after the 2008 targets had been agreed with DCSF at the beginning of 2007. In Cambridgeshire the proportion of boys, girls and all pupils who achieve Level 4+ in both English and maths is in line with our statistical neighbour authorities and slightly above national and regional averages.

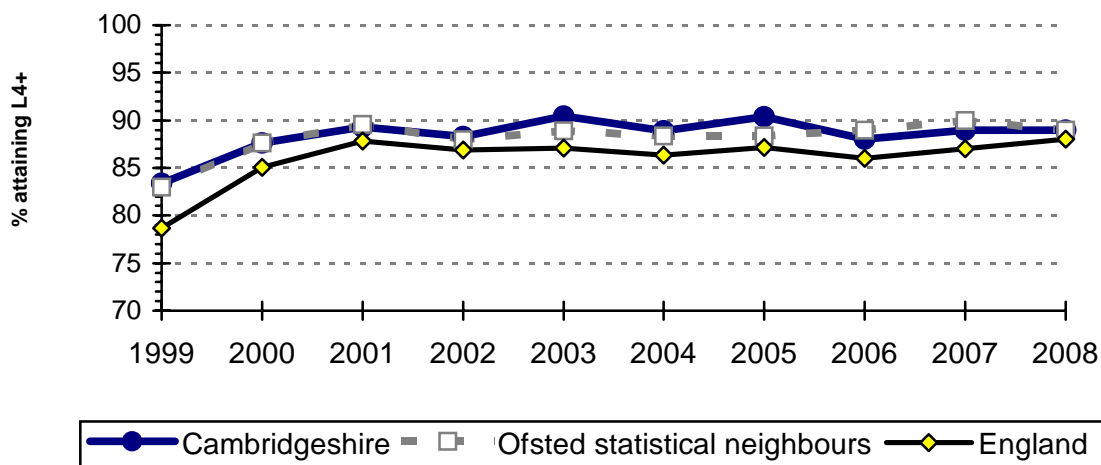
% L4+ in BOTH the KS2 ENGLISH & MATHS Tests: Comparative trends (All pupils)



KS2 SCIENCE TESTS

In SCIENCE the percentage of pupils achieving L4+ in Cambridgeshire matches the average for our statistical neighbours, scores are broadly similar to national and regional averages.

Comparative trends in performance: % L4+ in the KS2 Science Test



The years on the graph show the year the test was taken (e.g. 2008 = school year 2007/08, financial year 2008/09)