

ALL ABOUT
SECONDARY
PUPILS
IN
CAMBRIDGESHIRE
2007-2008

SECONDARY AGE PUPILS IN CAMBRIDGESHIRE: 2007/2008 school year

CONTENTS

	Page
Schools in Cambridgeshire	2
Pupil numbers in Cambridgeshire	3
Pupils in each school sector	4
Pupils in each Cambridgeshire District	4
Trends in secondary age pupils in Cambridgeshire	5
Secondary pupils from minority ethnic backgrounds	6
Eligibility for a free school meal	8
Secondary pupils with a special educational need	9
Teaching staff in secondary schools	11
Secondary Pupil Teacher Ratios	12
Secondary class sizes	13
Attendance in secondary schools	14
Exclusions from secondary schools	16
Attainment in Key Stage 3 SATs	17
Attainment in GCSE examinations	18
Student destinations at 16+	20
Sixth Form qualifications	23

SECONDARY AGE PUPILS IN CAMBRIDGESHIRE: 2007/2008 school year

SCHOOLS IN CAMBRIDGESHIRE

In Cambridgeshire in January 2008 there were:

6 NURSERY SCHOOLS

4 in Cambridge City; 1 in Huntingdonshire; 1 in South Cambridgeshire

200 PRIMARY SCHOOLS

24 in Cambridge City; 27 in East Cambridgeshire; 33 in Fenland; 61 in Huntingdonshire; 55 in South Cambridgeshire

149 All-through primary; 11 Infant schools; 16 Junior schools; 2 First schools; 22 Schools with designated Nursery Classes

30 SECONDARY SCHOOLS

6 in Cambridge City; 4 in East Cambridgeshire; 4 in Fenland; 7 in Huntingdonshire; 9 in South Cambridgeshire

1 9-12 Middle school; 17 11-16 schools; 12 11-18 schools

7 SPECIAL SCHOOLS

1 in Cambridge City; 2 in East Cambridgeshire; 1 in Fenland; 2 in Huntingdonshire; 1 in South Cambridgeshire

6 PUPIL REFERRAL UNITS

3 in Cambridge City; 1 in East Cambridgeshire; 1 in Fenland; 1 in Huntingdonshire

For more information on schools in Cambridgeshire, click on:
<http://www.cambridgeshire.gov.uk/education/schools/>

SECONDARY AGE PUPILS IN CAMBRIDGESHIRE: 2007/2008 school year

PUPIL NUMBERS IN CAMBRIDGESHIRE

In January 2008 there were 77,808 children on roll in schools maintained by Cambridgeshire County Council. This is a headcount total. If children who attend part-time are counted as 0.5, the 'full-time equivalent' (fte) total is 77,010 pupils.

The table below shows that there are approximately 6,000 full-time equivalent pupils in each age-group cohort between 4+ and 15+, the years of compulsory education, with larger groups in the primary years between 5+ and 10+. The table shows how these age groups relate to National Curriculum year groups and Key Stages.

Age & year groups (full-time equivalent):

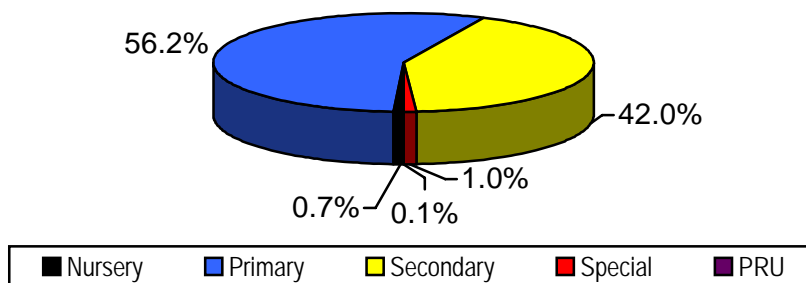
Phase	Nursery		←←←←←Primary→→→→→							←←←←Secondary→→→→→				←Sixth Form→		
Key Stage				←Key Stage 1→		←←←←Key Stage 2→→→→→			←←←Key Stage 3→→→		←Key stage 4→		←Post-16→			
Years	N1	N2	R	1	2	3	4	5	6	7	8	9	10	11	12	13
Ages	Under 3	3	4	5	6	7	8	9	10	11	12	13	14	15	16	Over 17
	88	709	6163.5	6001	6078	6024	6196	6319.5	6344	5897	6060	6196	5996	6041	1561	1337

This table **does not include**:

- Pre-school children at Nurseries or Playgroups in Cambridgeshire maintained by providers other than Cambridgeshire County Council
- Pupils at Independent Schools in Cambridgeshire
- Cambridgeshire pupils attending residential Special Schools in other counties
- Post 16 students at Hills Road Sixth Form College, Long Road Sixth Form College or FE Colleges in Cambridgeshire

SECONDARY AGE PUPILS IN CAMBRIDGESHIRE: 2007/2008 school year

PUPILS IN EACH SCHOOL SECTOR

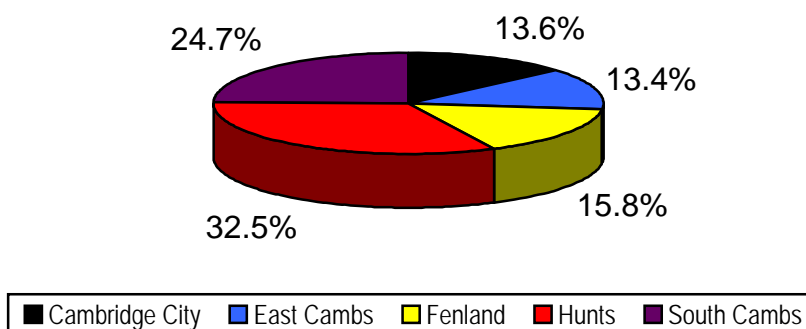


In January 2008 there were **77,010 full-time equivalent pupils (77,808 headcount)** in **249 maintained schools in Cambridgeshire:**

- 560 (0.72% total) in nursery schools or nursery classes
- 43,793 (56.2% total) in primary schools, excluding nursery classes
- 32,689 (42.0% total) in secondary and middle schools
- 766 (1.0% total) in special schools.
- 50 (0.1% total) at the Pupil Referral Units, excluding pupils dually registered at both a Unit and a school

These totals do not include children who live in Cambridgeshire and attend schools elsewhere

SECONDARY PUPILS IN EACH DISTRICT OF CAMBRIDGESHIRE



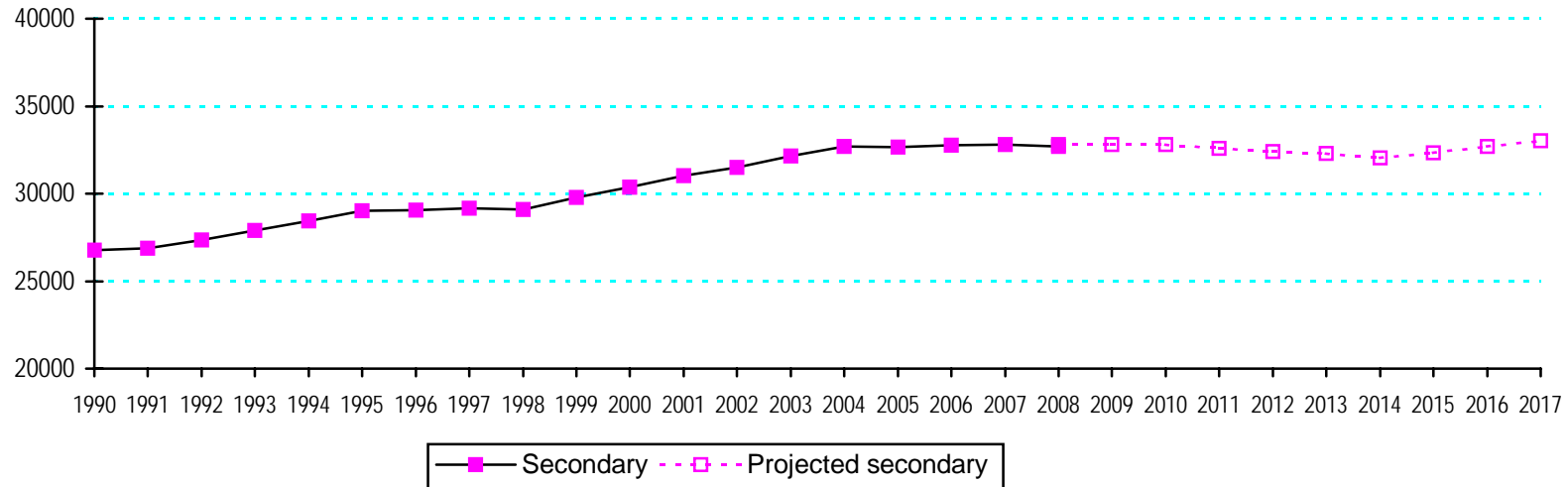
In January 2008 there were **32,689 secondary aged pupils across 5 Districts of Cambridgeshire:**

- 4431 (13.3% total) in Cambridge City
- 4393 (13.4% total) in East Cambridgeshire
- 5166 (15.7% total) in Fenland
- 10,618 (32.8% total) in Huntingdonshire
- 8081 (24.8% total) in South Cambridgeshire

These totals do not include children who live in Cambridgeshire and attend schools elsewhere

SECONDARY AGE PUPILS IN CAMBRIDGESHIRE: 2007/2008 school year

TRENDS IN SECONDARY AGE PUPIL NUMBERS IN CAMBRIDGESHIRE



Secondary numbers have increased since the mid-90s and are currently around 33,000. They are expected to stay around this level for a few years followed by a gradual fall before starting to increase. Over the next five years, secondary rolls in the county as a whole are forecast to fall slightly but increase by 6% in South Cambridgeshire and fall by 8% in Huntingdonshire and 3% in Fenland.

Further information is available from this web link:
<http://www.cambridgeshire.gov.uk/education/about/statistics>

SECONDARY AGE PUPILS IN CAMBRIDGESHIRE: 2007/2008 school year

PUPILS FROM MINORITY ETHNIC BACKGROUNDS

The DfES expects that all pupils, or their parents/carers on their behalf, will provide schools with information on their ethnicity. This enables schools and LAs to ensure that appropriate provision is made to support pupils who may be underachieving or experiencing problems as a result of their particular ethnic heritage.

Cambridgeshire CC uses the ethnic categories from the 2001 Census for this monitoring, with the addition of specific categories for Gypsy/Roma and Irish Travellers. Pupils and parents have the right not to provide the information, and in January 2008, 1.9% chose to exercise that right.

Ethnic minority communities within Cambridgeshire: % secondary pupils on roll Jan 08

	White	Mixed	Asian	Black	Chinese	No data
Cambridgeshire	87.3	2.6	2.2	0.8	0.6	1.9
England	82.5	3.0	7.5	4.2	0.4	0.8

In January 2008 6.7% of pupils in Cambridgeshire secondary schools were from a minority ethnic community. The largest groups were: Chinese (0.6%); Bangladeshi (0.6%); Indian (0.6%); Mixed White/Asian (0.6%).

Within Cambridge City, 18.4% of secondary pupils have a minority ethnic heritage, and there are strong Bangladeshi, Indian, Black African, and Chinese communities alongside smaller groups from across the world. Outside Cambridge there are sizeable communities of Pakistanis in Huntingdon and St Ives, and of Travellers across Fenland.

Ethnic monitoring information is providing evidence of under-performance in the end of Key Stage National Curriculum Tests by pupils from Bangladeshi, Traveller, Pakistani and Black Caribbean heritage groups. There is also some evidence of over-representation in areas associated with behavioural problems by Black Caribbean and Traveller pupils.

Cambridgeshire County Council is committed to eliminating such disparities arising from ethnic or racial background, and the Cambridgeshire Race Equality & Diversity Service (CREDS) works to support schools and community groups. For further information on the work of CREDS, see <http://www.cambridgeshire.gov.uk/education/about/services/creds.htm>

SECONDARY AGE PUPILS IN CAMBRIDGESHIRE: 2007/2008 school year

Ethnic minority communities within Cambridgeshire: % secondary pupils on roll Jan 08

	Cambridge City	East Cambs	Fenland	Hunts	South Cambs	Cambridgeshire	England
White: BRITISH	71.9	92.1	92.1	89.8	86.8	87.3	79.0
White: IRISH	0.5	0.1	0.1	0.2	0.2	0.2	0.4
White: IRISH TRAVELLER	0.0	0.1	0.0	0.0	0.0	0.0	0.0
White: GYPSY / ROMA	0.0	0.4	0.6	0.1	0.1	0.2	0.1
White: other groups	7.4	3.1	2.4	2.0	4.5	3.6	3.0
Total: White	79.8	95.8	95.2	92.1	91.6	91.3	82.5
MIXED: White/Black Caribbean	1.3	0.3	0.3	0.5	0.4	0.5	1.1
MIXED: White/Black African	0.6	0.2	0.2	0.3	0.2	0.3	0.3
MIXED: White/Asian	1.4	0.3	0.3	0.5	0.8	0.6	0.6
MIXED: White/Other	2.1	0.9	0.6	1.1	1.3	1.2	1.0
Total: Mixed heritage groups	5.4	1.7	1.4	2.4	2.7	2.6	3.0
Asian British: INDIAN	1.7	0.3	0.4	0.3	0.7	0.6	2.5
Asian British: PAKISTANI	0.7	0.0	0.0	0.8	0.2	0.4	2.8
Asian British: BANGLADESHI	3.4	0.1	0.2	0.3	0.1	0.6	1.1
Asian British: other groups	2.1	0.2	0.2	0.5	0.6	0.6	1.1
Total: Asian	7.9	0.6	0.8	1.9	1.6	2.2	7.5
Black British: CARIBBEAN	0.8	0.1	0.1	0.2	0.2	0.2	1.4
Black British: AFRICAN	1.0	0.3	0.3	0.4	0.4	0.4	2.3
Black British: other groups	0.3	0.1	0.2	0.2	0.1	0.2	0.5
Total: Black	2.1	0.5	0.6	0.8	0.7	0.8	4.2
CHINESE	1.4	0.3	0.1	0.5	0.6	0.6	0.4
Any other ethnic group	1.6	0.3	0.4	0.2	0.3	0.5	1.1
<i>Information not sought</i>	<i>0.6</i>	<i>0.3</i>	<i>0.6</i>	<i>0.8</i>	<i>0.9</i>	<i>0.7</i>	<i>0.0</i>
<i>Information refused</i>	<i>1.1</i>	<i>0.8</i>	<i>1.0</i>	<i>1.4</i>	<i>1.5</i>	<i>1.2</i>	<i>0.8</i>
Total minority ethnic groups	18.4	3.4	3.3	5.8	5.9	6.7	15.8

Mother Tongue

4.8% of Cambridgeshire secondary pupils have a first language known, or believed to be, other than English compared with 10.8% nationally.

14.2% of pupils in Cambridge City secondary schools have a first language other than English.

SECONDARY AGE PUPILS IN CAMBRIDGESHIRE: 2007/2008 school year

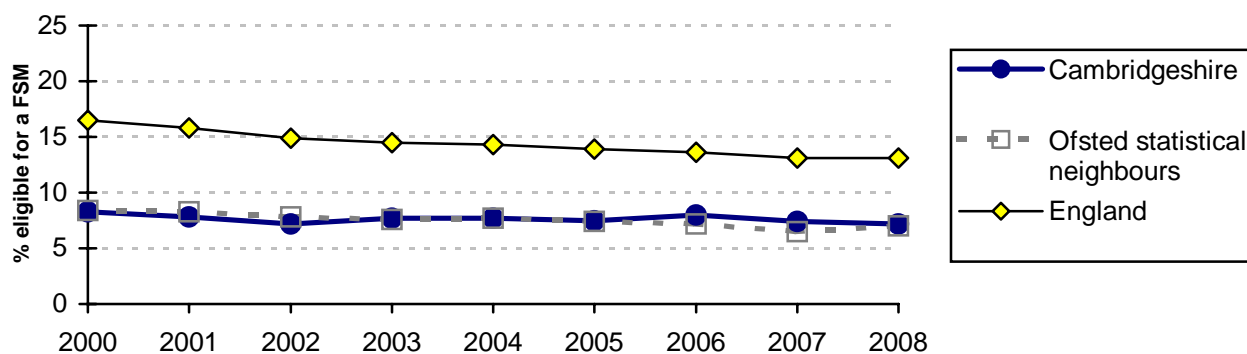
ELIGIBILITY FOR A FREE SCHOOL MEAL

Eligibility for a free school meal is frequently used as an indicator of social need. Children whose parents are in receipt of the following are entitled to receive free school meals:

- Income Support (IS);
- Income Based Job Seekers Allowance (IBJSA);
- Support under part VI of the Immigration and Asylum Act 1999;
- Other eligible benefits/tax credits.

<http://www.cambridgeshire.gov.uk/education/parents/help/lunches/>

Percentage of secondary pupils eligible for a free school meal



The proportion of Cambridgeshire pupils known to be eligible for a free school meal is consistently below the national average, but similar to that of our statistical neighbour authorities. Cambridge City and Fenland have the highest proportion of pupils eligible for a free school meal in the county, South Cambridgeshire the lowest.

% Secondary pupils eligible for a free school meal, January 2008						
England	Cambridgeshire	Cambridge City	East Cambs	Fenland	Hunts	South Cambs
13.1	7.2	11.9	6.6	10.2	6.3	4.2

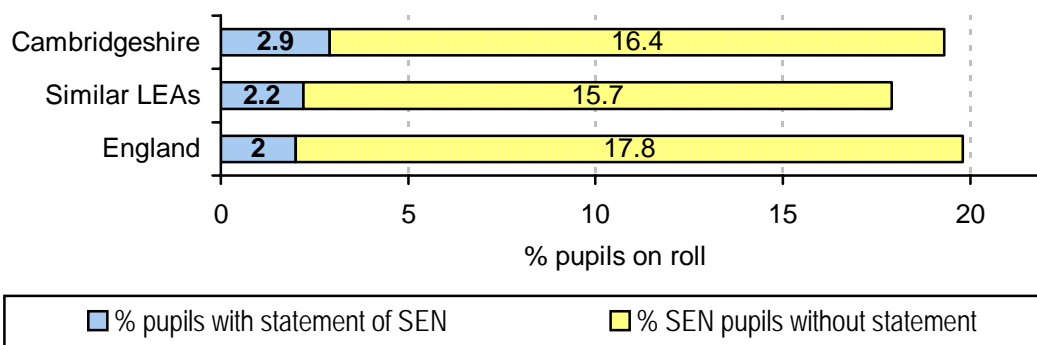
Research at national and county level indicates that there is a relationship between social need and both pupil attainment and behaviour. Schools and LAs with the lowest rates of FSM generally, though not always, have the highest rates of attainment and the lowest exclusion and unauthorised absence rates.

SECONDARY AGE PUPILS IN CAMBRIDGESHIRE: 2007/2008 school year

PUPILS WITH SPECIAL EDUCATIONAL NEEDS

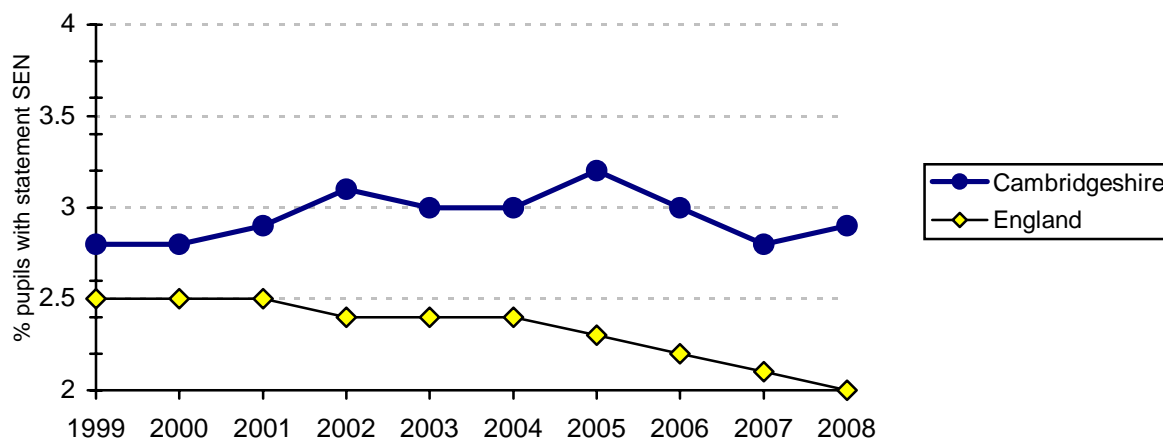
Arrangements for identifying and providing for children with special educational needs (SEN) are set out by law. All LAs, schools and early years settings must comply with the SEN Code of Practice which was introduced in 1994 and revised in 2002.

There are three identified groups of need: School Action, School Action Plus and Statements of SEN for those with the greatest need. In January 2008 19.3% of secondary pupils in Cambridgeshire were identified within these groups, slightly below the national rate of 19.5%, but broadly comparable with our benchmarking group of similar LAs. A higher proportion of Cambridgeshire secondary pupils have a Statement - 2.9%, as compared with 2.0% nationally.



Secondary pupils with Statements for Special Educational Needs

Until recently the percentage of secondary pupils with a Statement of Special Educational Needs in Cambridgeshire has been well above the level in our benchmarking group of similar LAs and across England as a whole.

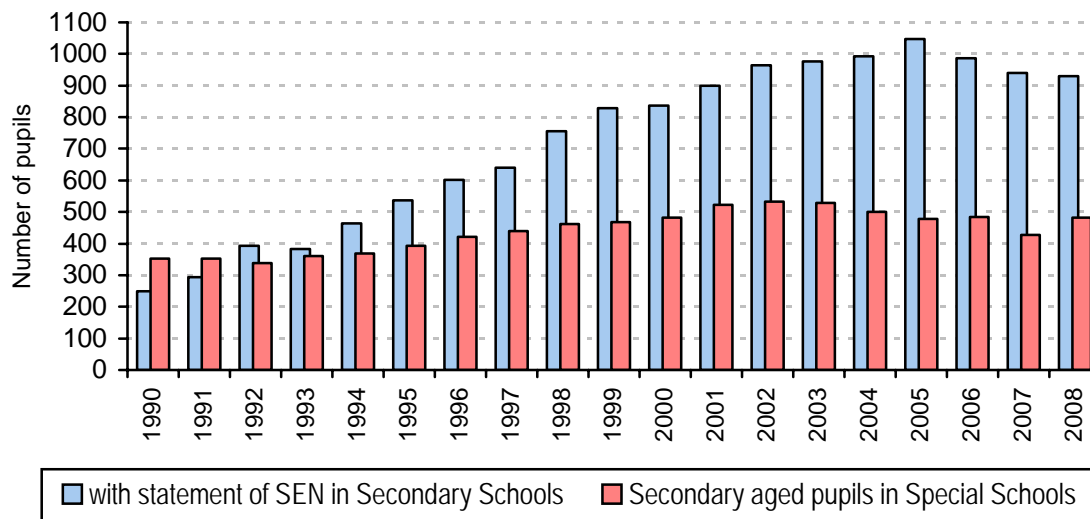


SECONDARY AGE PUPILS IN CAMBRIDGESHIRE: 2007/2008 school year

The graph below shows the growth in numbers of secondary age pupils in Cambridgeshire schools with a Statement of SEN, reflecting improvements in identifying need and provision. The number of statements increased rapidly during the 1990s, but is now levelling out.

It also shows the type of school attended by pupils with a Statement of SEN in Cambridgeshire. In 1990 there were more secondary pupils with special needs in Special Schools, by 2004 50% were in mainstream schools, reflecting the trend towards inclusion.

Secondary aged pupils with special needs in Cambridgeshire schools



Cambridgeshire, like all Local Authorities, has a statutory duty to monitor the time taken to produce new Statements of SEN. The requirement is to publish the proportion of Statements produced within twenty six weeks, alongside our targets for improvement.

Percentage of statements of special educational need prepared within 26 weeks (NI103a)

Actuals		Targets
Financial Year	08/09	08/09
NI103a	100%	95%

SECONDARY AGE PUPILS IN CAMBRIDGESHIRE: 2007/2008 school year

TEACHING STAFF IN SECONDARY SCHOOLS

There are 2031.4 full-time equivalent teaching posts in Cambridgeshire secondary schools, and a headcount workforce of 2269 teachers.

Of these 2269 teachers:

- 1793 (79.0%) are full-time
- 476 (21.0%) are part-time
- 2036 (89.7%) are qualified teachers (including Heads)
- 182 (8.0%) are teachers not recognised as qualified
- 43 (1.9%) are teachers on schemes leading to qualified teachers status

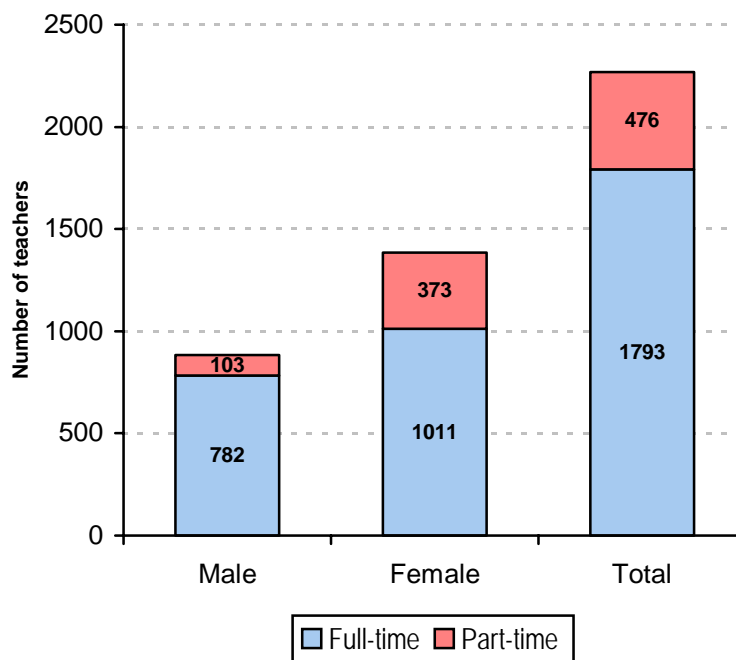
The secondary teacher workforce in Cambridgeshire consist of:

Female (1316; 60.7%)

Male (852; 39.2%)

The majority (373, 78.9%) of part-time teachers are female.

Teachers in Secondary Schools



These numbers exclude supply teachers, unless they were temporarily undertaking contract work on School Census day in January.

SECONDARY AGE PUPILS IN CAMBRIDGESHIRE: 2007/2008 school year

PUPIL TEACHER RATIOS

Pupil Teacher ratios (PTRs) give the number of pupils per teacher. The figures given here for primary, secondary and special school sectors follow the definition used by the DCSF and include **qualified teachers** only. Teachers absent for long periods or seconded to other duties are excluded from calculations of PTRs within schools although their replacements, providing they are qualified teachers, are included. Headteachers are included.

The ratio is calculated as follows:

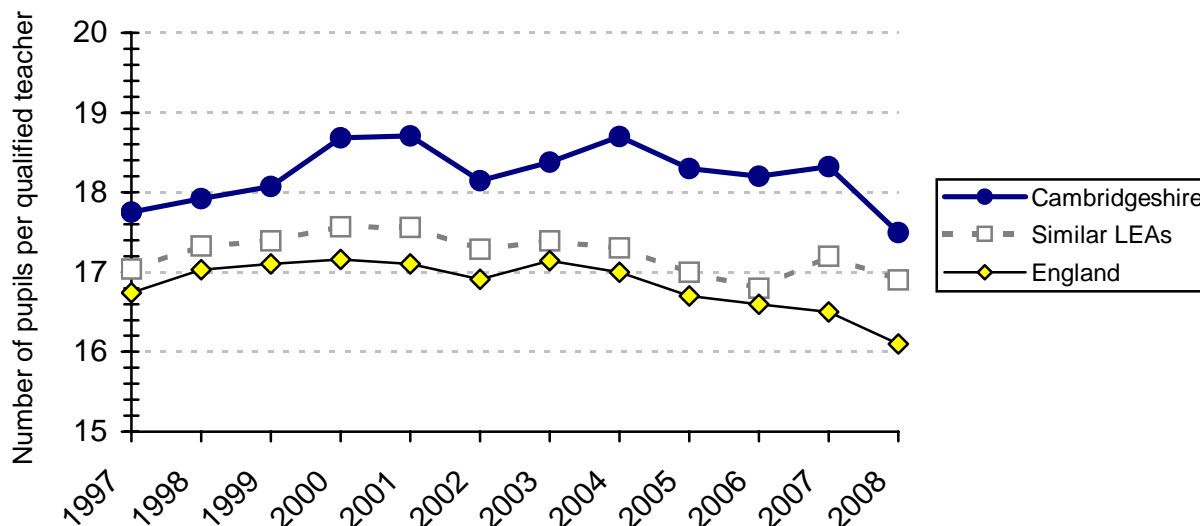
$$\frac{\text{Number of Full-time equivalent pupils}}{\text{Number of Full-time equivalent qualified teachers}}$$

The ratio can change when either or both the number of pupils or the number of teachers change. If the number of teachers rises or falls in line with any increase or decrease in the number of pupils, the PTR will remain constant.

While the number of teachers relative to the number of pupils will have an effect on class size, not all the teachers employed will necessarily be in the classroom at any one time. Headteachers and other Senior Management staff generally have reduced teaching commitments.

The Secondary Pupil Teacher Ratio in Cambridgeshire is now at its lowest level, following a deterioration in 2004. The Cambridgeshire rate is now 17.5:1, above the national average of 16:1 (January 2008 figures).

Secondary pupil teacher ratio



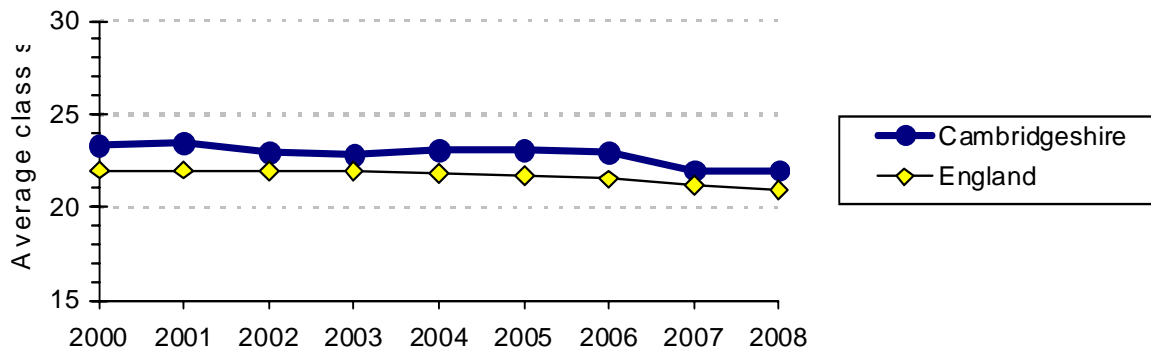
SECONDARY AGE PUPILS IN CAMBRIDGESHIRE: 2007/2008 school year

CLASS SIZES

The average class size is calculated by dividing the number of pupils being taught at the time of the Annual School Census each January by the number of classes at the same time.

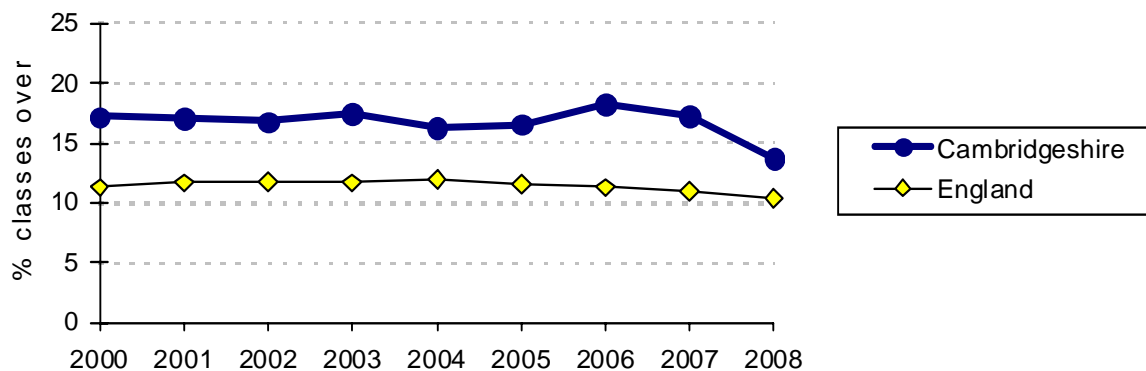
AVERAGE SIZE OF SECONDARY CLASSES

In January 2008 the average secondary class in Cambridgeshire had 22 pupils, compared with the national average of 20.9. In recent years the average size of secondary classes in Cambridgeshire has remained consistently above the national average. (Comparisons are based on classes with one teacher)



SECONDARY PUPILS IN CLASSES OF OVER 30

The percentage of secondary school pupils in classes of over 30 pupils in Cambridgeshire is consistently above the national average. In January 2008 13.7% of secondary pupils in Cambridgeshire were in classes of over 30, compared with the national average of 10.4%.

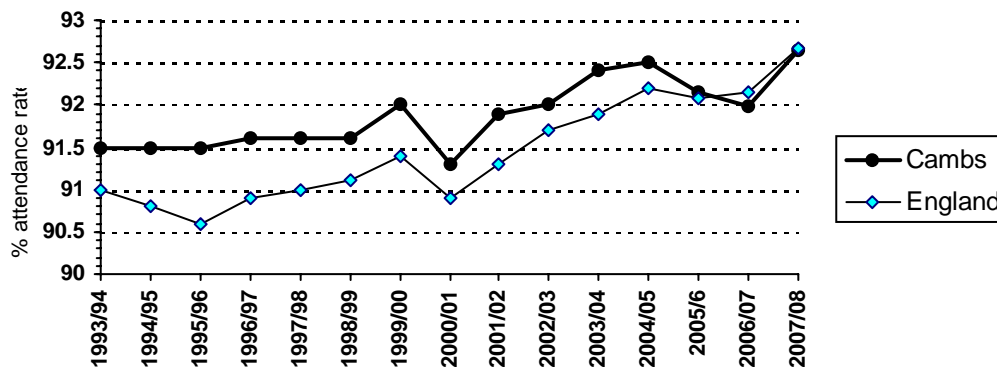


SECONDARY AGE PUPILS IN CAMBRIDGESHIRE: 2007/2008 school year

PUPIL ATTENDANCE

Government regulations require all maintained secondary schools to submit details of attendance, including % half days lost through authorised and unauthorised absence, for publication in the School Performance Tables.

Recent trends in attendance: Cambridgeshire & England



National data for 93/94 to 05/06 from DfES National Pupil Absence Tables

National data for 2006/07 & 2007/08 from DCSF Statistical First Releases SFR 05/2008 & SFR 03/2009

Secondary attendance rates: variations across Cambridgeshire

The attendance rate for Cambridgeshire Secondary schools is now 92.64%. Rates improved in 2007/08 for the second year running, after a disappointing dip in 2005/06. They have now surpassed the 2004/05 level.

District	2004/05	2005/06	2006/07	2007/08
Cambridge City	92.18	91.48	91.13	91.83
East Cambridgeshire	92.14	91.84	91.92	92.90
Fenland	91.47	91.50	90.98	91.73
Huntingdonshire	92.86	92.38	93.05	92.76
South Cambridgeshire	93.07	92.71	92.69	93.35
Cambridgeshire	92.51	92.14	92.20	92.64
NfER statistical neighbours*	92.76	92.55	92.54	93.00
East of England Region	92.43	92.28	92.29	92.82
England	92.19	92.08	92.14	92.66

SECONDARY AGE PUPILS IN CAMBRIDGESHIRE: 2007/2008 school year

Unauthorised absence: SECONDARY

At 1.79% the rate of unauthorised absence from Cambridgeshire secondary schools is slightly above the national rate; in previous years it has been slightly below.

District	2004/05	2005/06	2006/07	2007/08
Cambridge City	0.86	0.99	2.26	2.31
East Cambridgeshire	1.08	1.04	1.48	1.28
Fenland	2.11	1.83	2.65	2.53
Huntingdonshire	1.05	1.00	0.62	1.86
South Cambridgeshire	0.47	0.56	0.87	1.24
Cambridgeshire	1.04	1.02	1.36	1.79
NfER statistical neighbours*	0.89	0.89	1.20	1.24
East of England Region	1.03	1.05	1.30	1.27
England	1.23	1.22	1.50	1.47

At 5.57% the Cambridgeshire rate of authorised absence is slightly below the national rate and those for our comparator authorities.

There has been widespread improvement across Cambridgeshire this year, with rates on average one percentage point better than in 2006/07.

Authorised absence : % half days missed : recent trends

District	2004/05	2005/06	2006/07	2007/08
Cambridge City	6.96	7.53	6.60	5.86
East Cambridgeshire	6.79	7.12	6.61	5.82
Fenland	6.42	6.68	6.38	5.73
Huntingdonshire	6.10	6.61	6.33	5.37
South Cambridgeshire	6.46	6.73	6.44	5.40
Cambridgeshire	6.45	6.85	6.59	5.57
NfER Statistical	6.30	6.52	6.26	5.76
East of England Region	6.54	6.67	6.40	5.92
England	6.58	6.70	6.36	5.87

* Cambridgeshire's NfER Children's Services statistical 'nearest neighbours' are: Oxfordshire, Bath & NE Somerset, Wiltshire, Hampshire, Gloucestershire, West Berkshire, Hertfordshire, Worcestershire, Bedfordshire, West Sussex

SECONDARY AGE PUPILS IN CAMBRIDGESHIRE: 2007/2008 school year

EXCLUSIONS

Permanent exclusions

In 2007/08 there were 10 permanent exclusions from Cambridgeshire secondary schools. This is a slight increase from the 2006/07 total of 8.

7 of the permanent exclusions in 2007/08 were boys, 3 were girls.

Permanent exclusion per % school population: recent trends

	2004/05	2005/06	2006/07	2007/08
Cambridge City	0.02	0.05	0.00	0.00
East Cambridgeshire	0.00	0.02	0.05	0.00
Fenland	0.00	0.04	0.06	0.06
Huntingdonshire	0.02	0.02	0.02	0.01
South Cambridgeshire	0.03	0.00	0.01	0.07
Cambridgeshire	0.02	0.02	0.02	0.03
East of England	0.19	0.19	0.18	
England	0.24	0.24	0.22	n/a

Fixed Term exclusions

There were 2635 instances of fixed term exclusions from Cambridgeshire secondary schools in 2007/08, 223 fewer than in 2006/07 when there were 2858.

Most of the instances involved boys. In 2007/08 the gender balance was 1862 (71%) boys and 773 (29%) by girls, broadly similar to 2006/07 when 2066 (72%) instances involved boys and 792 (28%) involved girls.

The fixed term exclusion rate per hundred pupils varies across the county. It is highest in Fenland, which has shown a steady annual increase. Rates have also risen in East Cambridgeshire, after a sizeable drop last year. Elsewhere in the county rates have fallen since 2006/07, particularly in Huntingdonshire where they are now the lowest in the county

Recent trends in Fixed Term exclusion: number of instances as % pupils on roll

District	2004/05	2005/06	2006/07	2007/08
Cambridge City	12.76	13.44	9.06	8.76
East Cambridgeshire	9.31	12.14	8.56	9.36
Fenland	8.80	11.92	13.80	14.73
Huntingdonshire	4.70	5.71	7.42	5.44
South Cambridgeshire	5.71	6.16	7.04	6.15
Cambridgeshire	7.43	8.67	8.70	8.06
East of England	9.04	9.47	10.01	n/a
England	9.94	10.40	10.83	n/a

SECONDARY AGE PUPILS IN CAMBRIDGESHIRE: 2007/2008 school year

KEY STAGE 3 NATIONAL CURRICULUM ASSESSMENT

KS3 data in 2008 is unreliable due to the well publicised difficulties with the national assessment process. KS3 tests for 2009 and beyond have been abolished by the Secretary of State, as a result of these difficulties.

SECONDARY AGE PUPILS IN CAMBRIDGESHIRE: 2007/2008 school year

GCSE

We are currently in the transition period between the ending of Best Value Performance Indicators [BVPIs] and the introduction of National Indicators [NIs]. Each statutory set includes indicators for performance at GCSE but revisions and deletions have complicated the picture. Both sets of indicators chiefly focus on the qualification level of the cohort. Whereas former BVPIs defined this as 'pupils aged 15+', the new NIs use the slightly different definition of 'end of KS4'.

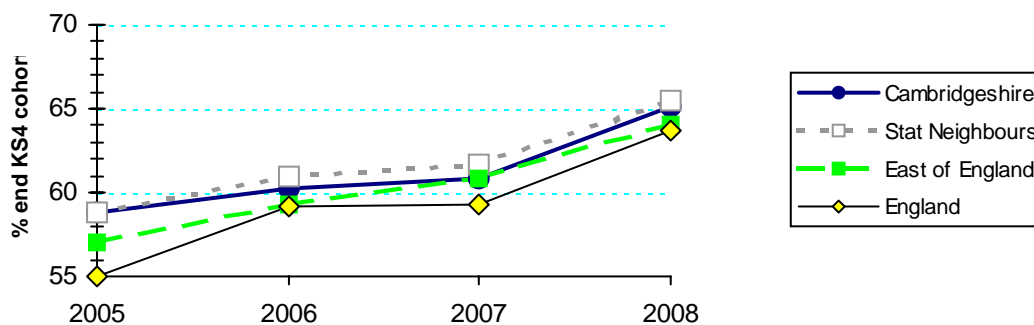
Cambridgeshire, like all Local Authorities, has a statutory duty to monitor performance in the GCSE examinations, together with targets for improvement.

GCSE: % achieving 5+ GCSEs at grades A*-C

5+ A*-C: Cambridgeshire performance remains above the national rate and slightly below that for our statistical neighbour authorities, although in line with both and showing similar trend patterns. We are now slightly above the regional rate having improved more strongly since 2007, reversing the pattern between 2006 and 2007.

Achieving 5+ A*-C GCSE and equivalent

ALL PUPILS, end of KS4 cohort

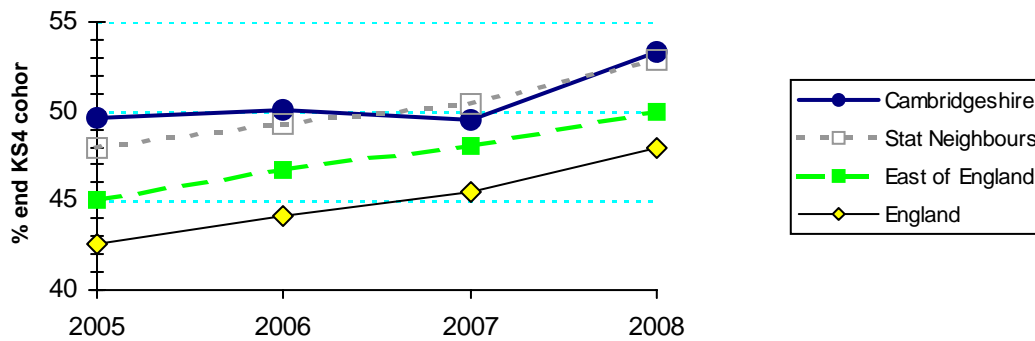


	2005	2006	2007	2008
Cambridgeshire	58.8	60.2	60.8	65.1
Statistical Neighbours	58.8	60.9	61.7	65.5
East of England	57.0	59.3	60.8	64.0
England	55.0	59.2	59.3	63.7

SECONDARY AGE PUPILS IN CAMBRIDGESHIRE: 2007/2008 school year

5+ A*-C including English and maths: Cambridgeshire performance remains above the national and regional rates and similar to that for our statistical neighbours. Our improvement rate is now slightly better than that for our statistical neighbours; following a dip in performance in 2007 we have now again overtaken them.

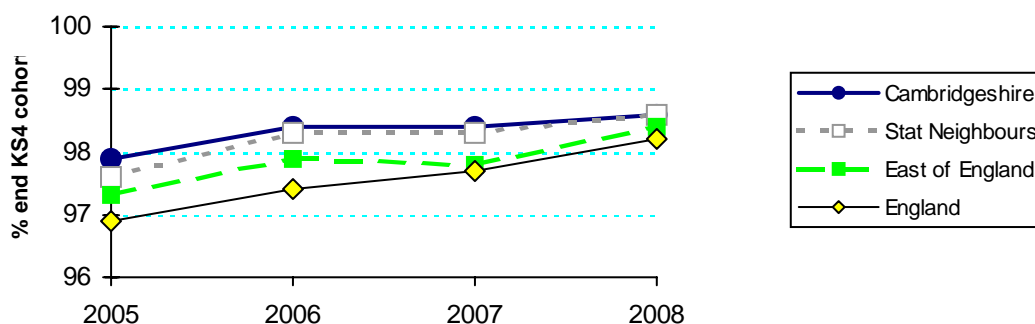
Achieving 5+ A*-C GCSE and equivalent including English & maths ALL PUPILS, end of KS4 cohort



	2005	2006	2007	2008
Cambridgeshire	49.6	50.1	49.5	53.3
Statistical Neighbours	47.9	49.3	50.4	52.9
East of England	45.0	46.7	48.1	50.0
England	42.6	44.1	45.5	47.9

Any GCSE passes (1+ A*-G): Cambridgeshire performance is slightly above but in line with national and regional rates, and very similar to that for our statistical neighbour authorities. The gap between county and national rates is closing slightly because the national rates are improving more strongly.

Achieving any GCSE and equivalent passes (1+ A*-G) ALL PUPILS, end of KS4 cohort



	2005	2006	2007	2008
Cambridgeshire	97.9	98.4	98.4	98.6
Statistical Neighbours	97.6	98.3	98.3	98.6
East of England	97.3	97.9	97.8	98.4
England	96.9	97.4	97.7	98.2

SECONDARY AGE PUPILS IN CAMBRIDGESHIRE: 2007/2008 school year

STUDENT DESTINATIONS AT 16+

Destinations of Y11 Leavers from Cambridgeshire LA Schools

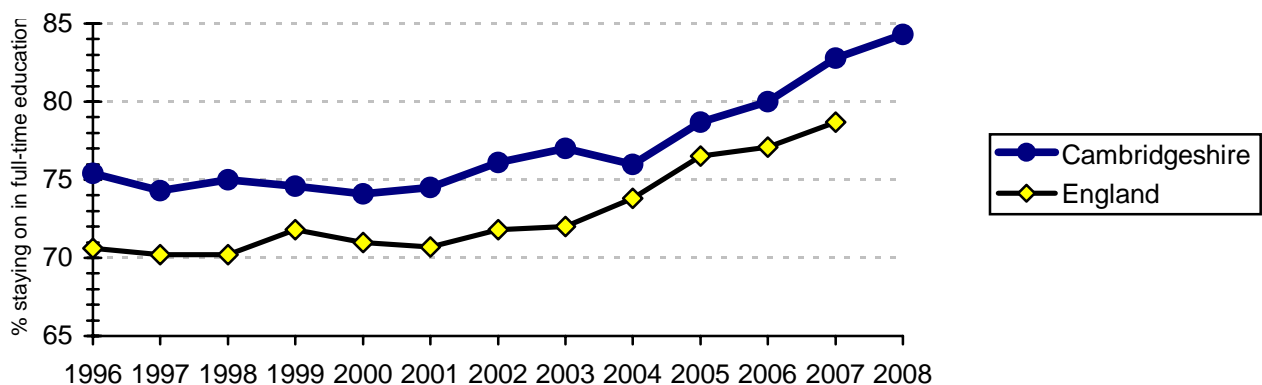
The chart shows the destinations of young people leaving secondary, special schools or PRUs at age 16 in Summer 2008. 94% were known to be continuing in education, employment or training.

Destinations: Summer 2008	% Pupils
Stayed on in full-time education in Cambridgeshire (<i>includes schools, FE colleges and 6th form colleges</i>)	84.3
Entered employment and training:	6.0
Of which: Employed with training	4.9
Employed without training	1.1
Full-time training (non-employed)	1.8
Voluntary & part-time activities	0.6
Known to be in Education, Employment or Training (EET)	92.7
Actively seeking education, employment or training	3.1
Not available for work	0.5
Known not to be in Education, Employment or Training (NEET)	3.6
Not known	3.7

Data Source: Connexions

% 16+ age group staying on in full-time education: recent trends

The proportion of young people in Cambridgeshire who stay on in full-time education at age 16+ is above the national average.



Destination patterns – particularly the proportion of young people staying on in full-time education - varies across Cambridgeshire. The rates are highest in South Cambridgeshire and lowest in East Cambs.

SECONDARY AGE PUPILS IN CAMBRIDGESHIRE: 2007/2008 school year

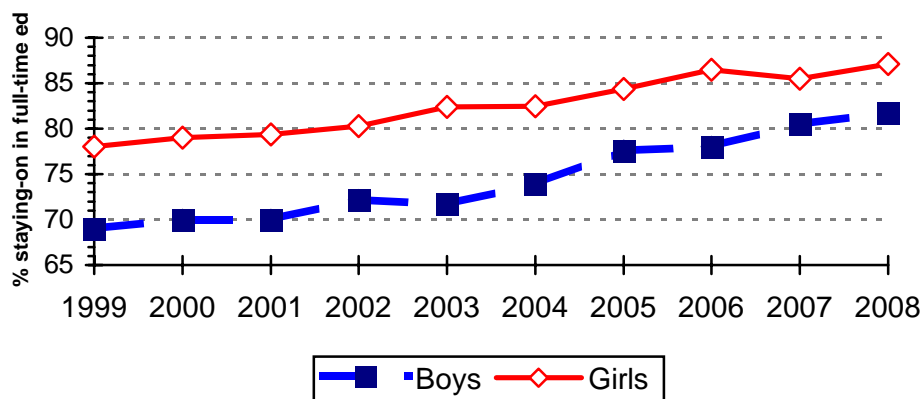
The percentage of students in Cambridgeshire Secondary Schools staying-on in full-time education at 16+

	2002/03	2003/04	2004/05	2005/06	2006/07	2007/08
Cambridge City	79.8	80.5	83.8	85.0	87.3	84.2
East Cambridgeshire	76.2	75.7	79.1	82.0	82.7	87.8
Fenland	68.5	68.9	73.5	75.3	75.3	83.3
Huntingdonshire	75.0	80.1	81.7	80.4	82.3	85.0
South Cambridgeshire	83.8	81.5	84.3	88.9	89.5	89.5
Cambridgeshire	77.0	78.2	81.0	82.7	83.8	81.5

Data Source: Connexions

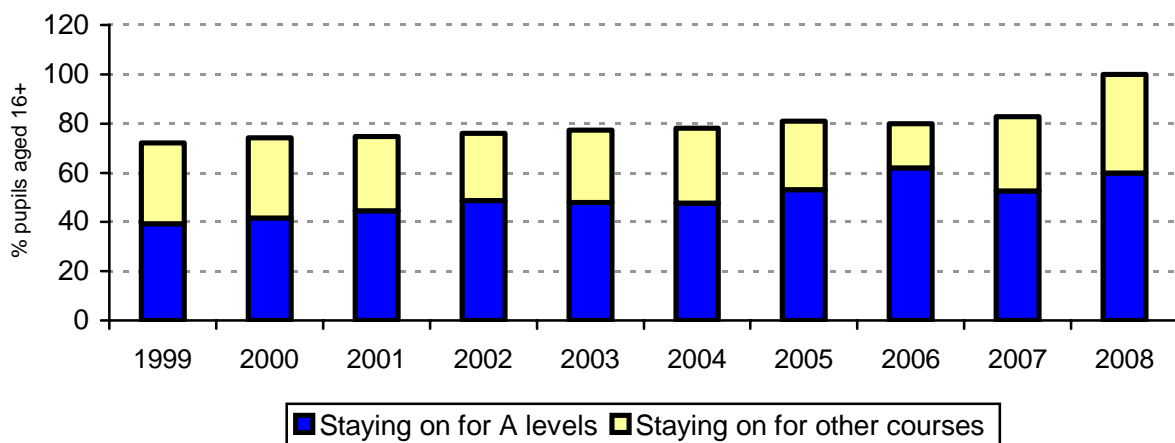
There is a difference in the stay-on rates for boys and girls. More girls than boys stay on in full-time education, 87.2% girls compared with 81.7% boys

The percentage of boys & girls from Cambridgeshire Secondary Schools staying-on in full-time education at 16+



Data Source: Connexions

The majority of Post-16 enrolments on full-time education courses are for A / AS examinations.



SECONDARY AGE PUPILS IN CAMBRIDGESHIRE: 2007/2008 school year

Enrolments on full-time Post-16 courses by Summer 2008 Leavers

	% boys	% girls	% all pupils
A, AS or A2 courses	45.0	53.2	49.1
NVQ Level 3 or equivalent	9.4	10.7	10.0
NVQ Level 2 or equivalent	12.8	12.3	12.5
NVQ Level 1 or equivalent	9.5	7.3	7.0
GCSE courses	2.6	2.2	2.4
Other full-time courses	2.4	1.4	1.9
Stayed on in full-time education (<i>includes schools, FE colleges and 6th form colleges</i>)	81.8	87.1	84.3

Data Source: Connexions

SECONDARY AGE PUPILS IN CAMBRIDGESHIRE: 2007/2008 school year

POST-16 QUALIFICATIONS

There are eleven Cambridgeshire schools with Sixth Forms. The Sixth Form Colleges and FE Colleges to which pupils transfer at 16 left LA control in 1993.

ADVANCED LEVEL / ADVANCED SUBSIDIARY LEVEL EXAMINATIONS

Sixth Form students are encouraged to follow a wide range of subjects in their first year of post-16 study, with students typically expected to study four Advanced Subsidiaries (AS). Most students will then progress three AS subjects on to full A-levels in their second year of post-16 study.

Changes to the A / AS structure and point score mean that it is not possible to show trends before 2002. The scoring system was revised in 2006 to include vocational achievements, further complicating trends.

Average point scores of 16,17-18 year old students in Cambridgeshire: recent trends (Cumulative attainment over the last 4 academic years)

	Average Point score of 16-18 year old students entered for GCE/VCE A/AS & equivalent			Average point score per entry		
	Boys	Girls	Total	Boys	Girls	Total
2008	762.1	820.9	793.9	205.0	217.5	211.8
2007	745.0	806.0	778.1	203.7	214.2	209.5
2006	725.3	779.9	754.0	202.8	213.1	208.3
2005	271.6	316.2	295.5	76.0	85.0	80.9

Data Source: DCSF SFR29/2008

INTERMEDIATE VOCATIONAL QUALIFICATIONS

Intermediate Vocational Qualifications are broadly equivalent to four GCSEs at grades A*-C and are taken by students after one year of post-16 study. The percentage of students achieving the qualification in Cambridgeshire is slightly above the national average.

INTERNATIONAL BACCALAUREATE

The International Baccalaureate is a broad-based qualification of A-level standard. The percentage of Cambridgeshire students achieving the qualification is consistently above the national average.