

CHILDREN AND YOUNG PEOPLE'S SERVICES & ADULT SOCIAL CARE MANAGEMENT TEAM

**Executive Director:
Children and Young People's Services
& Adult Social Care**

Adrian Loades
Tel: 01223 727993

**Service Director:
Children's Enhanced and
Preventative Services**

Charlotte Black
Tel: 01223 727990

- Access Services
- Youth Support
- Locality Teams and Partnerships
- Support for Learning
- Children's Centres

**Service Director:
Children's Social Care**

Niki Clemo
Tel: 01223 727989

- Area Social Care Teams
- Children's Social Care Teams
- Safeguarding and Standards
- Social Care Strategy

**Service Director:
Learning**

Gayle Gorman
Tel: 01223 727988

- Early Years and Childcare
- Standards and Effectiveness 3-11
- Standards and Effectiveness 11-19
- Education Support Services
- Professional Development Services

**Service Director:
Strategy and Commissioning**

Hannah Woodhouse
Tel: 01223 714568

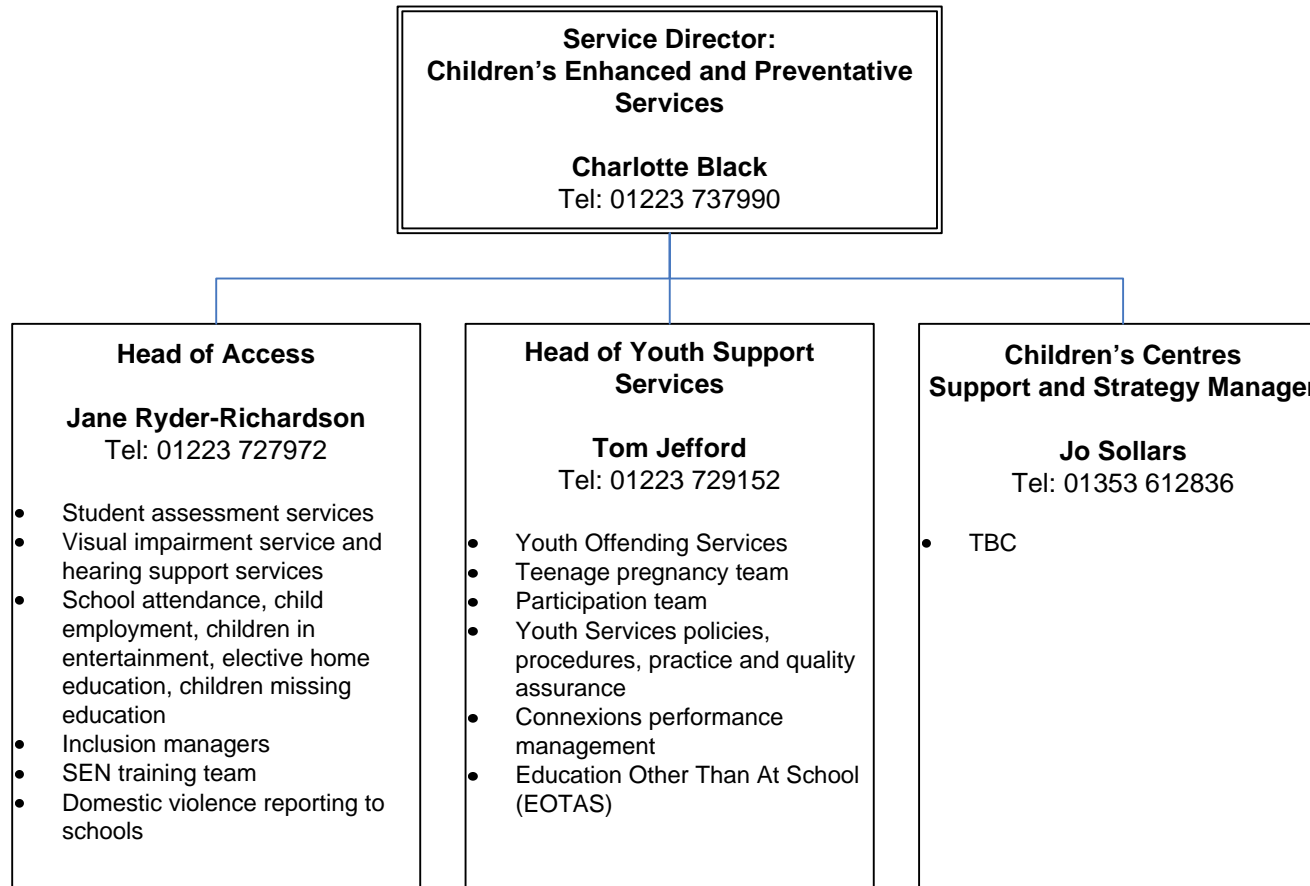
- Infrastructure
- Building Schools for the Future
- Planning and Performance
- OneVision Data Information and Systems Support
- Catering and Cleaning Services
- Groomfields Ground Maintenance
- Commissioning Enhanced Services
- 16-19 Commissioning Team

**Service Director:
Adult Social Care**

Claire Bruin
Tel: 01223 715665

- Commissioning (Disabilities and Carers)
- Commissioning (Mental Health and Supporting People)
- Commissioning (Older People)
- Procurement (Social Care and Supporting People)
- Regulation, Performance and Business Support
- Quality and Transformation
- Learning Disabilities
- Countywide Services
- Provider Services

CHILDREN'S ENHANCED AND PREVENTATIVE SERVICES SERVICE DIRECTORATE (Page 1 of 2)



CHILDREN'S ENHANCED AND PREVENTATIVE SERVICES SERVICE DIRECTORATE (Page 2 of 2)

**Service Director:
Children's Enhanced and Preventative
Services**

Charlotte Black
Tel: 01223 727990

**Area Manager
Support for Learning**

Paula Granger
Tel: 01480 373788

- Specialist teaching teams (providing quality special educational needs support to promote pupil progress and inclusion in learning and behaviour)
- Educational psychologists
- Support for Early Years Teams
- Connexions Personal Advisers and Transition Co-ordinators (providing confidential guidance and support to young people with additional needs to help them make the most of their education and plan for the future)

**Area Manager Locality and
Partnerships
(East Cambs and Fenland)**

Lorraine Lofting
Tel: 01223 475901

Responsibility for locality teams in area and delivery and development of prevention focused services and partnership working.

Locality Teams provide joined-up responsive services for children and families living in their locality.

**Area Manager Locality and
Partnerships
(Huntingdonshire)**

Sarah Tabbit
Tel: 01480 373813

Responsibility for locality teams in area and delivery and development of prevention focused services and partnership working.

Locality Teams provide joined-up responsive services for children and families living in their locality.

**Area Manager Locality and
Partnerships
(South Cambs and Cambridge
City)**

Sarah Ferguson
Tel: 01480 712588

Responsibility for locality teams in area and delivery and development of prevention focused services and partnership working.

Locality Teams provide joined-up responsive services for children and families living in their locality.

CHILDREN'S SOCIAL CARE SERVICE DIRECTORATE

**Service Director:
Children's Social Care**

Niki Clemo
Tel: 01223 727989

Interim Head of Disabled Children's Social Care

Risthardh Hare
Tel: 01223 699674

- TBC

Head of Children's Social Work

Elaine Petch
Tel: 01223 729149

- Fostering and adoption service
- Residential homes for children who are looked after by the local authority, short stay residential care for young people with disabilities, the 16+ service, services for unaccompanied asylum seeking children and the supervised contact team
- Aiming High (implementing a new national initiative which includes a "core offer" that all families with disabled children can expect to get from local services)
- Emergency Duty Team

Head of Safeguarding and Standards

Peter Wilson
Tel: 01223 703583

- Safeguarding across Children and Young People's Services
- Leading safeguarding work within the Local Safeguarding Children Board (LSCB) and partner organisations
- Education Child Protection Service

Head of Children's Social Care Access

Tessa Bailey
Tel: 01354 750164

- TBC

Head of Looked After Children

Tracy Collins
Tel: 01223 729151

- TBC

Head of Children in Need

Paul Evans
Tel: 01223 507197

- TBC

LEARNING SERVICE DIRECTORATE

**Service Director:
Learning**

Gayle Gorman
Tel: 01223 727988

Head of Early Years

Gill Harrison
Tel: 01223 725542

- Strategic leadership of early years and childcare services (0-14+)
- Raising the quality of early years and childcare (0-14+) provision and quality assurance of Children's Centres

Head of Network and Partnerships

Keith Grimwade
Tel: 01480 375879

- Cambridgeshire Advisory Services
- Education ICT service
- Connexions Training and Development team
- Youth Work training and development
- Personal, Social and Health Education service (PSHE)
- International education
- Swimming service
- Outdoor Education Advisory
- Cambridgeshire Outdoors, which comprises:
 - Environmental Education Service (CEES)
 - Grafham Water Centre
 - Burwell House Study and Conference Centre
- Cambridgeshire Music
- Governor Services

Head of Service - Primary

Sue Wilson
Tel: 01223 706304

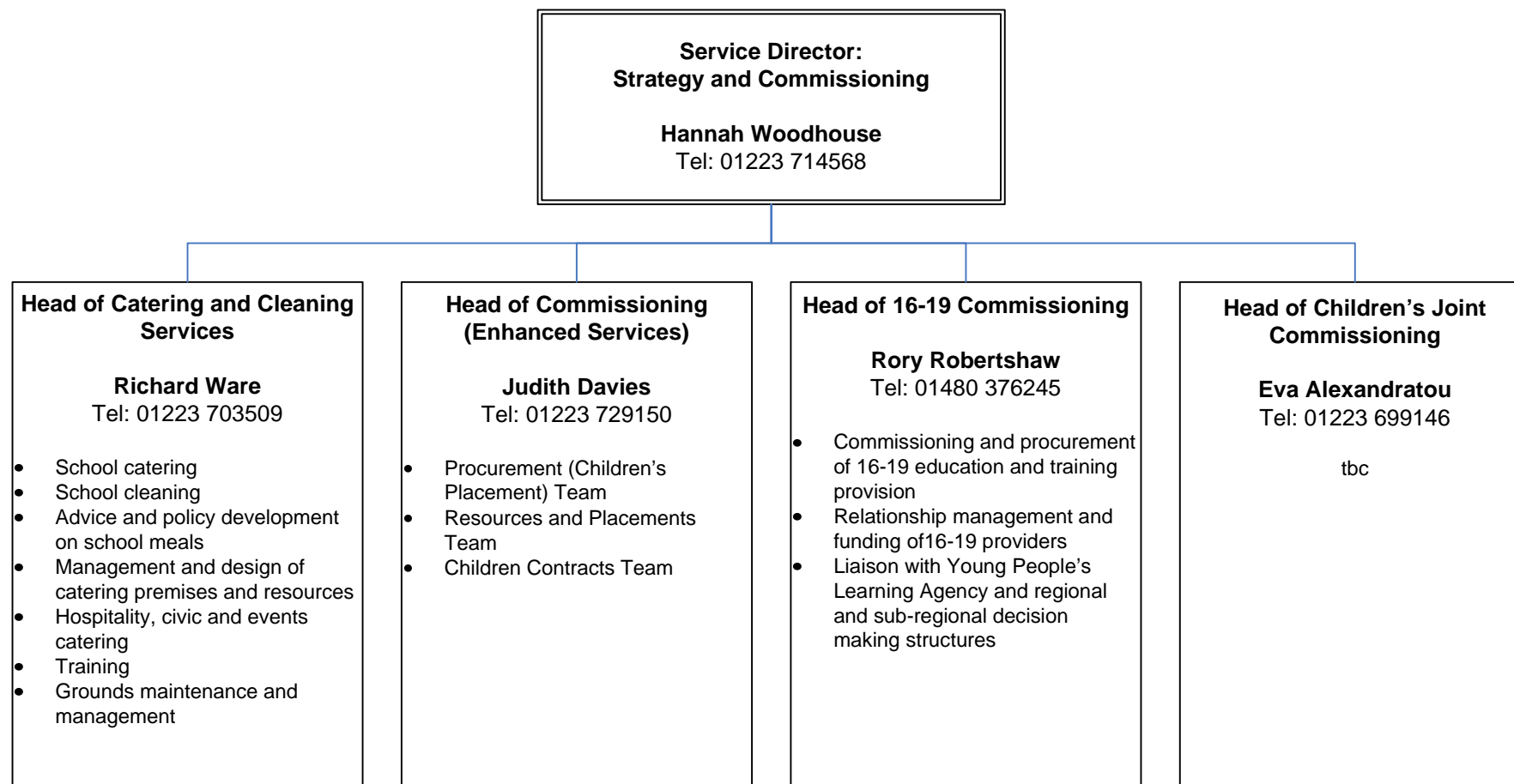
- Leading the team of inspectors and officers responsible for monitoring and supporting the quality of provision in primary schools
- Securing appropriate support for managers and leaders responsible for that provision
- Leading on intervention in primary schools causing concern
- Manage the Primary Strategy

Head of Service – Secondary and Special

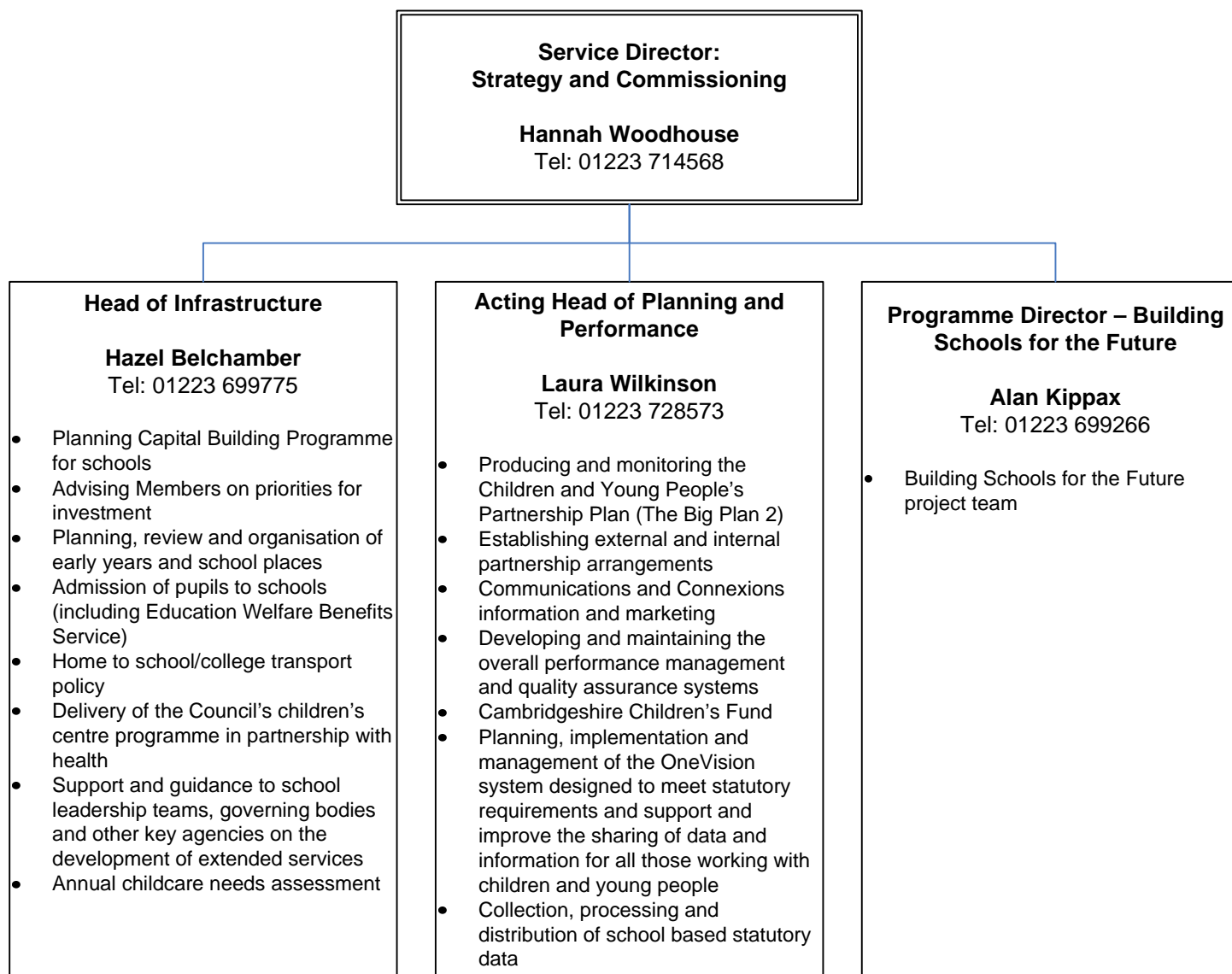
Guy Dickens
Tel: 01223 706301

- Leading the team of inspectors, officers and School Improvement Partners responsible for monitoring and supporting the quality of provisions in secondary/special schools and PRUs
- Securing appropriate support for managers and leaders responsible for that provision
- Managing the Secondary National Strategy and 14-19 developments
- Leading on interventions in secondary/special schools and PRUs causing concern
- Leading on quality assurance arrangements for 14-19 partnerships and behaviour and attendance partnerships
- Connexions Careers Education and Curriculum Development Guidance
- Connexions Individual Learning Plans
- Connexions Work Related Learning and Education

STRATEGY AND COMMISSIONING SERVICE DIRECTORATE (Page 1 of 2)



STRATEGY AND COMMISSIONING SERVICE DIRECTORATE (Page 2 of 2)



ADULT SOCIAL CARE OPERATIONS SERVICE DIRECTORATE

**Service Director:
Adult Social Care**

Claire Bruin
Tel: 01223 715665

**Physical Disability and Sensory
Services Manager**

Linda Mynott
Tel: 01480 373252

- Transitions
- Physical disability
- Sensory services
- HIV/AIDS services to the county

**Head of Operations
(Learning Disability
Partnership)**

Tracy Gurney
Tel: 01223 714692

- Management of Section 75 (agreement with the NHS)
- Operational responsibilities for the integrated team (health and social care)
- Finance and performance
- Budget recovery plan
- Contract negotiations with external providers
- Contact Centre duty team

Head of Provider Services

Derrick Biggs
Tel: 01354 750070

- Countywide day services
- Respite
- Supporting living
- Adult placement
- In-house residential centres

ADULT SOCIAL CARE STRATEGY AND COMMISSIONING SERVICE DIRECTORATE

**Service Director:
Adult Social Care**

Claire Bruin
Tel: 01223 715665

Interim Head of Commissioning (Disabilities and Carers)

Phillip Sharpe
Tel: 01223 715939

- Learning and physical disabilities
- Sensory services
- Integrated Community Equipment Services (ICES) and assistive technology
- Carers strategy and support services (in conjunction with partners)
- Community meals service

Interim Head of Commissioning (Mental Health and Supporting People)

Robert Nicholls
Tel: 01223 715939

- Joint assessment of need with key partners
- Social work and social care packages in partnership with NHS
- Preventative services through the voluntary sector
- Delivery of personalisation and service improvement
- Developing and managing the market

Head of Commissioning (Older People) Joint post with NHS

Richard O'Driscoll
Tel: 01223 884220

- Assessment of need and eligibility for social care
- Personal care
- Day care
- Residential home and nursing home placements
- Specialist support
- Short breaks and respite care
- Direct Payments
- Occupational Therapy

Head of Procurement (Adult Social Care and Supporting People)

Ken Fairbairn
Tel: 01223 717883

- Managing contract processes, tendering and performance against standards for care homes
- Funding for permanent bed places
- Respite care bed booking system
- CRIP 1 and CRIP 2 plus development of CRIP 3
- Supporting People

Head of Regulation, Performance and Business Support

Simon Willson
Tel: 01223 715905

- Efficiency
- Performance management
- Local Area Agreements
- Planning strategy and service plans
- Policies, procedure and operational instructions
- Welfare benefits
- Inspections
- Communications

Head of Quality and Transformation

Mike Hay
Tel: 01223 715342

- Transformation of social care across all client groups
- Advice and guidance on key practice areas
- Safeguarding of adults, including strategy
- Care management and assessment
- Mental capacity, Court of Protection and Deprivation of Liberty duties
- Customer care
- Workforce development