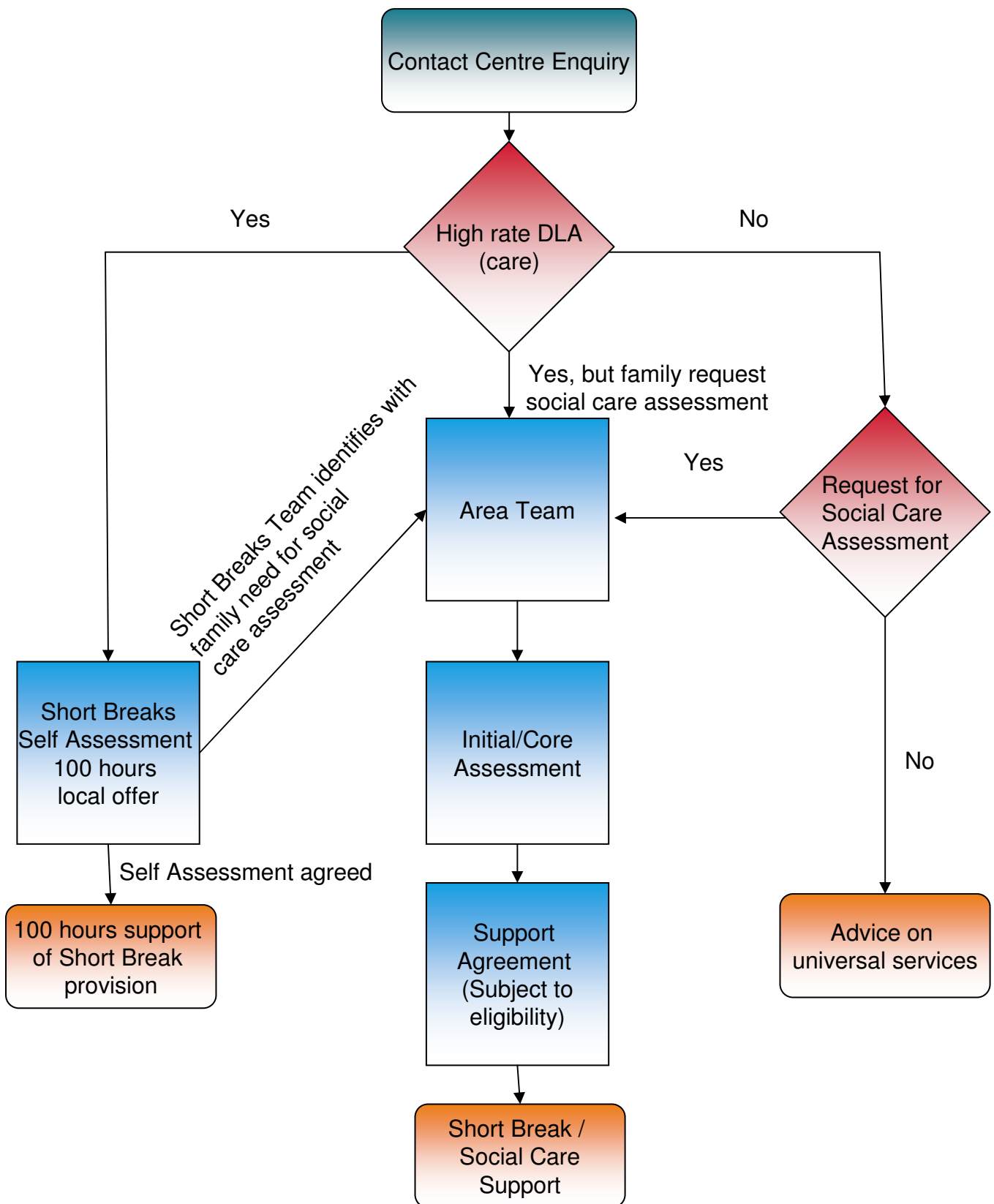


Short Breaks and Social Care Support: Disabled Children and Young People



Short Break provision

CamPlay Holiday Clubs

www.cambridgeshire.gov.uk/childrenyoungpeople/disabledchildren/community/playschemes

CamPlay Saturday Clubs

www.cambridgeshire.gov.uk/childrenyoungpeople/disabledchildren/community/default/

Community Support Services

www.cambridgeshire.gov.uk/childrenyoungpeople/disabledchildren/community

Direct Payments

www.cambridgeshire.gov.uk/childrenyoungpeople/disabledchildren/direct

Other resources (social care only)

Link

www.cambridgeshire.gov.uk/childrenyoungpeople/socialcare/fostering/breaks/cffoslink.htm

Residential

www.cambridgeshire.gov.uk/childrenyoungpeople/disabledchildren/shortbreaks/shortbreaksreview.htm

Universal services

www.cambridgeshire.net