

# SECONDARY AGE PUPILS IN CAMBRIDGESHIRE: 2008/2009 school year

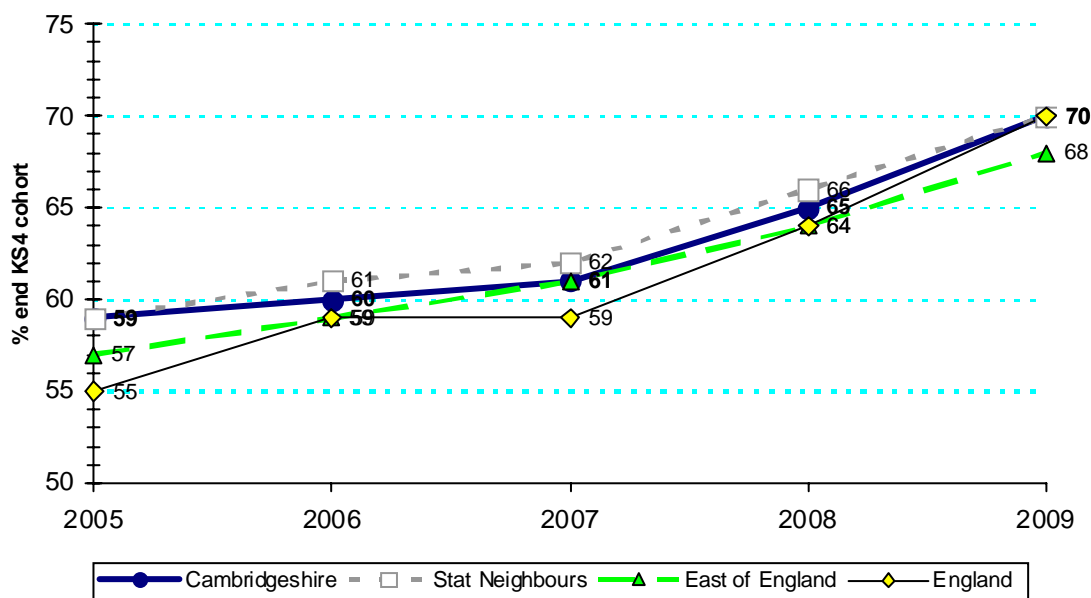
## GCSE

Cambridgeshire, like all Local Authorities, has a statutory duty to monitor performance in the GCSE examinations, together with targets for improvement. The introduction of National Indicators (NIs) in 2008 moved the focus to the achievements of pupils at the end of Key Stage 4, rather than the achievements of pupils at the age of 15, as previously monitored by Best Value Performance Indicators.

### **GCSE: % achieving 5+ GCSEs at grades A\*-C**

**5+ A\*-C:** Cambridgeshire performance is in line with the national average and that of our statistical neighbours, it is two percentage points above the average for the East of England.

#### **Achieving 5+ A\*-C GCSE and equivalent ALL PUPILS, end of KS4 cohort**

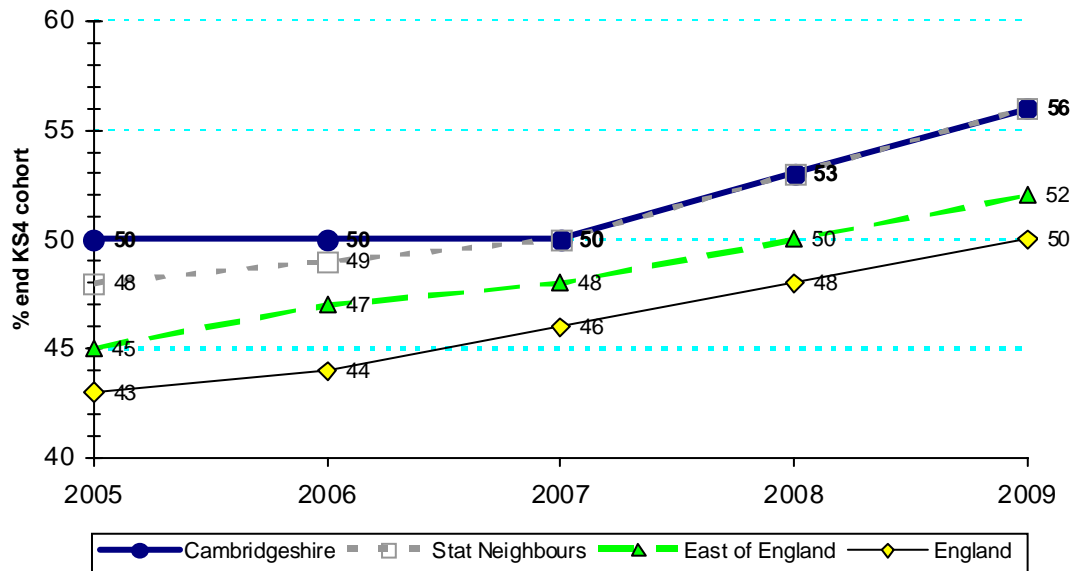


	2005	2006	2007	2008	2009
Cambridgeshire	59	60	61	65	70
Statistical Neighbours	59	61	62	66	70
East of England	57	59	61	64	68
England	55	59	59	64	70

# SECONDARY AGE PUPILS IN CAMBRIDGESHIRE: 2008/2009 school year

5+ A\*-C including English and mathematics: Cambridgeshire performance remains above the national and regional rates and in line with that of our statistical neighbours.

## Achieving 5+ A\*-C GCSE and equivalent including English & mathematics ALL PUPILS, end of KS4 cohort



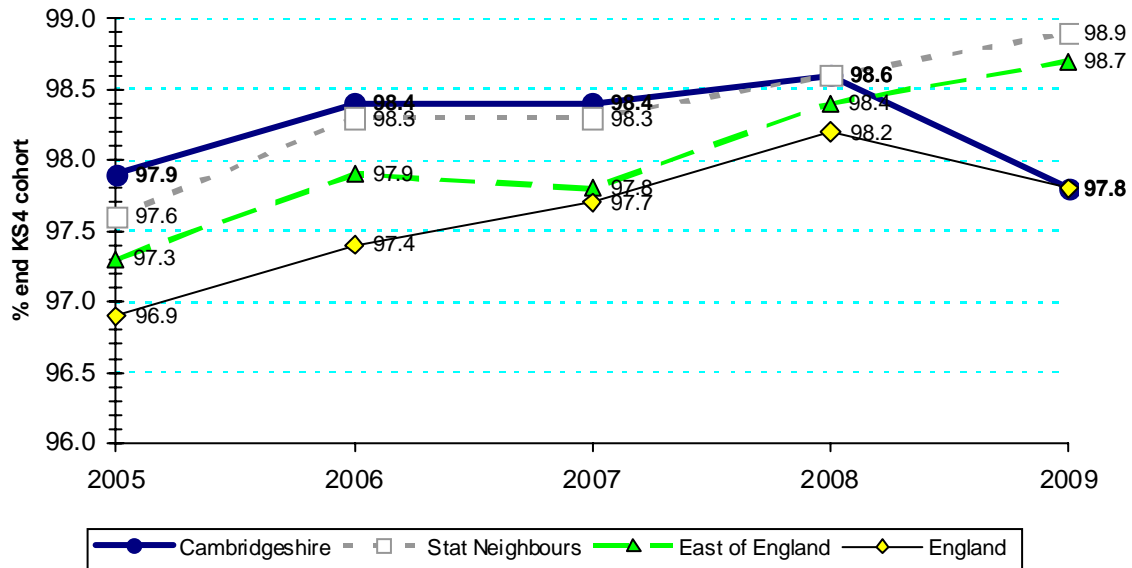
	2005	2006	2007	2008	2009
Cambridgeshire	50	50	50	53	56
Statistical Neighbours	48	49	50	53	56
East of England	45	47	48	50	52
England	43	44	46	48	50

# SECONDARY AGE PUPILS IN CAMBRIDGESHIRE: 2008/2009 school year

Any GCSE passes (1+ A\*-G): Cambridgeshire performance is in line with national rates but slightly below the averages for the East of England and our statistical neighbours.

## Achieving any GCSE and equivalent passes (1+ A\*-G)

ALL PUPILS, end of KS4 cohort



	2005	2006	2007	2008	2009
Cambridgeshire	97.9	98.4	98.4	98.6	97.8
Statistical Neighbours	97.6	98.3	98.3	98.6	98.9
East of England	97.3	97.9	97.8	98.4	98.7
England	96.9	97.4	97.7	98.2	97.8